

\$255,000 - 501, 19 Terrace View Ne, Medicine Hat

MLS® #A2265321

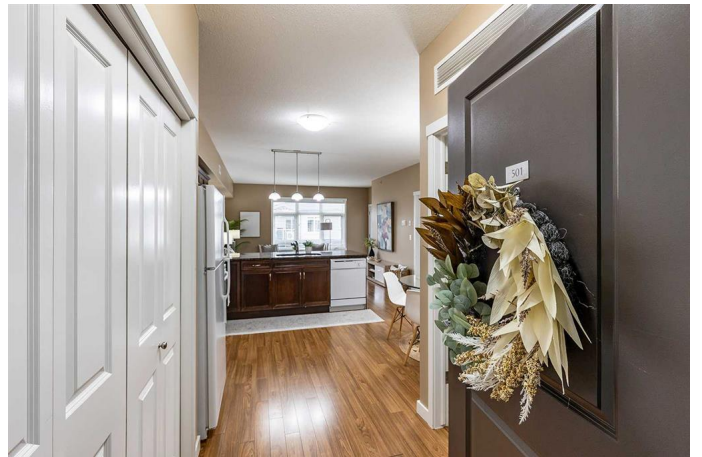
\$255,000

2 Bedroom, 1.00 Bathroom, 795 sqft

Residential on 0.00 Acres

Terrace, Medicine Hat, Alberta

Top-Floor Corner Condo with River Valley Views from Balcony! Welcome to this bright and inviting two-bedroom, one-bath condo perfectly situated in one of Terrace's most desirable neighbourhoods. Enjoy peaceful living and beautiful views from your top-floor corner unit - with no one above you and no shared bedroom walls! Step inside to discover a spacious open concept layout ideal for relaxing or entertaining. The well-designed kitchen offers abundant cabinetry and counter space, a convenient island, granite countertops, tile backsplash, and a full appliance package. The dining area provides plenty of room for everyday meals or hosting friends. The living room is flooded with natural light from large windows and enjoys direct access onto the covered balcony - the perfect spot to unwind and take in the serene views of the river valley. The primary bedroom is a bright retreat with window on two sides, while the second bedroom is equally versatile - perfect for a roommate, guest space, child's room, or home office. A four-piece bathroom is conveniently located between the bedrooms, and in-suite laundry adds everyday ease. Extras include a heated underground parking stall and secure storage locker, ensuring your vehicle and belongings are safe and protected year-round. Condo fees conveniently include all utilities, pets are welcome with some restrictions, and there are no age restrictions. There's even an option to purchase a second titled exterior parking stall - ask your Realtor



for details. With immediate possession available, all that's left to do is move in and enjoy the low-maintenance lifestyle you've been looking for - complete with stunning views and a prime location!

Built in 2007

Essential Information

MLS® #	A2265321
Price	\$255,000
Bedrooms	2
Bathrooms	1.00
Full Baths	1
Square Footage	795
Acres	0.00
Year Built	2007
Type	Residential
Sub-Type	Apartment
Style	Single Level Unit
Status	Active

Community Information

Address	501, 19 Terrace View Ne
Subdivision	Terrace
City	Medicine Hat
County	Medicine Hat
Province	Alberta
Postal Code	T1C0E8

Amenities

Amenities	Elevator(s), Other, Parking, Secured Parking, Snow Removal, Storage, Trash
Parking Spaces	1
Parking	Titled, Underground, Enclosed, See Remarks, Secured

Interior

Interior Features	Granite Counters, Kitchen Island, Open Floorplan
Appliances	Central Air Conditioner, Dishwasher, Garage Control(s), Microwave

Hood Fan, Refrigerator, Stove(s), Washer/Dryer Stacked, Window Coverings

Heating Boiler
Cooling Central Air
of Stories 5

Exterior

Exterior Features Balcony
Construction Stucco

Additional Information

Date Listed October 18th, 2025
Days on Market 2
Zoning R-MD

Listing Details

Listing Office REAL BROKER

Data is supplied by Pillar 9â„¸ MLSÂ® System. Pillar 9â„¸ is the owner of the copyright in its MLSÂ® System. Data is deemed reliable but is not guaranteed accurate by Pillar 9â„¸. The trademarks MLSÂ®, Multiple Listing ServiceÂ® and the associated logos are owned by The Canadian Real Estate Association (CREA) and identify the quality of services provided by real estate professionals who are members of CREA. Used under license.