

\$995,000 - 107142 Range Road 135, Rural Mackenzie County

MLS® #A2263920

\$995,000

6 Bedroom, 3.00 Bathroom, 1,665 sqft
Residential on 80.50 Acres

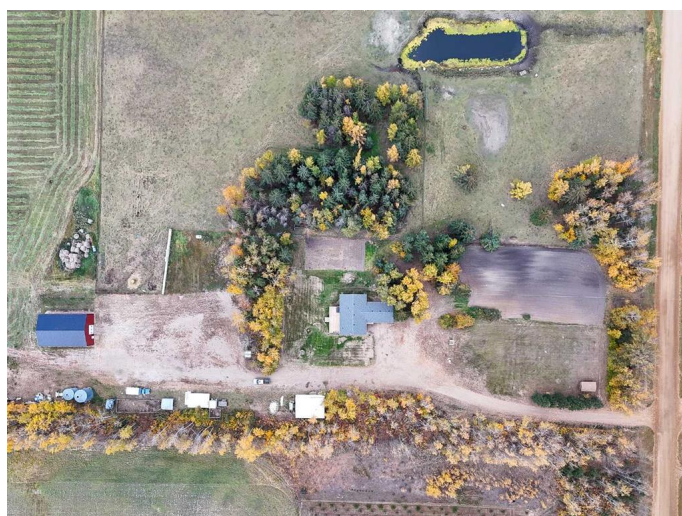
NONE, Rural Mackenzie County, Alberta

This impressive 80-acre property offers endless possibilities! The 1,665 sq. ft. home features 6 bedrooms and 3 bathrooms, with extensive renovations completed within the past year. Enjoy both an attached garage and a detached garage, along with a spacious cold storage shop—perfect for equipment, vehicles, or running a home-based business. The land includes some fencing, a large garden plot, and ample space to start farming or expand your operation. Relax on the large deck and take in the peaceful surroundings. Conveniently located near a private school, this property combines rural living with comfort and practicality. There are too many features to list—come see it for yourself!

Built in 1984

Essential Information

MLS® #	A2263920
Price	\$995,000
Bedrooms	6
Bathrooms	3.00
Full Baths	3
Square Footage	1,665
Acres	80.50
Year Built	1984
Type	Residential
Sub-Type	Detached



Style	Acreage with Residence, Bungalow
Status	Active

Community Information

Address	107142 Range Road 135
Subdivision	NONE
City	Rural Mackenzie County
County	Mackenzie County
Province	Alberta
Postal Code	T0H 2H0

Amenities

Parking	Double Garage Attached, Double Garage Detached, Parkade
# of Garages	4

Interior

Interior Features	Laminate Counters, No Smoking Home, Open Floorplan
Appliances	Dishwasher, Refrigerator, Stove(s), Washer/Dryer
Heating	Central
Cooling	None
Has Basement	Yes
Basement	Finished, Full

Exterior

Exterior Features	Fire Pit, Garden, Private Entrance, Private Yard
Lot Description	Back Yard, Garden, Landscaped, Lawn, Level, Private
Roof	Asphalt Shingle
Construction	Vinyl Siding
Foundation	Wood

Additional Information

Date Listed	October 10th, 2025
Days on Market	1
Zoning	A

Listing Details

Listing Office	Grassroots Realty Group Ltd.
----------------	------------------------------

Data is supplied by Pillar 9â„¢ MLSÂ® System. Pillar 9â„¢ is the owner of the copyright in its MLSÂ® System. Data is deemed reliable but is not guaranteed accurate by Pillar 9â„¢. The trademarks MLSÂ®, Multiple Listing ServiceÂ® and the associated logos are owned by The Canadian Real Estate Association (CREA) and identify the quality of services

provided by real estate professionals who are members of CREA. Used under license.