

\$339,900 - 529 Sabrina Road Sw, Calgary

MLS® #A2263652

\$339,900

2 Bedroom, 1.00 Bathroom, 509 sqft

Residential on 0.00 Acres

Southwood, Calgary, Alberta

Move-in ready & affordable! This semi-detached 2 bdrm half- duplex is full of charm & updates - with NO CONDO FEES! Main floor features open concept living with a spacious living & dining area, large windows for plenty of natural light with a functional kitchen. The bright basement features new flooring & windows, fresh paint, and a spacious laundry/storage area. This home is just steps from the LRT, shopping, schools. Perfect for the first-time buyer, downsizers or investors. Both sides are for sale!

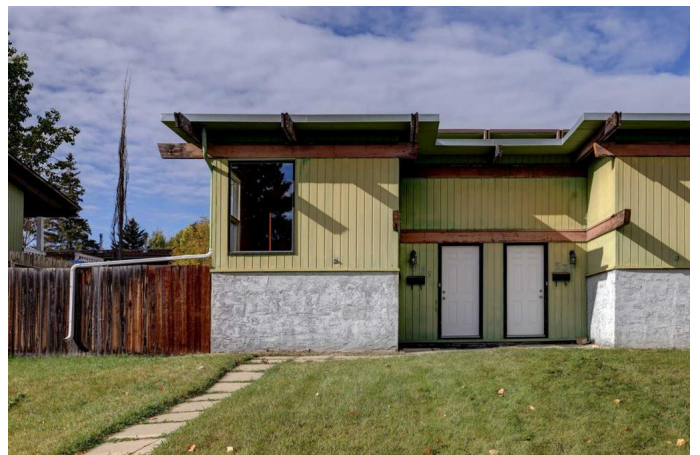
Built in 1973

Essential Information

MLS® #	A2263652
Price	\$339,900
Bedrooms	2
Bathrooms	1.00
Full Baths	1
Square Footage	509
Acres	0.00
Year Built	1973
Type	Residential
Sub-Type	Semi Detached
Style	Side by Side, Bi-Level
Status	Active

Community Information

Address 529 Sabrina Road Sw



Subdivision	Southwood
City	Calgary
County	Calgary
Province	Alberta
Postal Code	T2T 4M9

Amenities

Amenities	None
Parking	None, On Street

Interior

Interior Features	Storage
Appliances	Electric Stove, Refrigerator, Washer/Dryer
Heating	Forced Air, Natural Gas
Cooling	None
Has Basement	Yes
Basement	Finished, Full

Exterior

Exterior Features	None
Lot Description	Back Yard, Rectangular Lot
Roof	Tar/Gravel
Construction	Wood Frame
Foundation	Poured Concrete

Additional Information

Date Listed	October 11th, 2025
Zoning	M-CG d44

Listing Details

Listing Office	Real Estate Professionals Inc.
----------------	--------------------------------

Data is supplied by Pillar 9â„¢ MLS® System. Pillar 9â„¢ is the owner of the copyright in its MLS® System. Data is deemed reliable but is not guaranteed accurate by Pillar 9â„¢. The trademarks MLS®, Multiple Listing Service® and the associated logos are owned by The Canadian Real Estate Association (CREA) and identify the quality of services provided by real estate professionals who are members of CREA. Used under license.