

\$1,520,000 - 192 St And 450 Ave W, Rural Foothills County

MLS® #A2263618

\$1,520,000

0 Bedroom, 0.00 Bathroom,
Land on 160.00 Acres

NONE, Rural Foothills County, Alberta

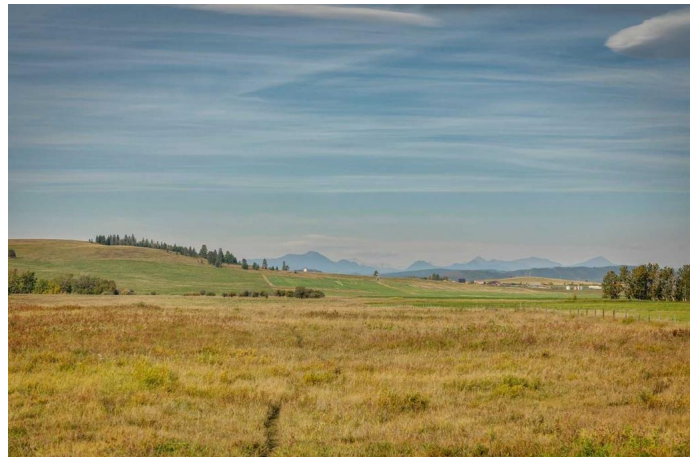
Terrific quarter section with very good pasture land and approximately 40 acres of hayland. Many excellent building sites back in away from the road with great mountain views to the west. Trees and bush on the southern portion to enhance these building sites. The access to this land is in the NE corner of the quarter. Fully fenced and crossed fenced. Scenic but functional corrals in the SW corner. Quick possession. Can be purchased with the NE quarter. MLS #A2263582

Essential Information

MLS® #	A2263618
Price	\$1,520,000
Bathrooms	0.00
Acres	160.00
Type	Land
Sub-Type	Residential Land
Status	Active

Community Information

Address	192 St And 450 Ave W
Subdivision	NONE
City	Rural Foothills County
County	Foothills County
Province	Alberta
Postal Code	T1S 1V3



Additional Information

Date Listed October 9th, 2025
Zoning A

Listing Details

Listing Office RE/MAX First

Data is supplied by Pillar 9â„¢ MLS® System. Pillar 9â„¢ is the owner of the copyright in its MLS® System. Data is deemed reliable but is not guaranteed accurate by Pillar 9â„¢. The trademarks MLS®, Multiple Listing Service® and the associated logos are owned by The Canadian Real Estate Association (CREA) and identify the quality of services provided by real estate professionals who are members of CREA. Used under license.