

# \$469,000 - 64 Ermineview Way N, Lethbridge

MLS® #A2263537

**\$469,000**

5 Bedroom, 3.00 Bathroom, 1,042 sqft

Residential on 0.11 Acres

Uplands, Lethbridge, Alberta

Fantastic Northside Bi/level Five bedroom home, walking distance to grocery shopping, parks schools, bus and lake, located on a Cul de sac with just local traffic, great floor plan upstairs and down, vaulted ceiling with great potential, needs a bit of lipstick and make up and priced accordingly. Call today for an immediate viewing.

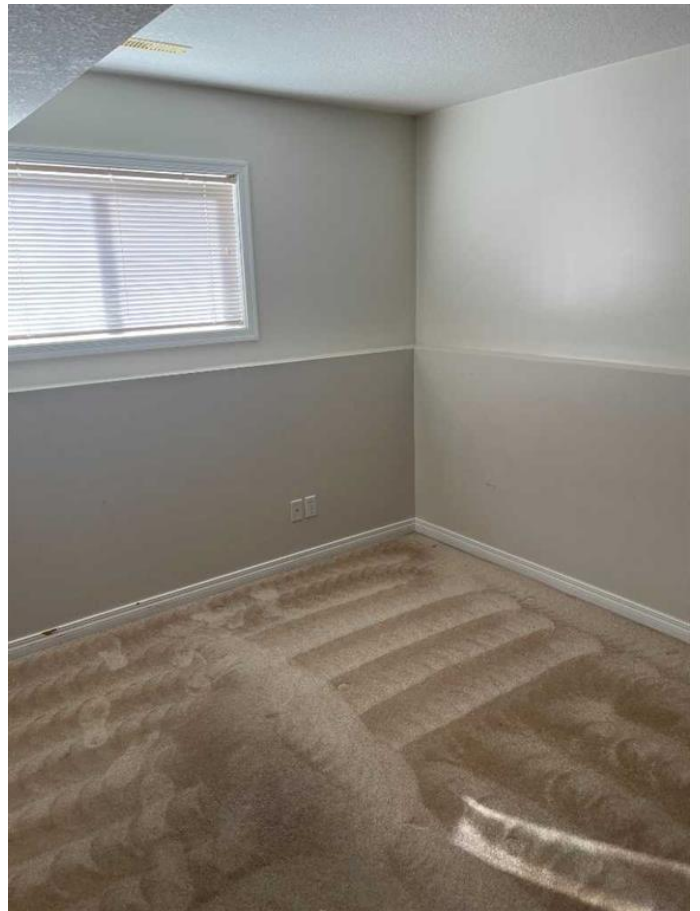
Built in 2000

## Essential Information

MLS® #	A2263537
Price	\$469,000
Bedrooms	5
Bathrooms	3.00
Full Baths	3
Square Footage	1,042
Acres	0.11
Year Built	2000
Type	Residential
Sub-Type	Detached
Style	Bi-Level
Status	Active

## Community Information

Address	64 Ermineview Way N
Subdivision	Uplands
City	Lethbridge
County	Lethbridge



Province	Alberta
Postal Code	T1H 6M8

### Amenities

Parking Spaces	4
Parking	Double Garage Attached
# of Garages	2

### Interior

Interior Features	Granite Counters
Appliances	Central Air Conditioner, Dishwasher, Microwave, Refrigerator, Washer/Dryer
Heating	Forced Air
Cooling	Central Air
Has Basement	Yes
Basement	Finished, Full

### Exterior

Exterior Features	None
Lot Description	Back Yard, City Lot, Cul-De-Sac
Roof	Asphalt
Construction	Concrete, Vinyl Siding, Wood Frame
Foundation	Poured Concrete

### Additional Information

Date Listed	October 6th, 2025
Zoning	R-L

### Listing Details

Listing Office	RE/MAX REAL ESTATE - LETHBRIDGE
----------------	---------------------------------

Data is supplied by Pillar 9â„¢ MLS® System. Pillar 9â„¢ is the owner of the copyright in its MLS® System. Data is deemed reliable but is not guaranteed accurate by Pillar 9â„¢. The trademarks MLS®, Multiple Listing Service® and the associated logos are owned by The Canadian Real Estate Association (CREA) and identify the quality of services provided by real estate professionals who are members of CREA. Used under license.