

\$565,000 - 150 Plamondon Way, Fort McMurray

MLS® #A2262457

\$565,000

5 Bedroom, 4.00 Bathroom, 1,901 sqft
Residential on 0.12 Acres

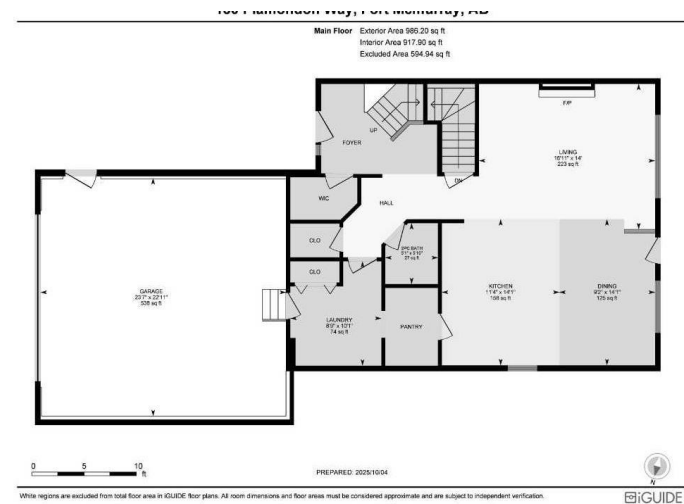
Timberlea, Fort McMurray, Alberta

Beautifully kept home with fresh paint in a convenient location! Welcome to 150 Plamondon Way! Your new home awaits, offering 5 bedrooms, 3.5 bathrooms, ample space for the family, and a fenced backyard to let the kids and pets run! Great curb appeal with vinyl and stone exterior and extra-long driveway. Providing over 2,800 square feet of total living space, this home is clean and move-in ready! Featuring an open-concept living space, a walk-through pantry to your laundry/mud room, and access to your heated double-car garage. The basement is fully developed with a family room or it can be used as a full rec room. Here, you will find 2 bedrooms and a full bathroom. Bonus: within walking distance to bus routes and schools! This home is ready for its new owners. Book your showing today!

Built in 2006

Essential Information

MLS® #	A2262457
Price	\$565,000
Bedrooms	5
Bathrooms	4.00
Full Baths	3
Half Baths	1
Square Footage	1,901
Acres	0.12



Year Built	2006
Type	Residential
Sub-Type	Detached
Style	2 Storey
Status	Active

Community Information

Address	150 Plamondon Way
Subdivision	Timberlea
City	Fort McMurray
County	Wood Buffalo
Province	Alberta
Postal Code	T9K 0A6

Amenities

Parking Spaces	4
Parking	Double Garage Attached, Driveway, Off Street
# of Garages	2

Interior

Interior Features	Breakfast Bar, Built-in Features, Central Vacuum, Closet Organizers, Jetted Tub, Kitchen Island
Appliances	Dishwasher, Dryer, Microwave, Refrigerator, Stove(s), Washer
Heating	Fireplace(s), Forced Air, Natural Gas
Cooling	Central Air
Fireplace	Yes
# of Fireplaces	1
Fireplaces	Gas, Living Room
Has Basement	Yes
Basement	Finished, Full

Exterior

Exterior Features	Fire Pit, Other
Lot Description	Back Yard, Other
Roof	Asphalt Shingle
Construction	Vinyl Siding
Foundation	Poured Concrete

Additional Information

Date Listed	October 10th, 2025
Days on Market	1
Zoning	R1S

Listing Details

Listing Office	RE/MAX Connect
----------------	----------------

Data is supplied by Pillar 9â„¢ MLSÂ® System. Pillar 9â„¢ is the owner of the copyright in its MLSÂ® System. Data is deemed reliable but is not guaranteed accurate by Pillar 9â„¢. The trademarks MLSÂ®, Multiple Listing ServiceÂ® and the associated logos are owned by The Canadian Real Estate Association (CREA) and identify the quality of services provided by real estate professionals who are members of CREA. Used under license.