

# \$649,900 - 232 Wiley Crescent, Red Deer

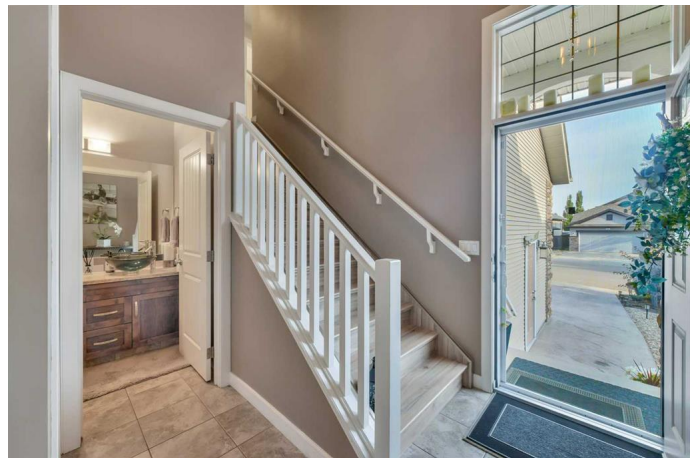
MLS® #A2262157

**\$649,900**

4 Bedroom, 4.00 Bathroom, 1,670 sqft  
Residential on 0.10 Acres

Westlake, Red Deer, Alberta

IMPRESSIVE 2 story HOME in Beautiful WESTLAKE with a private yard that backs onto A TREED area. This home has had lots of NEW exciting features over the last few years. Oh my goodness where to start~ ALL NEW FLOORS throughout. New GRANITE countertops (that light up). New kitchen sink & faucet. NEWER appliances and some new lighting. The GARAGE was drywalled in 2017. NEW PRIMARY ENSUITE shower. NEW VINYL FENCE. new DECK AND PARTIAL DURA DECK COVERING with new GLASS RAILING that also lights up!! This is the BACKYARD FOR ENTERTAINING and watching the sunsets. From the moment you walk through the front door you feel at home with the spacious open concept and HIGH CEILINGS to the second story. The living room is HUGE and welcomes you with a cozy gas fireplace and large windows letting in all the NATURAL SUNLIGHT. Look to the right and step into chefs kitchen with lots of cabinets and EAT-UP counter height Granite countertop. OVERSIZE pantry for all your extras. Eat in kitchen/ dining area that takes you to the oversize deck big enough for all your family and friends. UPSTAIRS there are 2 big bedrooms, a full 4pc bathroom and LAUNDRY ROOM for your convenience. Step into the LARGE Primary bedroom fit for A KING & QUEEN with West views. walk in closet and your very own PRIVATE 3pc ensuite. In the basement there is another BIG bedroom for guest, storage/ utility room. WITH



a FAMILY ROOM sure to please the whole family. Don't take my word for it, come see for yourself. This Beautiful home will surely impress the whole family.

Built in 2008

### Essential Information

|                |             |
|----------------|-------------|
| MLS® #         | A2262157    |
| Price          | \$649,900   |
| Bedrooms       | 4           |
| Bathrooms      | 4.00        |
| Full Baths     | 3           |
| Half Baths     | 1           |
| Square Footage | 1,670       |
| Acres          | 0.10        |
| Year Built     | 2008        |
| Type           | Residential |
| Sub-Type       | Detached    |
| Style          | 2 Storey    |
| Status         | Active      |

### Community Information

|             |                    |
|-------------|--------------------|
| Address     | 232 Wiley Crescent |
| Subdivision | Westlake           |
| City        | Red Deer           |
| County      | Red Deer           |
| Province    | Alberta            |
| Postal Code | T4N 7G6            |

### Amenities

|                |                        |
|----------------|------------------------|
| Parking Spaces | 2                      |
| Parking        | Double Garage Attached |
| # of Garages   | 2                      |

### Interior

|                   |  |
|-------------------|--|
| Interior Features | Ceiling Fan(s), Granite Counters, High Ceilings, Pantry, Sump Pump(s), Vinyl Windows |
| Appliances        | Dishwasher, Electric Stove, Microwave Hood Fan, Refrigerator,                        |

|                 |                                       |
|-----------------|---------------------------------------|
|                 | Washer/Dryer                          |
| Heating         | Fireplace(s), Forced Air, Natural Gas |
| Cooling         | None                                  |
| Fireplace       | Yes                                   |
| # of Fireplaces | 1                                     |
| Fireplaces      | Gas                                   |
| Has Basement    | Yes                                   |
| Basement        | Finished, Full                        |

## Exterior

|                   |  |
|-------------------|--|
| Exterior Features | Private Yard, Storage  |
| Lot Description   | Back Yard, Front Yard, Landscaped, Lawn, No Neighbours Behind, Private, Treed, Paved |
| Roof              | Asphalt Shingle  |
| Construction      | Stone, Vinyl Siding, Wood Frame  |
| Foundation        | Poured Concrete  |

## Additional Information

|                |                   |
|----------------|-------------------|
| Date Listed    | October 6th, 2025 |
| Days on Market | 4                 |
| Zoning         | R-L               |

## Listing Details

|                |                                    |
|----------------|------------------------------------|
| Listing Office | RE/MAX real estate central alberta |
|----------------|------------------------------------|

Data is supplied by Pillar 9â,,ç MLSÂ® System. Pillar 9â,,ç is the owner of the copyright in its MLSÂ® System. Data is deemed reliable but is not guaranteed accurate by Pillar 9â,,ç. The trademarks MLSÂ®, Multiple Listing ServiceÂ® and the associated logos are owned by The Canadian Real Estate Association (CREA) and identify the quality of services provided by real estate professionals who are members of CREA. Used under license.