

\$925,000 - Ne-19-72-10-w6 ., Beaverlodge

MLS® #A2261437

\$925,000

4 Bedroom, 2.00 Bathroom, 1,840 sqft

Residential on 149.78 Acres

NONE, Beaverlodge, Alberta

149.78+/- acres, just 4 miles Northwest of Beaverlodge. Approximately 135+/- Acres is being farmed; the balance is yard site and bush. The quarter has a good 1,840 sqft home with an attached carport. The home has been well-maintained and is in good condition. Outbuildings include a 30' x 40' heated shop with concrete floor, 220 power, and lighting. Miscellaneous outbuildings include an open-faced shed. The yard is landscaped and has a good wind break to the North and West. Gravelled driveway with gated access. There is a gravelled area North of the main yard, across from the clubhouse at Riverbend Golf and Country Club, that has a cold storage building with power and lights. This building and approximately 1.5+/- acres are leased to the owners of the Riverbend golf course for \$3,000 a year. The land tenant has the first right of refusal on any acceptable offers received in writing.

Built in 1987

Essential Information

MLS® #	A2261437
Price	\$925,000
Bedrooms	4
Bathrooms	2.00
Full Baths	2
Square Footage	1,840
Acres	149.78



Year Built	1987
Type	Residential
Sub-Type	Detached
Style	Acreage with Residence, Bur
Status	Active

Community Information

Address	Ne-19-72-10-w6 .
Subdivision	NONE
City	Beaverlodge
County	Grande Prairie No. 1, County
Province	Alberta
Postal Code	T0H 0C0

Amenities

Parking Spaces	6
Parking	Attached Carport, Gravel Drive

Interior

Interior Features	Jetted Tub, Kitchen Island, P
Appliances	See Remarks
Heating	Forced Air, Natural Gas
Cooling	Central Air
Has Basement	Yes
Basement	Partial, Partially Finished

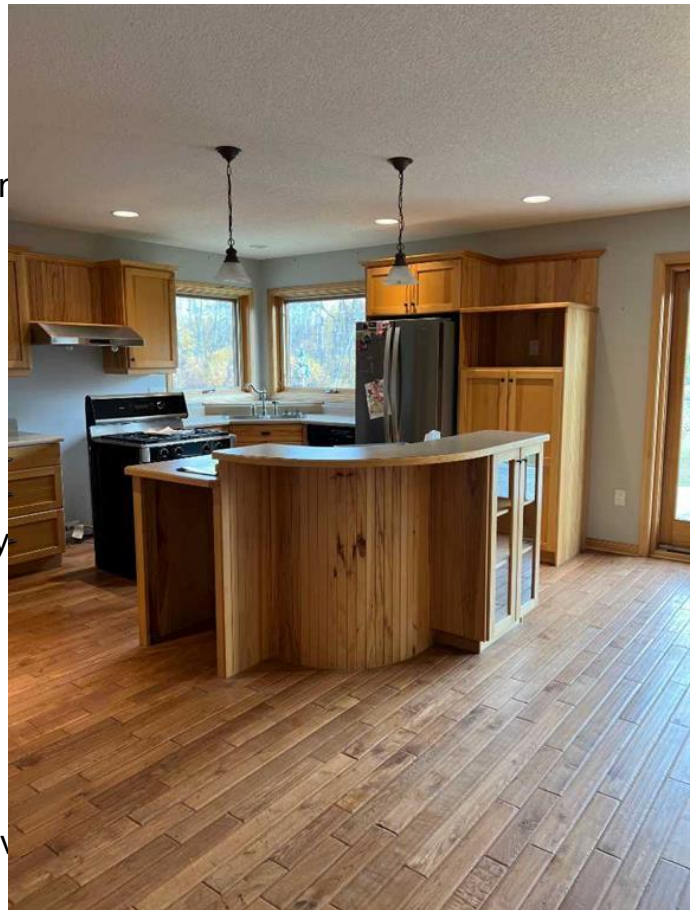
Exterior

Exterior Features	None
Lot Description	Close to Clubhouse
Roof	Asphalt Shingle
Construction	Vinyl Siding
Foundation	Poured Concrete

Additional Information

Date Listed	October 7th, 2025
Days on Market	1
Zoning	AG

Listing Details



Data is supplied by Pillar 9â„¢ MLS® System. Pillar 9â„¢ is the owner of the copyright in its MLS® System. Data is deemed reliable but is not guaranteed accurate by Pillar 9â„¢. The trademarks MLS®, Multiple Listing Service® and the associated logos are owned by The Canadian Real Estate Association (CREA) and identify the quality of services provided by real estate professionals who are members of CREA. Used under license.