

\$475,000 - 421, 41251 Range Road 210, Rural Camrose County

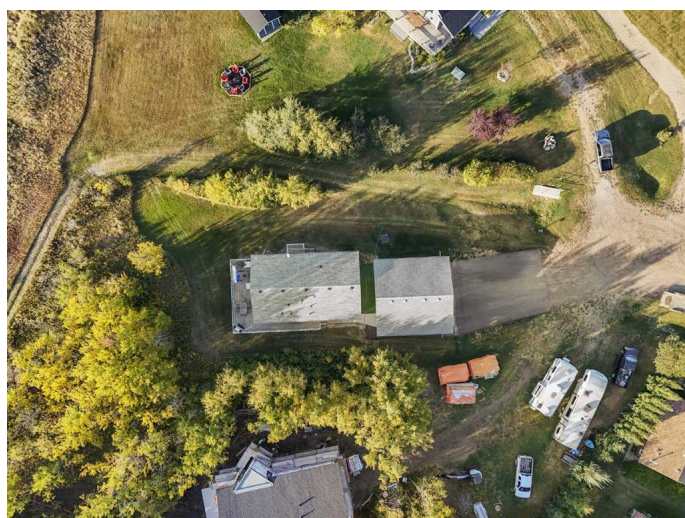
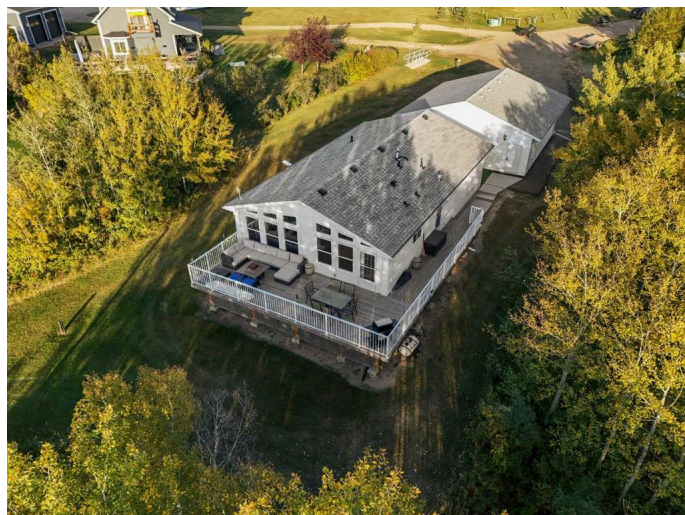
MLS® #A2260359

\$475,000

3 Bedroom, 2.00 Bathroom, 1,328 sqft
Residential on 0.48 Acres

Braseth Beach, Rural Camrose County,
Alberta

Life at the lake feels different at Braseth Beach. This gated community on Buffalo Lake's north shore offers a sense of welcome and a balance of peace and recreation. Here, you'll find a home that is completely turnkey offering everything you need to enjoy lake life full time or as the perfect seasonal escape, without paying the premium of lakefront pricing. Inside, the layout is designed for easy living. An open-concept kitchen, dining, and living area flows beneath vaulted ceilings, giving the space both charm and openness. The wall of windows draws your eye to the pond just beyond and captures the kind of sunsets that turn evenings into something special. It's no wonder this is known as the "Sunset Home" you'll find yourself pausing each night to watch the colors reflect across the water. With three bedrooms, including a primary suite complete with a private four-piece ensuite, there's plenty of space for family or friends. The home's square footage is comfortable and manageable, and AC is in place to keep things comfortable after a long day in the summer sun. Outdoors, the west-facing deck is where you'll spend evenings unwinding, with plenty of room for patio furniture and guests. The oversized, heated double garage is a true bonus, with space for vehicles, lake toys, and even a Tesla



charger already in place. Positioned at the end of a quiet close, youâ€™ll enjoy privacy and a slower pace, yet still be just a short walk to the communityâ€™s sandy beach, private playground, and boat launch. The setting is enhanced by open pasture views and a warm, neighborly atmosphere. For essentials, Bashaw is only a few minutes away, making this location as practical as it is beautiful. This is more than a houseâ€”itâ€™s a lifestyle, a gathering place, and a chance to experience all that Buffalo Lake has to offer, every season of the year.

Here, the lake is more than a backdropâ€”itâ€™s a lifestyle you can step into, ready-made, from the moment you arrive.

Built in 2013

Essential Information

MLS® #	A2260359
Price	\$475,000
Bedrooms	3
Bathrooms	2.00
Full Baths	2
Square Footage	1,328
Acres	0.48
Year Built	2013
Type	Residential
Sub-Type	Detached
Style	Bungalow
Status	Active

Community Information

Address	421, 41251 Range Road 210
Subdivision	Braseth Beach
City	Rural Camrose County
County	Camrose County
Province	Alberta
Postal Code	T0B 0H0

Amenities

Amenities	Beach Access, Boating
Parking Spaces	2
Parking	Double Garage Detached, Heated Garage
# of Garages	2

Interior

Interior Features	Ceiling Fan(s), Laminate Counters, No Smoking Home, Open Floorplan, Beamed Ceilings
Appliances	Dishwasher, Refrigerator, Stove(s), Washer/Dryer
Heating	Forced Air
Cooling	Central Air
Basement	None

Exterior

Exterior Features	BBQ gas line, Private Yard
Lot Description	No Neighbours Behind
Roof	Asphalt Shingle
Construction	Vinyl Siding, Wood Frame
Foundation	ICF Block

Additional Information

Date Listed	September 29th, 2025
Days on Market	4
Zoning	LR
HOA Fees	160
HOA Fees Freq.	MON

Listing Details

Listing Office	RE/MAX 1st Choice Realty
----------------	--------------------------

Data is supplied by Pillar 9â„¢ MLS® System. Pillar 9â„¢ is the owner of the copyright in its MLS® System. Data is deemed reliable but is not guaranteed accurate by Pillar 9â„¢. The trademarks MLS®, Multiple Listing Service® and the associated logos are owned by The Canadian Real Estate Association (CREA) and identify the quality of services provided by real estate professionals who are members of CREA. Used under license.