

\$414,900 - 62 Park Meadows Lane Se, Medicine Hat

MLS® #A2259039

\$414,900

2 Bedroom, 3.00 Bathroom, 1,255 sqft

Residential on 0.08 Acres

Southview-Park Meadows, Medicine Hat, Alberta

Welcome to Park Meadows Estates â€” a vibrant 55+ community of like-minded neighbors, centrally located close to all amenities. This beautifully updated home is completely move-in ready, with modern finishes and thoughtful touches throughout.

Step inside and youâ€™ll love the newer vinyl plank flooring that flows seamlessly through the main level, creating warmth and continuity. Updates include newer doors, baseboards, trim, hardware, and light fixtures for a fresh, modern look. The kitchen shines with brand-new cabinets, countertops, and backsplash, all complemented by neutral paint tones. Plus, all main floor windows have just been replaced.

The living and dining area feel bright and spacious thanks to the vaulted ceiling, while the primary bedroom offers double closets and a gorgeous 3-piece ensuite with a new walk-in shower and modern vanity. Both bathrooms feature comfort-height toilets, and the second bedroom is conveniently located near the updated main bath. Main floor laundry adds to the ease of living.

An enclosed north-facing sunroom extends your living space, perfect for quiet mornings or entertaining friends. Need more room? The fully finished basement provides a family room, guest area, 2-piece bath, flex room (ideal for



an office or crafts), and plenty of storage.

Other highlights include a double attached garage, landscaping and snow removal included in the low condo fee of just \$337.25/month, and access to the clubhouse for community events. Walking paths surround the area, making it easy to stay active. Pet-friendly with restrictions (one pet per household).

This home truly checks all the boxesâ€”donâ€™t miss your chance to be part of this welcoming community!

Built in 1993

Essential Information

MLS® #	A2259039
Price	\$414,900
Bedrooms	2
Bathrooms	3.00
Full Baths	2
Half Baths	1
Square Footage	1,255
Acres	0.08
Year Built	1993
Type	Residential
Sub-Type	Row/Townhouse
Style	Bungalow
Status	Active

Community Information

Address	62 Park Meadows Lane Se
Subdivision	Southview-Park Meadows
City	Medicine Hat
County	Medicine Hat
Province	Alberta
Postal Code	T1B 4E4

Amenities

Amenities	Clubhouse, Park, Recreation Storage
Parking Spaces	2
Parking	Double Garage Attached
# of Garages	2

Interior

Interior Features	Built-in Features, High Ceiling(s), Vinyl Windows
Appliances	Dishwasher, Dryer, Garage Stove(s), Washer, Window C
Heating	Forced Air
Cooling	Central Air
Has Basement	Yes
Basement	Finished, Full

Exterior

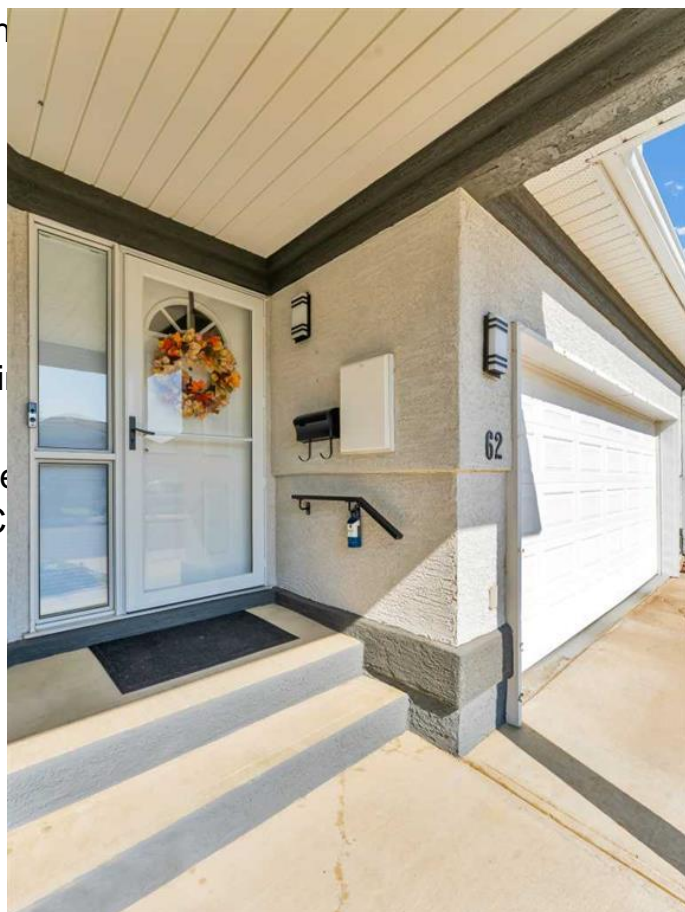
Exterior Features	Other
Lot Description	Landscaped, Lawn, Level, Street Lighting, Treed, Underground Sprinklers, Close to Clubhouse
Roof	Clay Tile
Construction	Stucco
Foundation	Poured Concrete

Additional Information

Date Listed	September 22nd, 2025
Zoning	R-LD

Listing Details

Listing Office	SOURCE 1 REALTY CORP.
----------------	-----------------------



Data is supplied by Pillar 9â„¢ MLSÂ® System. Pillar 9â„¢ is the owner of the copyright in its MLSÂ® System. Data is deemed reliable but is not guaranteed accurate by Pillar 9â„¢. The trademarks MLSÂ®, Multiple Listing ServiceÂ® and the associated logos are owned by The Canadian Real Estate Association (CREA) and identify the quality of services provided by real estate professionals who are members of CREA. Used under license.