

\$450,000 - 30 Joice Close, Red Deer

MLS® #A2258076

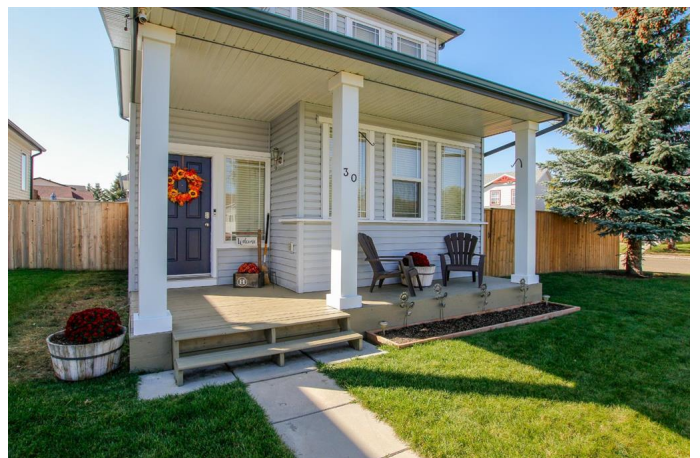
\$450,000

4 Bedroom, 4.00 Bathroom, 1,546 sqft

Residential on 0.10 Acres

Johnstone Park, Red Deer, Alberta

4 BEDROOM, 4 BATHROOM 2-STOREY WITH OVER 1540 SQ. FT. ABOVE GRADE ~ FULLY FINISHED BASEMENT ~ 24' X 22' DETACHED GARAGE ~ CORNER LOT WITH A WEST FACING BACKYARD ~ Covered front veranda that spans the front of the home welcomes you ~ The welcoming foyer has tile flooring and over 18' high ceilings that open to the upper level ~ The living room features large windows that fill the space with natural light and a cozy gas fireplace with stone details and a TV mount above ~ The kitchen offers a functional layout with plenty of dark stained cabinets, ample counter space including a massive island with an eating bar, full tile backsplash and a walk in corner pantry ~ 2 piece main floor bath ~ Easily entertain guests in the spacious dining room with an abundance of large windows and garden door access to the covered deck and backyard ~ The conveniently located main floor primary bedroom can easily accommodate a king size bed plus multiple pieces of furniture, has a second garden door to the covered deck, a walk in closet with built in organizers and a 4 piece ensuite bathroom ~ Open staircase with more large windows offering natural light leads to the upper level bonus room ~ 2 generous size bedrooms with ample closet space share a 4 piece bathroom with an oversized vanity and built in linen shelving ~ The fully finished basement has a huge family room, 4th bedroom, 4 piece bathroom, laundry with a sink and tons of storage throughout ~ Other



great features include; Wired for sound with speakers throughout, central vacuum with kitchen kick pan ~ The sunny west facing backyard is landscaped, fully fenced and has access to the side street and back alley ~ 24' long x 22' wide double detached garage is insulated and finished with O.S.B. ~ Excellent location; steps to multiple parks, playgrounds and walking trails, walking distance to multiple schools, rec centres and tons of shopping, dining, and all other amenities ~ Move in ready!

Built in 2005

Essential Information

MLS® #	A2258076
Price	\$450,000
Bedrooms	4
Bathrooms	4.00
Full Baths	3
Half Baths	1
Square Footage	1,546
Acres	0.10
Year Built	2005
Type	Residential
Sub-Type	Detached
Style	2 Storey
Status	Active

Community Information

Address	30 Joice Close
Subdivision	Johnstone Park
City	Red Deer
County	Red Deer
Province	Alberta
Postal Code	T4P 4C7

Amenities

Utilities	Electricity Connected, Natural Gas Connected
-----------	--

Parking Spaces	2
Parking	Alley Access, Double Garage Detached, Garage Door Opener, Insulated, See Remarks, Garage Faces Rear
# of Garages	2

Interior

Interior Features	Breakfast Bar, Ceiling Fan(s), Central Vacuum, Chandelier, Closet Organizers, High Ceilings, Kitchen Island, Pantry, Separate Entrance, Soaking Tub, Storage, Vinyl Windows, Walk-In Closet(s), Wired for Sound
Appliances	Dishwasher, Garage Control(s), Microwave, Refrigerator, See Remarks, Stove(s), Washer/Dryer
Heating	Forced Air, Natural Gas
Cooling	None
Fireplace	Yes
# of Fireplaces	1
Fireplaces	Gas, Mantle, See Remarks, Stone
Has Basement	Yes
Basement	Finished, Full

Exterior

Exterior Features	Private Entrance, Private Yard
Lot Description	Back Lane, Back Yard, Corner Lot, Front Yard, Irregular Lot, Landscaped
Roof	Asphalt Shingle
Construction	Vinyl Siding, Wood Frame
Foundation	Poured Concrete

Additional Information

Date Listed	October 2nd, 2025
Zoning	R-N

Listing Details

Listing Office	Lime Green Realty Central
----------------	---------------------------

Data is supplied by Pillar 9â„¢ MLS® System. Pillar 9â„¢ is the owner of the copyright in its MLS® System. Data is deemed reliable but is not guaranteed accurate by Pillar 9â„¢. The trademarks MLS®, Multiple Listing Service® and the associated logos are owned by The Canadian Real Estate Association (CREA) and identify the quality of services provided by real estate professionals who are members of CREA. Used under license.