

\$375,000 - 363 Mildred Dobbs Boulevard N, Lethbridge

MLS® #A2257222

\$375,000

3 Bedroom, 3.00 Bathroom, 1,236 sqft

Residential on 0.06 Acres

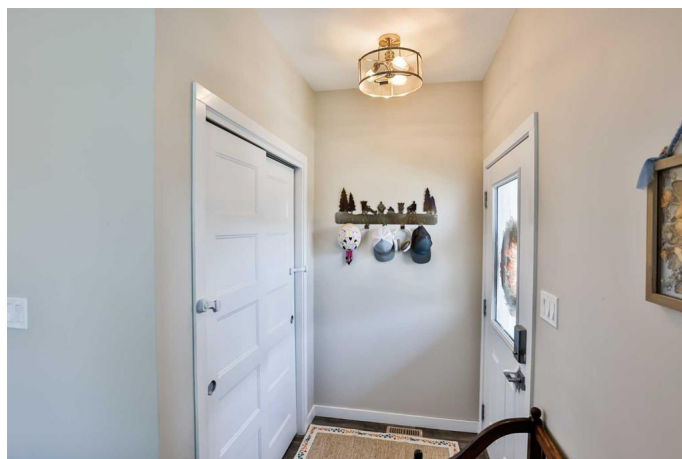
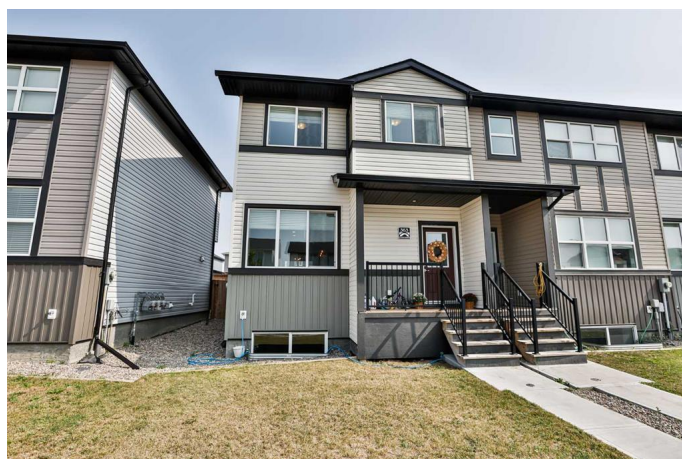
Legacy Ridge / Hardieville, Lethbridge, Alberta

Welcome to your dream townhome, a two-story residence in the desirable Legacy community in North Lethbridge. This inviting property features three spacious bedrooms and 2½ bathrooms, creating ample space for families of all sizes. The modern kitchen is equipped with stainless steel appliances, offering a sleek and contemporary space for culinary endeavors. The bright interior is enhanced by beautiful laminate floors that perfectly complement the open floor plan seamlessly connecting the living areas. The basement has some drywall and electrical work done, and the stacked laundry. Outside, a fenced-in backyard provides a secure and private retreat, while double parking at the rear adds to the convenience. Ideally situated close to schools and walking trails in the coulees, this townhome is perfect for first-time home buyers as well as those seeking an investment property.

Built in 2019

Essential Information

MLS® #	A2257222
Price	\$375,000
Bedrooms	3
Bathrooms	3.00
Full Baths	2
Half Baths	1
Square Footage	1,236



Acres	0.06
Year Built	2019
Type	Residential
Sub-Type	Row/Townhouse
Style	2 Storey
Status	Active

Community Information

Address	363 Mildred Dobbs Boulevard N
Subdivision	Legacy Ridge / Hardieville
City	Lethbridge
County	Lethbridge
Province	Alberta
Postal Code	T1H 7H1

Amenities

Parking Spaces	2
Parking	Parking Pad

Interior

Interior Features	Closet Organizers
Appliances	Central Air Conditioner, Dishwasher, Microwave Hood Fan, Refrigerator, Stove(s), Washer/Dryer Stacked, Window Coverings
Heating	Forced Air, Natural Gas
Cooling	Central Air
Has Basement	Yes
Basement	Full, Unfinished

Exterior

Exterior Features	Other
Lot Description	Back Yard
Roof	Asphalt Shingle
Construction	Vinyl Siding
Foundation	Poured Concrete

Additional Information

Date Listed	September 18th, 2025
Zoning	R-M

Listing Details

Listing Office

RE/MAX REAL ESTATE - LETHBRIDGE

Data is supplied by Pillar 9â„¢ MLSÂ® System. Pillar 9â„¢ is the owner of the copyright in its MLSÂ® System. Data is deemed reliable but is not guaranteed accurate by Pillar 9â„¢. The trademarks MLSÂ®, Multiple Listing ServiceÂ® and the associated logos are owned by The Canadian Real Estate Association (CREA) and identify the quality of services provided by real estate professionals who are members of CREA. Used under license.