

\$969,900 - 15422 107 Street, Rural Grande Prairie No. 1, County of

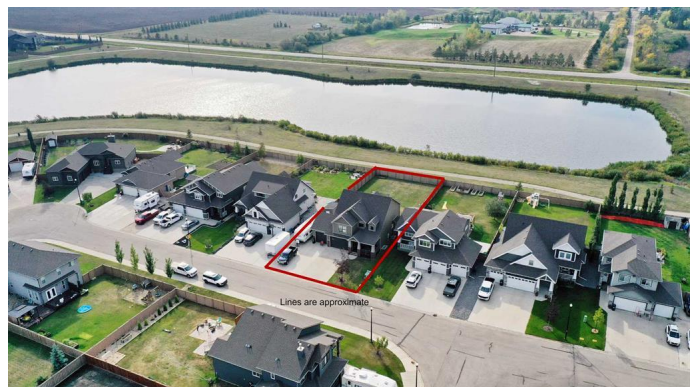
MLS® #A2257195

\$969,900

5 Bedroom, 4.00 Bathroom, 2,545 sqft
Residential on 0.25 Acres

Whispering Ridge, Rural Grande Prairie No. 1,
County of, Alberta

Welcome to this stunning 2,545 sq. ft. turnkey Deeproot Home, with their quality craftsmanship and style on display both inside and out. Situated on a massive west backing lot, this property's prime location overlooks tranquil pond and scenic walking trails. The curb appeal is undeniable, with Hardy Plank siding, brick accents, and a large covered front veranda that further showcases Deeproot's™ attention to detail. Inside, the open and inviting floor plan is perfect for family life and entertaining. The bright main level includes an office, powder room, and a large living room with a floor-to-ceiling stone fireplace and wide plank hardwood flooring. The custom white kitchen is the centerpiece, featuring black stainless appliances, quartz countertops, massive island, and butler's pantry. Upstairs, you'll find three large bedrooms, including a luxurious primary suite with a tray ceiling, shiplap, and an incredible ensuite with a floating double-sink vanity and a freestanding soaker tub. The top floor also features a bonus room (currently used as 4th upper bedroom), a tech area, a huge laundry room, and a main bathroom with double sinks. The professionally finished basement significantly expands the living space, offering two more bedrooms, full bathroom, and a spacious living room. Additional features include custom blinds, concrete RV parking,



large concrete patio, maintenance-free decks, fence, AC, 2 sheds and a fully finished and heated triple garage. This home is a rare find, offering a perfect blend of luxury, location, and functionality that can't be replicated.

Built in 2016

Essential Information

MLS® #	A2257195
Price	\$969,900
Bedrooms	5
Bathrooms	4.00
Full Baths	3
Half Baths	1
Square Footage	2,545
Acres	0.25
Year Built	2016
Type	Residential
Sub-Type	Detached
Style	2 Storey
Status	Active

Community Information

Address	15422 107 Street
Subdivision	Whispering Ridge
City	Rural Grande Prairie No. 1, County of
County	Grande Prairie No. 1, County of
Province	Alberta
Postal Code	T8X 0M1

Amenities

Parking Spaces	6
Parking	Parking Pad, RV Access/Parking, Triple Garage Attached
# of Garages	3

Interior

Interior Features	Double Vanity, High Ceilings, Kitchen Island, Open Floorplan, Pantry, Recessed Lighting, Soaking Tub, Vaulted Ceiling(s), Walk-In Closet(s)
-------------------	---

Appliances	Central Air Conditioner, Dishwasher, Gas Stove, Microwave, Refrigerator, Washer/Dryer
Heating	Forced Air, Natural Gas
Cooling	Central Air
Fireplace	Yes
# of Fireplaces	1
Fireplaces	Gas, Living Room, Mantle, Stone
Has Basement	Yes
Basement	Finished, Full

Exterior

Exterior Features	Garden, Private Yard
Lot Description	Back Yard, No Neighbours Behind, Rectangular Lot
Roof	Asphalt Shingle
Construction	Brick, Composite Siding, Wood Frame
Foundation	Poured Concrete

Additional Information

Date Listed	September 16th, 2025
Zoning	RR-1

Listing Details

Listing Office	Royal LePage - The Realty Group
----------------	---------------------------------

Data is supplied by Pillar 9â„¢ MLS® System. Pillar 9â„¢ is the owner of the copyright in its MLS® System. Data is deemed reliable but is not guaranteed accurate by Pillar 9â„¢. The trademarks MLS®, Multiple Listing Service® and the associated logos are owned by The Canadian Real Estate Association (CREA) and identify the quality of services provided by real estate professionals who are members of CREA. Used under license.