

# \$459,900 - 29275 Range Road 52, Rural Mountain View County

---

MLS® #A2257043

**\$459,900**

0 Bedroom, 0.00 Bathroom,  
Land on 5.31 Acres

NONE, Rural Mountain View County, Alberta

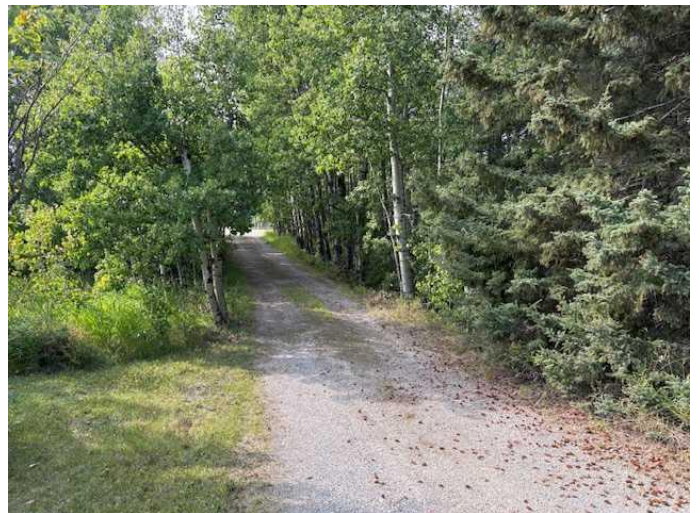
Here is your opportunity to purchase this beautiful 5.31 acre parcel on the southern edge of Water Valley Alberta. This property is located on paved road. Offers a fully landscaped setting with trees, grass, small pond and year round creek. Services on the property include power, water well and natural gas. Great property to use for camping while you make plans to build your future home. Less then 1 hour to Calgary and located 3 minutes to Water Valley Golf Course. 29275 Range Road 52.

## Essential Information

MLS® #	A2257043
Price	\$459,900
Bathrooms	0.00
Acres	5.31
Type	Land
Sub-Type	Residential Land
Status	Active

## Community Information

Address	29275 Range Road 52
Subdivision	NONE
City	Rural Mountain View County
County	Mountain View County
Province	Alberta



Postal Code           T0M 2E0

**Amenities**

Utilities               Electricity Available, Natural Gas Available

**Additional Information**

Date Listed           September 14th, 2025

Days on Market       1

Zoning                Ag

**Listing Details**

Listing Office         RE/MAX Real Estate (Mountain View)

Data is supplied by Pillar 9â„¢ MLSÂ® System. Pillar 9â„¢ is the owner of the copyright in its MLSÂ® System. Data is deemed reliable but is not guaranteed accurate by Pillar 9â„¢. The trademarks MLSÂ®, Multiple Listing ServiceÂ® and the associated logos are owned by The Canadian Real Estate Association (CREA) and identify the quality of services provided by real estate professionals who are members of CREA. Used under license.