

# \$659,000 - 9 Sheep Close, Lacombe

MLS® #A2256652

## \$659,000

4 Bedroom, 3.00 Bathroom, 1,426 sqft

Residential on 0.14 Acres

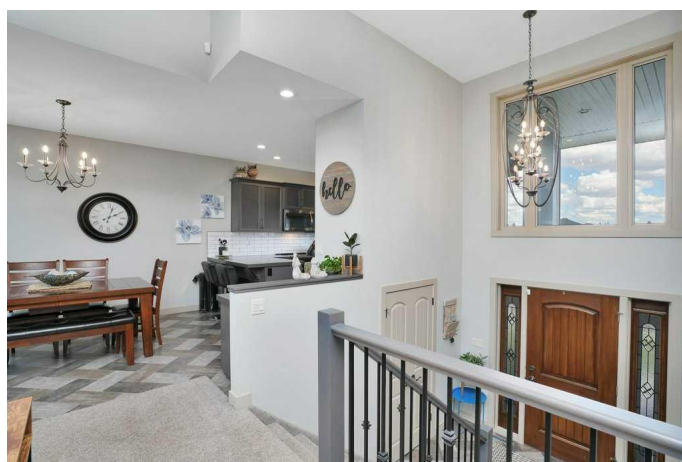
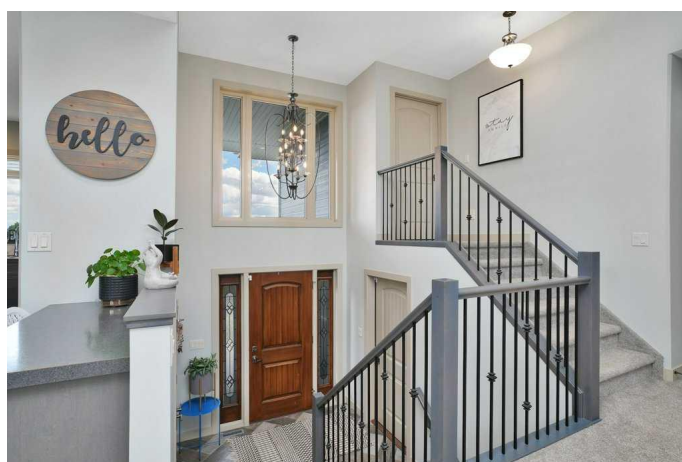
Shepherd Heights, Lacombe, Alberta

Legally Suited and Elegantly Appointed home located on a large lot in a Fantastic Community. The Main Floor offers 3 bedrooms up with a Functional Kitchen, Great Room with a Cozy Gas Fireplace, Dining Area and Sunny West Facing Covered Deck. Plenty of space for a King-Sized Bed in the Master bedroom with a Walk-In Closet and 4 Piece Ensuite with Dual Vanities . The Main Floor also has the use of a Flex Room in the Basement that could double a 4th Bedroom or Office. The One Bedroom Suite has Large Windows, Separate Entrance, Large Kitchen/Living Room Space, its own Laundry Facilities, and In-Floor Heat. Numerous Great Upgrades including; Hardiplank Siding, Heated Garage, Central Air Conditioning, and Maintenance Free Vinyl Fencing. There is also 2 Car Parking for the Suite. This exceptional property is a short walk from Cranna lake and a network of beautiful walking trails. A Great Investment that needs nothing, and is all set up to help you pay for your mortgage.

Built in 2017

## Essential Information

MLS® #	A2256652
Price	\$659,000
Bedrooms	4
Bathrooms	3.00
Full Baths	3



Square Footage	1,426
Acres	0.14
Year Built	2017
Type	Residential
Sub-Type	Detached
Style	Modified Bi-Level
Status	Active

### Community Information

Address	9 Sheep Close
Subdivision	Shepherd Heights
City	Lacombe
County	Lacombe
Province	Alberta
Postal Code	T4L 1J0

### Amenities

Parking Spaces	5
Parking	Concrete Driveway, Double Garage Attached, Garage Door Opener, Garage Faces Front, Heated Garage, Insulated, Oversized
# of Garages	2

### Interior

Interior Features	Ceiling Fan(s), Central Vacuum, High Ceilings, No Smoking Home, Separate Entrance, Vinyl Windows, Walk-In Closet(s)
Appliances	Central Air Conditioner
Heating	High Efficiency, In Floor, Forced Air, Natural Gas
Cooling	Central Air
Fireplace	Yes
# of Fireplaces	1
Fireplaces	Brick Facing, Gas, Living Room, Mantle
Has Basement	Yes
Basement	Exterior Entry, Finished, Full, Suite, Walk-Up To Grade

### Exterior

Exterior Features	Private Yard
Lot Description	Back Lane, Cul-De-Sac, Landscaped, Lawn, Low Maintenance Landscape, Street Lighting
Roof	Asphalt Shingle

Construction	Composite Siding, Concrete, Wood Frame
Foundation	Poured Concrete

**Additional Information**

Date Listed	September 12th, 2025
Days on Market	1
Zoning	R1

**Listing Details**

Listing Office	RE/MAX real estate central alberta
----------------	------------------------------------

Data is supplied by Pillar 9â„¢ MLS® System. Pillar 9â„¢ is the owner of the copyright in its MLS® System. Data is deemed reliable but is not guaranteed accurate by Pillar 9â„¢. The trademarks MLS®, Multiple Listing Service® and the associated logos are owned by The Canadian Real Estate Association (CREA) and identify the quality of services provided by real estate professionals who are members of CREA. Used under license.