

# \$599,900 - 552 Lewisburg Place Ne, Calgary

MLS® #A2256381

**\$599,900**

3 Bedroom, 3.00 Bathroom, 1,620 sqft  
Residential on 0.06 Acres

Lewisburg, Calgary, Alberta

This beautifully designed home by TRUMAN pairs contemporary architecture with refined finishes and meticulous attention to detail, offering a rare opportunity to own in Lewisburg—one of Calgary's newest and most thoughtfully planned communities.

With three spacious bedrooms and a bright, open-concept floor plan, this home is crafted for modern living without compromise. At the rear of the home, the chef-inspired kitchen is as functional as it is stylish—featuring full-height cabinetry with soft-close doors and drawers, elegant quartz countertops, a premium stainless steel appliance package, and a generous pantry to keep everything organized.

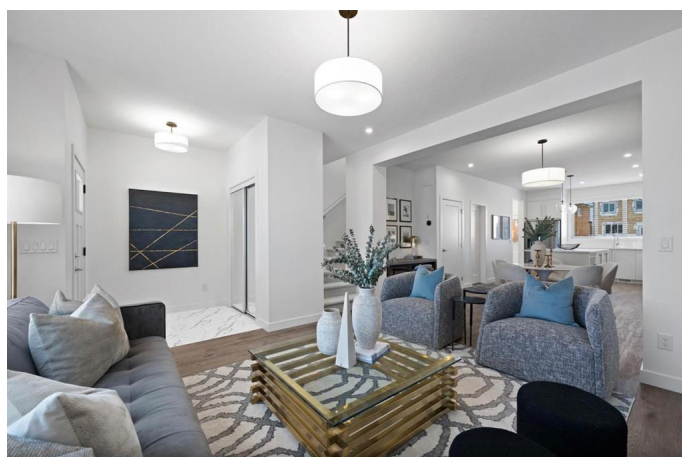
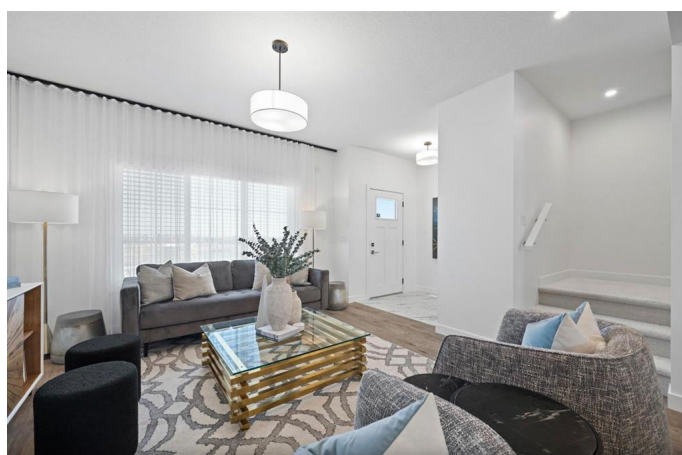
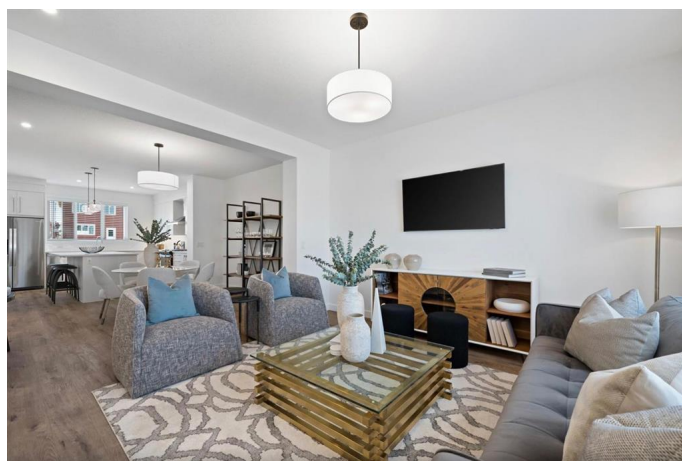
The main floor impresses with soaring 9' ceilings and durable luxury vinyl plank flooring, creating a seamless flow between the living and dining areas—perfect for both everyday living and entertaining.

Upstairs, the primary suite offers a private retreat with a walk-in closet and a sleek 3-piece ensuite. Two additional bedrooms provide versatile space for children, guests, or a home office, while a 4-piece main bath and convenient upper-level laundry with included washer and dryer make daily life effortless.

The unfinished basement with a separate side entrance is a rare and valuable feature, offering endless potential.

Life in Lewisburg means enjoying a community that blends tranquility with connectivity.

Surrounded by parks, pathways, and green



spaces, it invites an active, outdoor lifestyle while keeping you close to major routes, shopping, and city amenities. \*Photo gallery of similar home\*

Built in 2025

**Essential Information**

MLS® #	A2256381
Price	\$599,900
Bedrooms	3
Bathrooms	3.00
Full Baths	2
Half Baths	1
Square Footage	1,620
Acres	0.06
Year Built	2025
Type	Residential
Sub-Type	Detached
Style	2 Storey
Status	Active

**Community Information**

Address	552 Lewisburg Place Ne
Subdivision	Lewisburg
City	Calgary
County	Calgary
Province	Alberta
Postal Code	T3P 2N4

**Amenities**

Parking Spaces	2
Parking	Off Street

**Interior**

Interior Features	Kitchen Island, Separate Entrance
Appliances	Dishwasher, Microwave Hood Fan, Range, Refrigerator, Washer/Dryer
Heating	Forced Air
Cooling	None

Has Basement	Yes
Basement	Full, Unfinished

### Exterior

Exterior Features	None
Lot Description	Back Lane
Roof	Asphalt Shingle
Construction	Vinyl Siding, Wood Frame
Foundation	Poured Concrete

### Additional Information

Date Listed	September 11th, 2025
Days on Market	1
Zoning	R-G

### Listing Details

Listing Office	RE/MAX First
----------------	--------------

Data is supplied by Pillar 9â„¢ MLS® System. Pillar 9â„¢ is the owner of the copyright in its MLS® System. Data is deemed reliable but is not guaranteed accurate by Pillar 9â„¢. The trademarks MLS®, Multiple Listing Service® and the associated logos are owned by The Canadian Real Estate Association (CREA) and identify the quality of services provided by real estate professionals who are members of CREA. Used under license.