

# \$1,095,000 - 233055 Range Road 250, Rural Wheatland County

MLS® #A2256052

**\$1,095,000**

4 Bedroom, 3.00 Bathroom, 1,206 sqft  
Residential on 7.00 Acres

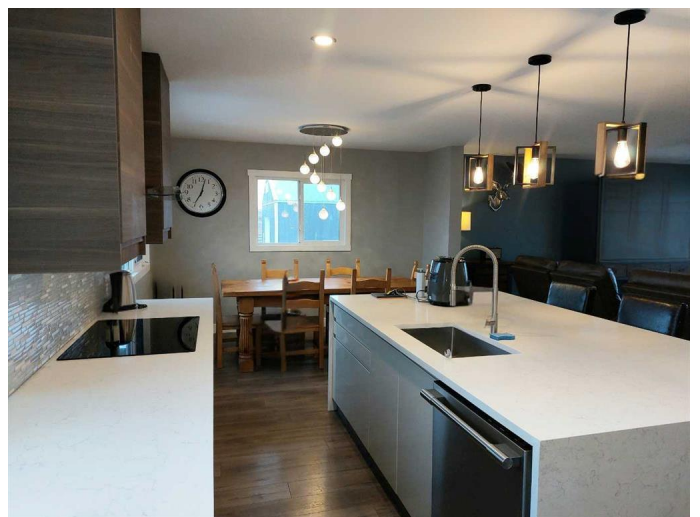
NONE, Rural Wheatland County, Alberta

This 7 acre property only 10 minutes South of Strathmore, has everything for your country living enjoyment!! A fully renovated and fully developed 1206ft2 bungalow, newer 30'x60' fully finished heated and insulated workshop, a new 5 box stall barn 36'36', and outdoor riding arena and pasture and turnout pens for the horses!! This 4 bedroom 3 bath home has been upgraded and modernized substantially including a new kitchen,new flooring,paint,fixtures,bathrooms and utilities and offers a fully developed lower level with 9" ceilings and a large game/recreation room!! Located on a very quiet dead end road yet close to town for convenience. If you're a horse person,a mechanic or are hoping to be and want your own piece of property to enjoy the country living lifestyle then come have a look at this property today.

Built in 1970

## Essential Information

MLS® #	A2256052
Price	\$1,095,000
Bedrooms	4
Bathrooms	3.00
Full Baths	3
Square Footage	1,206
Acres	7.00



Year Built	1970
Type	Residential
Sub-Type	Detached
Style	Acreage with Residence, Bungalow
Status	Active

### **Community Information**

Address	233055 Range Road 250
Subdivision	NONE
City	Rural Wheatland County
County	Wheatland County
Province	Alberta
Postal Code	T1P 1J6

### **Amenities**

Utilities	Electricity Connected, Heating Paid For, Propane
Parking	Insulated, 220 Volt Wiring, Quad or More Detached

### **Interior**

Interior Features	Kitchen Island, Skylight(s), Vinyl Windows
Appliances	Dishwasher, Gas Oven, Microwave, Washer/Dryer, Window Coverings
Heating	Forced Air, Propane
Cooling	None
Has Basement	Yes
Basement	Finished, Full

### **Exterior**

Exterior Features	BBQ gas line, Fire Pit, Dog Run
Lot Description	Level, Pasture
Roof	Asphalt Shingle
Construction	Wood Frame
Foundation	Poured Concrete

### **Additional Information**

Date Listed	September 11th, 2025
Days on Market	1
Zoning	CR

### **Listing Details**

Listing Office

RE/MAX Landan Real Estate

Data is supplied by Pillar 9â„¢ MLSÂ® System. Pillar 9â„¢ is the owner of the copyright in its MLSÂ® System. Data is deemed reliable but is not guaranteed accurate by Pillar 9â„¢. The trademarks MLSÂ®, Multiple Listing ServiceÂ® and the associated logos are owned by The Canadian Real Estate Association (CREA) and identify the quality of services provided by real estate professionals who are members of CREA. Used under license.