

\$219,900 - 103, 9124 96 Avenue, Grande Prairie

MLS® #A2254595

\$219,900

2 Bedroom, 2.00 Bathroom, 951 sqft
Residential on 0.00 Acres

Cobblestone., Grande Prairie, Alberta

This very well-kept condo is ground-level and has a nice concrete pad to have a patio set and enjoy the warm weather!!! There are 2 bedrooms and 2 bathrooms. Laminate flooring in the living room and dining room. The kitchen has nice light wood cabinets, black appliances, and nice lighting. The primary bedroom has a full 4 piece ensuite, bedroom 2, 3 piece bathroom, and a laundry/ storage room. Don't miss out on this great ground-level condo!!! Book your showing today!!!

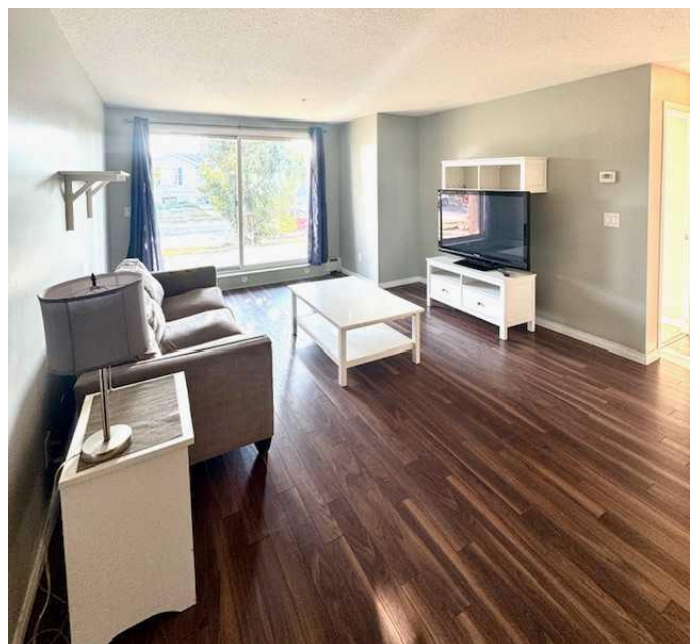
Built in 2008

Essential Information

MLS® #	A2254595
Price	\$219,900
Bedrooms	2
Bathrooms	2.00
Full Baths	2
Square Footage	951
Acres	0.00
Year Built	2008
Type	Residential
Sub-Type	Apartment
Style	Multi Level Unit
Status	Active

Community Information

Address	103, 9124 96 Avenue
Subdivision	Cobblestone.



City	Grande Prairie
County	Grande Prairie
Province	Alberta
Postal Code	T8X 0A1

Amenities

Amenities	Elevator(s), Fitness Center
Parking Spaces	1
Parking	Underground

Interior

Interior Features	Laminate Counters
Appliances	Dishwasher, Dryer, Electric Stove, Microwave Hood Fan, Refrigerator, Washer
Heating	Boiler
Cooling	None
# of Stories	4

Exterior

Exterior Features	Other
Lot Description	Landscaped, Lawn
Roof	Asphalt Shingle
Construction	Brick, Concrete

Additional Information

Date Listed	September 5th, 2025
Days on Market	3
Zoning	RM
HOA Fees	575
HOA Fees Freq.	MON

Listing Details

Listing Office	RE/MAX Grande Prairie
----------------	-----------------------

Data is supplied by Pillar 9â„¢ MLS® System. Pillar 9â„¢ is the owner of the copyright in its MLS® System. Data is deemed reliable but is not guaranteed accurate by Pillar 9â„¢. The trademarks MLS®, Multiple Listing Service® and the associated logos are owned by The Canadian Real Estate Association (CREA) and identify the quality of services provided by real estate professionals who are members of CREA. Used under license.