

\$289,900 - 5305 26 Street Close, Lloydminster

MLS® #A2254267

\$289,900

4 Bedroom, 3.00 Bathroom, 1,118 sqft

Residential on 0.14 Acres

Steele Heights, Lloydminster, Alberta

This family-friendly home is tucked away on a quiet cul-de-sac in a great location near Museum Lake, walking paths, and just a short distance to College Park. Inside, youâ€™ll find fresh paint throughout, 3 bedrooms on the main floor plus an additional bedroom downstairs, and 3 bathrooms to fit a busy household. The attached double garage offers plenty of space and convenience. A solid choice for families looking for comfort and a great neighborhood to call home.

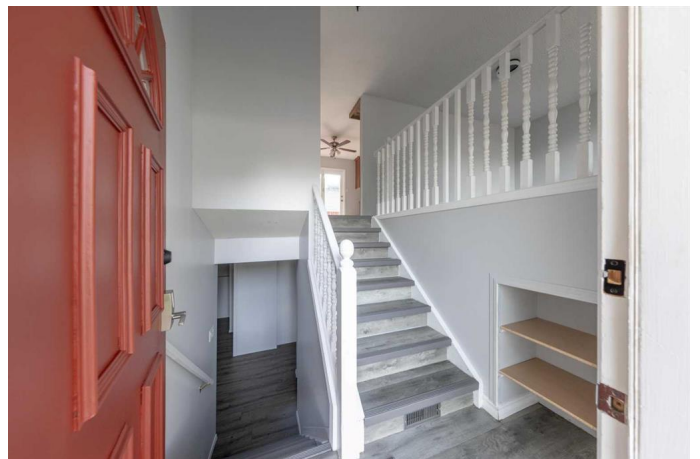
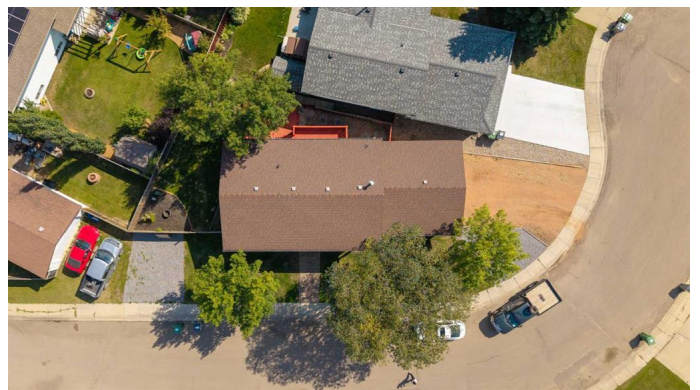
Built in 1985

Essential Information

MLS® #	A2254267
Price	\$289,900
Bedrooms	4
Bathrooms	3.00
Full Baths	3
Square Footage	1,118
Acres	0.14
Year Built	1985
Type	Residential
Sub-Type	Detached
Style	Bi-Level
Status	Active

Community Information

Address	5305 26 Street Close
Subdivision	Steele Heights



City	Lloydminster
County	Lloydminster
Province	Alberta
Postal Code	T9V 2L5

Amenities

Parking Spaces	2
Parking	Double Garage Detached
# of Garages	2

Interior

Interior Features	See Remarks
Appliances	Dishwasher, Microwave Hood Fan
Heating	Forced Air, Natural Gas
Cooling	None
Has Basement	Yes
Basement	Finished, Full

Exterior

Exterior Features	Private Yard
Lot Description	City Lot, Few Trees, Landscaped, Lawn
Roof	Asphalt Shingle
Construction	Wood Frame, Wood Siding
Foundation	Poured Concrete

Additional Information

Date Listed	September 5th, 2025
Days on Market	3
Zoning	R1

Listing Details

Listing Office	RE/MAX OF LLOYDMINSTER
----------------	------------------------

Data is supplied by Pillar 9â„¢ MLS® System. Pillar 9â„¢ is the owner of the copyright in its MLS® System. Data is deemed reliable but is not guaranteed accurate by Pillar 9â„¢. The trademarks MLS®, Multiple Listing Service® and the associated logos are owned by The Canadian Real Estate Association (CREA) and identify the quality of services provided by real estate professionals who are members of CREA. Used under license.