

# \$189,000 - Nw 1/4 Sec 16-42-1-5; Lot 27, Rural Ponoka County

MLS® #A2253768

**\$189,000**

0 Bedroom, 0.00 Bathroom,  
Land on 5.36 Acres

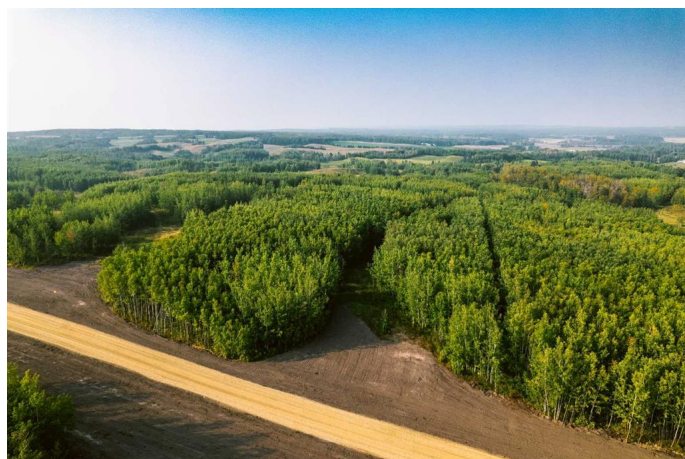
NONE, Rural Ponoka County, Alberta

Check out this 5.36-acre parcel in the new DS Ranch Subdivision, offering abundant space to bring your vision to life. This expansive parcel provides a serene and private setting, ideal for designing a custom estate. With ample room for versatile development, it ensures tranquility while keeping essential amenities within reach. Perfect for buyers seeking sizable space in a premier community, this parcel is a rare find. Embrace the potential of this generously sized property, where substantial acreage and peaceful surroundings create an exceptional opportunity. Power and gas are at the property line, and a new road into the subdivision has recently been added. Whether you envision keeping a horse or simply enjoying the serenity of country living, this property offers it all!

## Essential Information

MLS® #	A2253768
Price	\$189,000
Bathrooms	0.00
Acres	5.36
Type	Land
Sub-Type	Residential Land
Status	Active

## Community Information



Address	Nw 1/4 Sec 16-42-1-5; Lot 27
Subdivision	NONE
City	Rural Ponoka County
County	Ponoka County
Province	Alberta
Postal Code	T0C 2J0

### **Additional Information**

Date Listed	September 2nd, 2025
Days on Market	3
Zoning	CR

### **Listing Details**

Listing Office	RE/MAX real estate central alberta
----------------	------------------------------------

Data is supplied by Pillar 9â„¢ MLSÂ® System. Pillar 9â„¢ is the owner of the copyright in its MLSÂ® System. Data is deemed reliable but is not guaranteed accurate by Pillar 9â„¢. The trademarks MLSÂ®, Multiple Listing ServiceÂ® and the associated logos are owned by The Canadian Real Estate Association (CREA) and identify the quality of services provided by real estate professionals who are members of CREA. Used under license.