

\$420,000 - 14 Rasmussen Place, Standard

MLS® #A2252932

\$420,000

6 Bedroom, 2.00 Bathroom, 1,383 sqft

Residential on 0.20 Acres

NONE, Standard, Alberta

20 minutes to Strathmore – 40 minutes to
Chestermere -56 minutes to Calgary City
Limits East

Discover the perfect blend of small-town
charm and comfortable living in this beautiful
home located in the welcoming village of
Standard, Alberta. (website)
Villageofstandard.ca

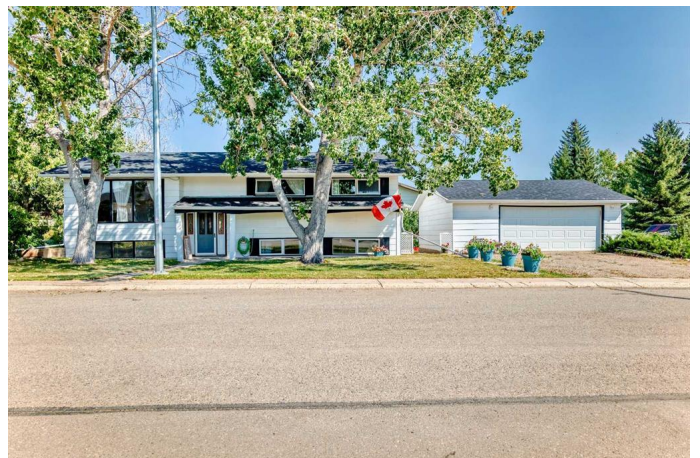
Education – K-12 Wheatland Crossing
School

<https://wheatlandcrossing.ghsd75.ca/home/news>

Country Kids Day Care:
<https://www.countrykidsccs.com>

Family-oriented amenities including a sports
complex, curling rink with restaurant and
lounge attached. Playgrounds, library (after
school activities), Clover Farms Grocery
Store, post office, tennis and volleyball courts.
Standard has a welcome committee for
newcomers so let them know your coming and
receive a gift basket. The Lions and
Lionette™s Clubs sponsor many activities
during the year.

This home offers a large country kitchen with
deck facing East. Five bedrooms and a large
bonus room/Flex Room that can be made into
anything you choose



A spacious living room, three bedrooms upstairs; New windows and full bath.

Fully developed lower level has two bedrooms and a third bonus room, and also a bathroom with tiled shower. The lower level has beautiful thermal windows so there's plenty of light. The media room is perfect for TV, games and recreation. Gas fireplace. There is a cold cellar for beverage storage. Laundry room has plenty of space and washer and dryer are included.

Large double garage. New roof on House and garage. Newer hot water tank and Furnace just inspected!

Whether you're gathering with family, entertaining friends, or simply enjoying the peace and quiet of prairie living, this property provides the space and warmth you've been looking for; wide open skies, safe Streets and a community that makes you feel right at home.

With wide-open skies, safe streets, and a community that makes you feel right at home, Standard is the perfect place to put down roots. Don't miss the chance to make this inviting home "and lifestyle. Oversized Detached Garage. Front Access. 25'X 23'. Morning Sun East Exposure Deck 8'x19

Built in 1974

Essential Information

MLS® #	A2252932
Price	\$420,000
Bedrooms	6
Bathrooms	2.00
Full Baths	2

Square Footage	1,383
Acres	0.20
Year Built	1974
Type	Residential
Sub-Type	Detached
Style	Bi-Level
Status	Active

Community Information

Address	14 Rasmussen Place
Subdivision	NONE
City	Standard
County	Wheatland County
Province	Alberta
Postal Code	T0J 3G0

Amenities

Parking Spaces	2
Parking	Double Garage Detached, Off Street
# of Garages	2

Interior

Interior Features	Ceiling Fan(s)
Appliances	Dishwasher, Garage Control(s), Gas Stove, Refrigerator, Window Coverings
Heating	Forced Air, Natural Gas
Cooling	None
Has Basement	Yes
Basement	Finished, Full

Exterior

Exterior Features	None
Lot Description	Back Yard, Cul-De-Sac, Treed
Roof	Asphalt Shingle
Construction	Wood Frame
Foundation	Poured Concrete

Additional Information

Date Listed	September 8th, 2025
-------------	---------------------

Days on Market	6
Zoning	R1

Listing Details

Listing Office	RE/MAX Landan Real Estate
----------------	---------------------------

Data is supplied by Pillar 9â„¢ MLS® System. Pillar 9â„¢ is the owner of the copyright in its MLS® System. Data is deemed reliable but is not guaranteed accurate by Pillar 9â„¢. The trademarks MLS®, Multiple Listing Service® and the associated logos are owned by The Canadian Real Estate Association (CREA) and identify the quality of services provided by real estate professionals who are members of CREA. Used under license.