

\$750,000 - Rr224 Twp 610, Rural Thorhild County

MLS® #A2252908

\$750,000

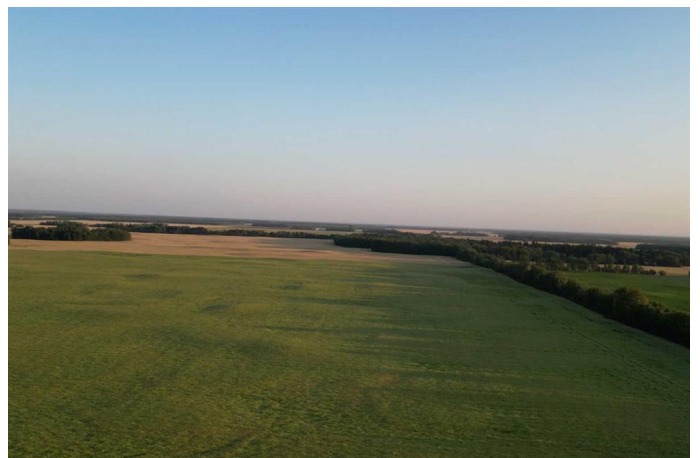
0 Bedroom, 0.00 Bathroom,
Land on 151.60 Acres

NONE, Rural Thorhild County, Alberta

This quarter section offers 151.6 acres of versatile farmland, currently seeded to canola. A small area on the northeast end is currently unused pasture and mature trees.

Along Twp 610, an acreage of 8.28 acres has been subdivided out and is not included in the sale.

With strong crop production and room to grow, this property is well-suited for expanding a farming operation or as a secure land investment in Alberta. Note: This listing is also on the Realtors Association of Edmonton under E4454751.



Essential Information

MLS® #	A2252908
Price	\$750,000
Bathrooms	0.00
Acres	151.60
Type	Land
Sub-Type	Residential Land
Status	Active

Community Information

Address	Rr224 Twp 610
Subdivision	NONE
City	Rural Thorhild County
County	Thorhild County

Province	Alberta
Postal Code	T0A 3J0

Additional Information

Date Listed	August 31st, 2025
Days on Market	2
Zoning	AG

Listing Details

Listing Office	Sotheby's International Realty Canada
----------------	---------------------------------------

Data is supplied by Pillar 9â„¢ MLS® System. Pillar 9â„¢ is the owner of the copyright in its MLS® System. Data is deemed reliable but is not guaranteed accurate by Pillar 9â„¢. The trademarks MLS®, Multiple Listing Service® and the associated logos are owned by The Canadian Real Estate Association (CREA) and identify the quality of services provided by real estate professionals who are members of CREA. Used under license.