

# \$495,000 - 340044 Range Road 215, Rural Starland County

---

MLS® #A2252256

**\$495,000**

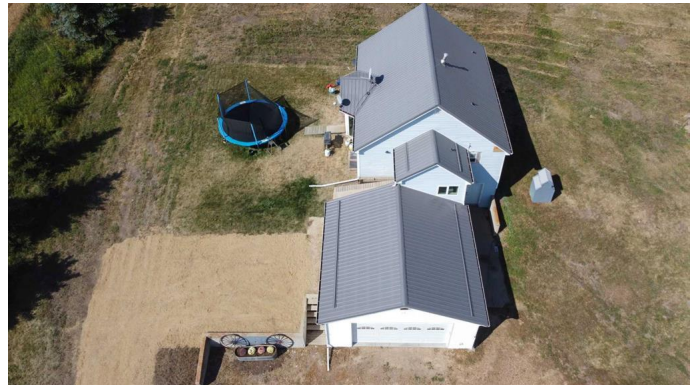
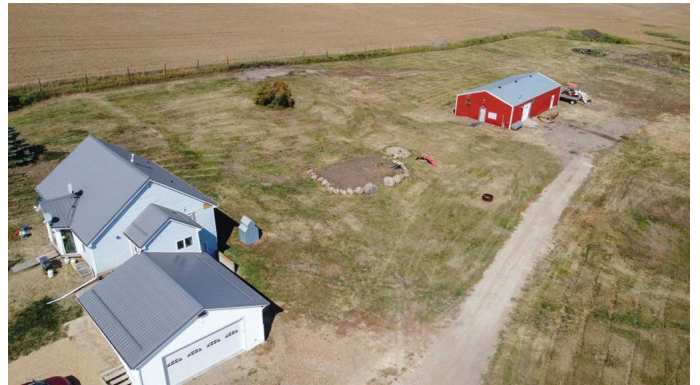
3 Bedroom, 2.00 Bathroom, 1,007 sqft  
Residential on 12.96 Acres

NONE, Rural Starland County, Alberta

Discover the perfect balance of rural living and natural beauty on this almost 13 acre property nestled in the heart of central Alberta. The property features a welcoming bungalow style home with almost 2000 sq ft of living space. On your main floor you have a large country kitchen, good sized bedroom, large flex room, newly renovated four piece bathroom and laundry room with smart washer and dryer. Downstairs offers a newly renovated three piece bathroom, huge family room and two more good sized bedrooms. All windows in the basement were replaced in 2024. You also have two hot water tanks that were replaced in 2024. You also have an oversized double attached garage for those blistery winter days. Outside offers a HUGE heated (2024 heater) shop, and a 4 stall shelter for your animals with six waterers around the property (sold as is). The land area is nice and open. Making it suitable for grazing, gardening or simply taking in the peace and quiet of your surroundings. Make sure to take a short drive down the road to checkout the historic Buffalo Jump. Checkout the virtual tour to see inside the heated shop! Google maps: 51°53'21.9"N 112°57'40.0"W

Built in 1951

## Essential Information



MLS® #	A2252256
Price	\$495,000
Bedrooms	3
Bathrooms	2.00
Full Baths	2
Square Footage	1,007
Acres	12.96
Year Built	1951
Type	Residential
Sub-Type	Detached
Style	Bungalow, Acreage with Residence
Status	Active

### Community Information

Address	340044 Range Road 215
Subdivision	NONE
City	Rural Starland County
County	Starland County
Province	Alberta
Postal Code	T0M2C0

### Amenities

Parking	Double Garage Attached
# of Garages	2

### Interior

Interior Features	See Remarks
Appliances	Dishwasher, Dryer, Electric Stove, Garage Control(s), Microwave, Refrigerator, Washer
Heating	In Floor, Forced Air, Natural Gas, Combination
Cooling	None
Has Basement	Yes
Basement	Exterior Entry, Finished, Full

### Exterior

Exterior Features	Private Yard
Lot Description	Cleared, Pasture, Secluded
Roof	Metal
Construction	Vinyl Siding, Wood Frame

Foundation                Wood

**Additional Information**

Date Listed                August 28th, 2025  
Days on Market        7  
Zoning                      A

**Listing Details**

Listing Office            RE/MAX Complete Realty

Data is supplied by Pillar 9â„¢ MLS® System. Pillar 9â„¢ is the owner of the copyright in its MLS® System. Data is deemed reliable but is not guaranteed accurate by Pillar 9â„¢. The trademarks MLS®, Multiple Listing Service® and the associated logos are owned by The Canadian Real Estate Association (CREA) and identify the quality of services provided by real estate professionals who are members of CREA. Used under license.