

\$484,900 - 116 Vista Close Se, Medicine Hat

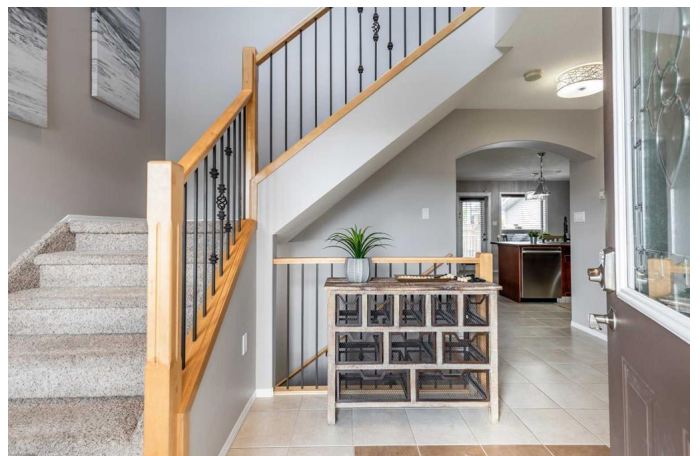
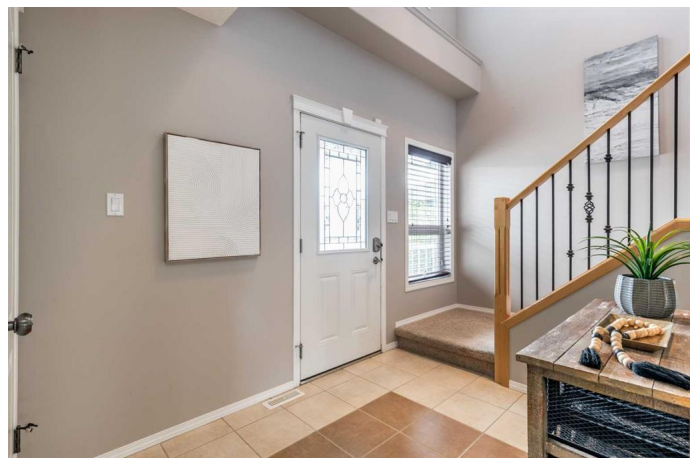
MLS® #A2251993

\$484,900

4 Bedroom, 4.00 Bathroom, 1,662 sqft
Residential on 0.10 Acres

SE Southridge, Medicine Hat, Alberta

Welcome to this spacious 1,610 sq ft two-storey home, tucked away on a quiet, family-friendly street close to schools, parks, and walking paths. With 4 bedrooms, 4 bathrooms, and a 22x24 attached garage, it truly checks all the boxes. Step inside to a welcoming tiled entry that leads into an open-concept main floor. The kitchen offers plenty of maple cabinets and counter space, newer appliances, a central island, and a fantastic walk-through pantry that connects to the mudroom and laundry. The spacious dining area overlooks the backyard, while the living room features maple hardwood floors and a gas fireplace – the perfect spot to gather on chilly evenings. A 2-piece bath and main floor laundry complete this level. Upstairs, you’ll find a spacious primary suite with a walk-in closet and a large 3-piece ensuite complete with a dedicated vanity area. Two additional bedrooms share a 5-piece Jack-and-Jill bathroom, giving everyone their own space. The fully finished basement adds even more living space with a family room, 3-piece bath, fourth bedroom, and plenty of storage. Out back, enjoy a beautifully landscaped yard with underground sprinklers, a low-maintenance fence, shed, and a deck with gas line for the BBQ. There’s also a gazebo making it a true backyard retreat. Recent updates include new shingles (2022), newer paint, and a hot water tank (2018). The attached garage is insulated and heated, making it extra practical year-round. This is a



fantastic home at an awesome price point!!

Built in 2007

Essential Information

MLS® #	A2251993
Price	\$484,900
Bedrooms	4
Bathrooms	4.00
Full Baths	3
Half Baths	1
Square Footage	1,662
Acres	0.10
Year Built	2007
Type	Residential
Sub-Type	Detached
Style	2 Storey
Status	Active

Community Information

Address	116 Vista Close Se
Subdivision	SE Southridge
City	Medicine Hat
County	Medicine Hat
Province	Alberta
Postal Code	T1B0C5

Amenities

Parking Spaces	5
Parking	Double Garage Attached
# of Garages	2

Interior

Interior Features	Kitchen Island
Appliances	Central Air Conditioner, Dishwasher, Garage Control(s), Microwave, Refrigerator, Stove(s), Washer/Dryer, Window Coverings
Heating	Forced Air
Cooling	Central Air
Fireplace	Yes

# of Fireplaces	1
Fireplaces	Gas, Living Room
Has Basement	Yes
Basement	Finished, Full

Exterior

Exterior Features	Private Yard
Lot Description	Back Yard, Underground Sprinklers
Roof	Asphalt Shingle
Construction	Vinyl Siding
Foundation	Poured Concrete

Additional Information

Date Listed	September 2nd, 2025
Days on Market	2
Zoning	R-LD

Listing Details

Listing Office	REAL BROKER
----------------	-------------

Data is supplied by Pillar 9â„¢ MLS® System. Pillar 9â„¢ is the owner of the copyright in its MLS® System. Data is deemed reliable but is not guaranteed accurate by Pillar 9â„¢. The trademarks MLS®, Multiple Listing Service® and the associated logos are owned by The Canadian Real Estate Association (CREA) and identify the quality of services provided by real estate professionals who are members of CREA. Used under license.