

# \$575,000 - 708, 3204 Rideau Place Sw, Calgary

MLS® #A2250758

**\$575,000**

2 Bedroom, 1.00 Bathroom, 963 sqft  
Residential on 0.00 Acres

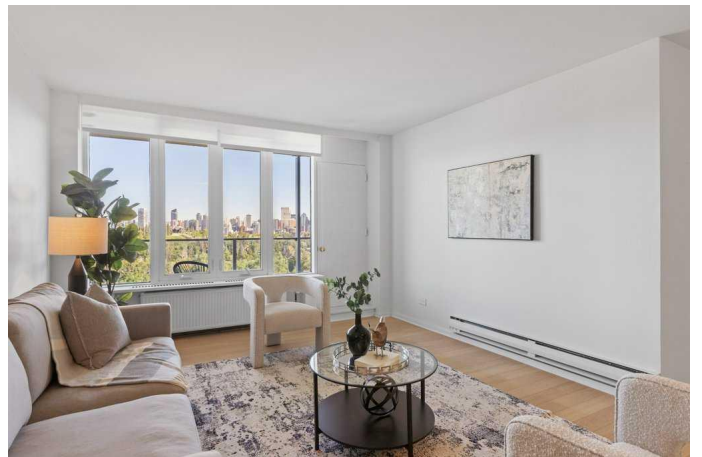
Rideau Park, Calgary, Alberta

Penthouse Living with Unmatched Views | Welcome to Unit 708 in Renfrew House—a rare penthouse offering perched high above Calgary in the prestigious Rideau Park community. This top-floor, 2-bedroom, 1-bathroom residence offers the perfect balance of timeless elegance, everyday functionality, and untapped potential for luxurious customization.

Step inside to a sprawling open-concept living and dining area, bathed in natural light. The space invites both relaxation and entertainment, with seamless access to your private, full-length balcony showcasing uninterrupted panoramic views of the downtown skyline, the river valley, and even the distant Rocky Mountains—a front-row seat to Calgary’s most spectacular sunsets.

The galley-style kitchen is fully functional as-is, yet holds limitless potential. Open it up to create a gourmet showpiece—ideal for hosting gatherings, late-night conversations, or quiet mornings with a view.

The primary bedroom easily accommodates king-sized furnishings and offers tranquil retreat-like comfort. The second bedroom is a versatile space—perfect as a guest room, home office, or creative studio, complete with breathtaking sightlines that make even work-from-home days feel luxurious.



Additional features include secure underground heated parking, a generously sized storage unit, and access to a well-managed, impeccably maintained building with serene green surroundings and a resort-like outdoor pool just steps away.

Located mere minutes from Mission, 4th Street dining, the Elbow River pathways, and downtown Calgary, this penthouse marries the quiet elegance of Rideau Park with the pulse of urban living.

Built in 1955

### **Essential Information**

MLS® #	A2250758
Price	\$575,000
Bedrooms	2
Bathrooms	1.00
Full Baths	1
Square Footage	963
Acres	0.00
Year Built	1955
Type	Residential
Sub-Type	Apartment
Style	Penthouse
Status	Active

### **Community Information**

Address	708, 3204 Rideau Place Sw
Subdivision	Rideau Park
City	Calgary
County	Calgary
Province	Alberta
Postal Code	T2S 1Z2

### **Amenities**

Amenities	Visitor Parking, Outdoor Pool
-----------	-------------------------------

Parking Spaces	1
Parking	Heated Garage, Stall, Parkade, Underground
# of Garages	1

### **Interior**

Interior Features	High Ceilings, No Animal Home, No Smoking Home, Storage
Appliances	Dishwasher, Refrigerator, Window Coverings
Heating	Natural Gas, Hot Water
Cooling	None
# of Stories	7

### **Exterior**

Exterior Features	Balcony
Construction	Brick, Concrete, Wood Siding

### **Additional Information**

Date Listed	August 22nd, 2025
Days on Market	50
Zoning	M-H2

### **Listing Details**

Listing Office	Century 21 Bamber Realty LTD.
----------------	-------------------------------

Data is supplied by Pillar 9â„¢ MLSÂ® System. Pillar 9â„¢ is the owner of the copyright in its MLSÂ® System. Data is deemed reliable but is not guaranteed accurate by Pillar 9â„¢. The trademarks MLSÂ®, Multiple Listing ServiceÂ® and the associated logos are owned by The Canadian Real Estate Association (CREA) and identify the quality of services provided by real estate professionals who are members of CREA. Used under license.