

# \$959,000 - 1206 Pacific Circle W, Lethbridge

MLS® #A2250734

**\$959,000**

5 Bedroom, 4.00 Bathroom, 2,557 sqft  
Residential on 0.21 Acres

Garry Station, Lethbridge, Alberta

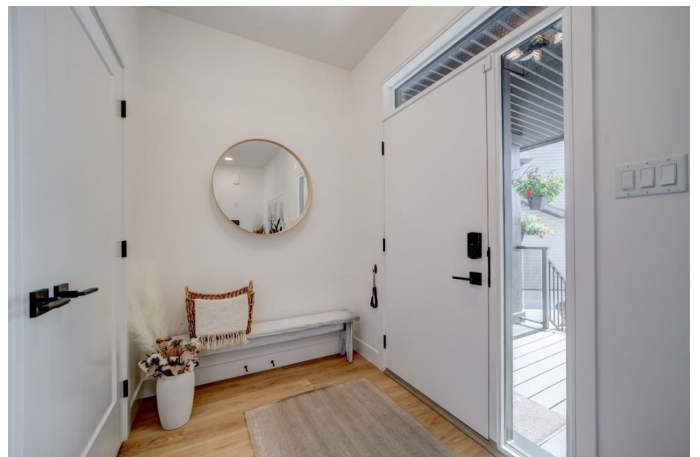
This custom-built Stranville home truly embodies luxury and functionality. The four bedrooms on the second floor offer privacy, with the primary suite featuring an exquisite en-suite bathroom that rivals high-end spas—think soaking tub, walk-in shower, and elegant finishes that create a serene atmosphere.

The layout of the home is designed for both relaxation and entertaining. The expansive main floor includes a stylish living area with vaulted ceilings and those impressive floor-to-ceiling windows, allowing natural light to flood the space and providing beautiful views of the surrounding landscape.

The chef's kitchen is a highlight, featuring a large central island that's perfect for meal prep or casual dining. The high-end white appliances not only elevate the aesthetic but also promise top-notch performance for all your culinary endeavors.

The full walkout basement adds significant versatility, seamlessly blending indoor and outdoor living. The converted gym space is ideal for fitness enthusiasts, while the outdoor hot tub area, enclosed by retractable screens, allows for year-round enjoyment in a private setting.

Trim lights add a touch of elegance to the exterior, enhancing curb appeal and making



the home stand out at night. The triple car garage is a practical addition, providing ample space for vehicles and storage.

With the Control4 smart home system, you can manage various aspects of your home from your smartphone, ensuring convenience and security at your fingertips. Overall, this home is a perfect blend of luxury, technology, and thoughtful design, making it an ideal choice for modern living.

Built in 2020

### **Essential Information**

MLS® #	A2250734
Price	\$959,000
Bedrooms	5
Bathrooms	4.00
Full Baths	3
Half Baths	1
Square Footage	2,557
Acres	0.21
Year Built	2020
Type	Residential
Sub-Type	Detached
Style	Modified Bi-Level
Status	Active

### **Community Information**

Address	1206 Pacific Circle W
Subdivision	Garry Station
City	Lethbridge
County	Lethbridge
Province	Alberta
Postal Code	T1J 5V4

### **Amenities**

Parking Spaces	3
Parking	Triple Garage Attached

# of Garages 3

## Interior

Interior Features Built-in Features, Closet Organizers, Double Vanity, High Ceilings, Kitchen Island, No Animal Home, Pantry, Quartz Counters, Vaulted Ceiling(s), Walk-In Closet(s), Wired for Sound, Smart Home, Wired for Data

Appliances Central Air Conditioner, Dishwasher, Range Hood, Refrigerator, Washer/Dryer, Water Softener, Window Coverings, Built-In Gas Range, Oven-Built-In, Tankless Water Heater

Heating Forced Air, Natural Gas

Cooling Central Air

Fireplace Yes

# of Fireplaces 2

Fireplaces Gas, Living Room, Mantle, Tile, Blower Fan

Has Basement Yes

Basement Finished, Full, Walk-Out

## Exterior

Exterior Features BBQ gas line, Garden, Private Yard

Lot Description Backs on to Park/Green Space, City Lot, Landscaped, Pie Shaped Lot

Roof Asphalt Shingle

Construction Cement Fiber Board, Concrete, Stone

Foundation Poured Concrete

## Additional Information

Date Listed August 21st, 2025

Zoning R-SL

## Listing Details

Listing Office Onyx Realty Ltd.

Data is supplied by Pillar 9â„¢ MLSÂ® System. Pillar 9â„¢ is the owner of the copyright in its MLSÂ® System. Data is deemed reliable but is not guaranteed accurate by Pillar 9â„¢. The trademarks MLSÂ®, Multiple Listing ServiceÂ® and the associated logos are owned by The Canadian Real Estate Association (CREA) and identify the quality of services provided by real estate professionals who are members of CREA. Used under license.