

\$2,549,999 - 129 Glyde Park, Rural Rocky View County

MLS® #A2250199

\$2,549,999

6 Bedroom, 5.00 Bathroom, 4,350 sqft

Residential on 0.28 Acres

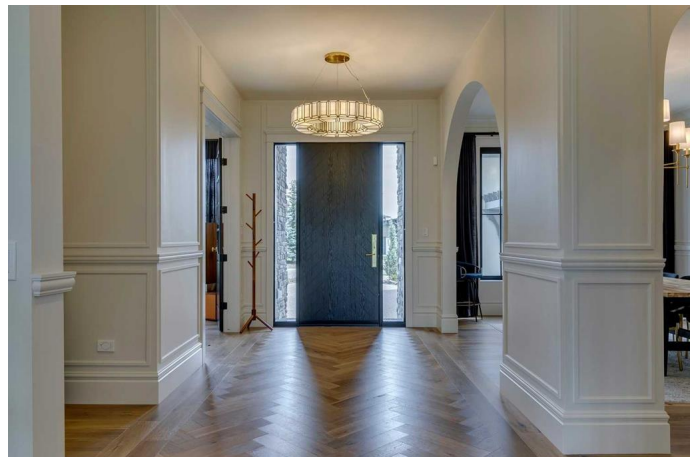
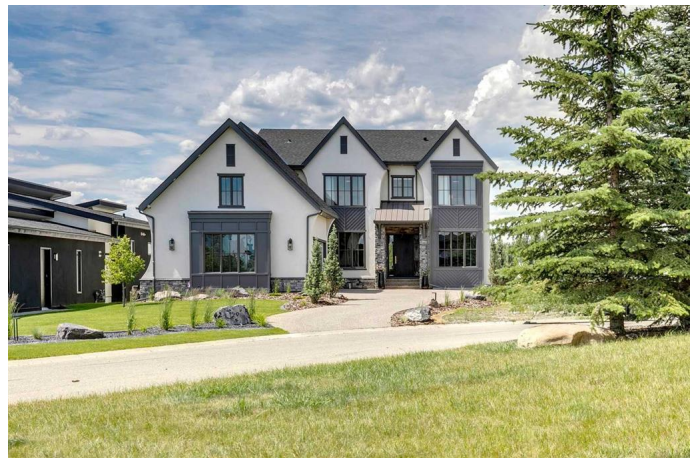
Elbow Valley West, Rural Rocky View County, Alberta

* SEE VIDEO *Welcome to this extraordinary custom-built residence by BILD Award Winner, Urban Indigo Fine Homes. Offering over 6,200 sq. ft. of impeccably designed living space, this one-of-a-kind home combines timeless elegance with modern comfort for the ultimate lifestyle experience. Every detail has been thoughtfully crafted, showcasing exceptional quality and refined finishes throughout.

The main level impresses with soaring 10' ceilings and a bright, open layout that's perfect for both everyday living and entertaining. A formal dining room sets the stage for memorable gatherings, while a private office offers a quiet retreat for work or study. At the heart of the home, the chef-inspired kitchen boasts dual islands, high-end appliances, custom built-ins, and a butler's pantry with a convenient pass-through to the command center—designed to keep busy family life organized.

Upstairs, the primary suite is a true showstopper with vaulted ceilings, a spa-like 5-piece ensuite, and a generous walk-in closet featuring a smart pass-through to the laundry room. Three additional bedrooms and a spacious bonus room make this level ideal for a growing family.

The fully finished lower level is designed for



relaxation and entertainment, complete with a large family room, a wet bar and wine cellar, two additional bedrooms, and a dedicated home gym.

Car enthusiasts will appreciate the oversized, heated triple garage with nearly 12â€™ ceilings, a workshop area, and room to accommodate a car lift.

Outdoors, more than \$150,000 in professional landscaping creates a private retreat with a stone fireplace, expansive patio, irrigation system, putting green, and a 450 sq. ft. west-facing deck to enjoy panoramic mountain views. This remarkable property backs onto green space with a playground, tennis courts, a year-round pond, and beautifully maintained gardens.

Additional upgrades include central air conditioning, a comprehensive security system with cameras, and an \$85,000 custom blinds package with remote-controlled window coverings in key areas.

This home is more than just a residence—it’s a lifestyle. With its timeless design, modern amenities, and breathtaking surroundings, it’s truly a must-see. Book your private showing today.

Built in 2024

Essential Information

MLS® #	A2250199
Price	\$2,549,999
Bedrooms	6
Bathrooms	5.00
Full Baths	4
Half Baths	1
Square Footage	4,350

Acres	0.28
Year Built	2024
Type	Residential
Sub-Type	Detached
Style	2 Storey, Acreage with Residence
Status	Active

Community Information

Address	129 Glyde Park
Subdivision	Elbow Valley West
City	Rural Rocky View County
County	Rocky View County
Province	Alberta
Postal Code	T3Z 0A1

Amenities

Amenities	Other, Park, Picnic Area, Recreation Facilities
Parking Spaces	5
Parking	Concrete Driveway, Heated Garage, Oversized, Triple Garage Attached, Workshop in Garage
# of Garages	3

Interior

Interior Features	Bookcases, Built-in Features, Central Vacuum, Closet Organizers, Double Vanity, High Ceilings, Kitchen Island, Open Floorplan, Recessed Lighting, Soaking Tub, Sump Pump(s), Vaulted Ceiling(s), Walk-In Closet(s), Wet Bar, French Door
Appliances	Dishwasher, Freezer, Gas Range, Humidifier, Microwave, Refrigerator, Washer/Dryer, Window Coverings, Wine Refrigerator
Heating	Forced Air, Natural Gas
Cooling	Central Air
Fireplace	Yes
# of Fireplaces	2
Fireplaces	Gas, Living Room, Outside
Has Basement	Yes
Basement	Finished, Full

Exterior

Exterior Features	BBQ gas line, Lighting, Other, Private Yard
Lot Description	Backs on to Park/Green Space, Cul-De-Sac, Front Yard, Garden,

Landscaped, No Neighbours Behind, See Remarks, Underground Sprinklers

Roof	Asphalt Shingle
Construction	Concrete, Stone, Stucco, Wood Frame
Foundation	Poured Concrete

Additional Information

Date Listed	August 22nd, 2025
Days on Market	1
Zoning	DC

Listing Details

Listing Office	eXp Realty
----------------	------------

Data is supplied by Pillar 9â„¢ MLSÂ® System. Pillar 9â„¢ is the owner of the copyright in its MLSÂ® System. Data is deemed reliable but is not guaranteed accurate by Pillar 9â„¢. The trademarks MLSÂ®, Multiple Listing ServiceÂ® and the associated logos are owned by The Canadian Real Estate Association (CREA) and identify the quality of services provided by real estate professionals who are members of CREA. Used under license.