

# \$169,000 - 248 Lakeshore Drive North, Island Lake

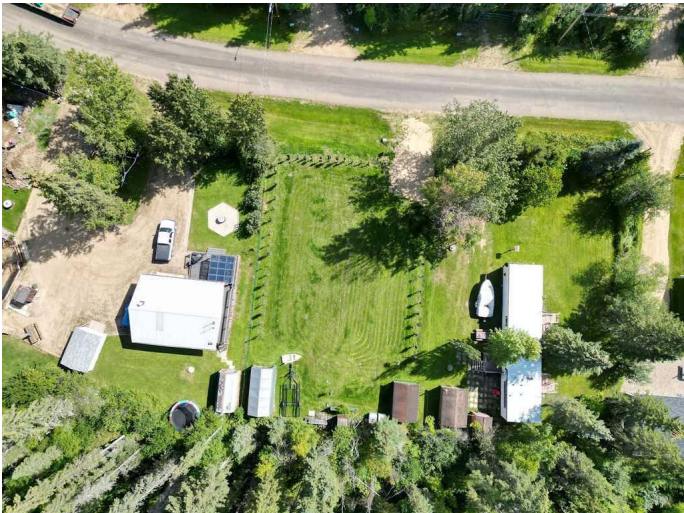
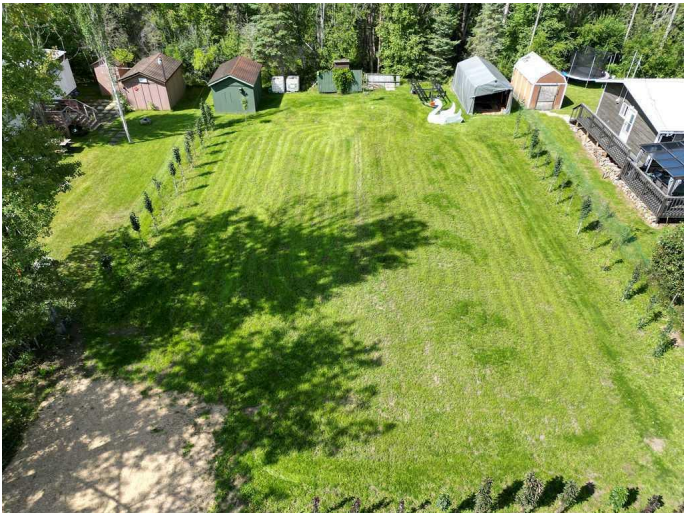
MLS® #A2249663

**\$169,000**

0 Bedroom, 0.00 Bathroom,  
Land on 0.24 Acres

NONE, Island Lake, Alberta

Secluded Lakeback Lot at Island Lake – Ready for Your RV or Cabin! Escape to the lake! This .23 acre cleared and levelled lot at Island Lake is the perfect spot for your recreational getaway or future cabin build. Surrounded by fresh tree plantings for privacy, the lot comes complete with a storage shed and tarp shed for all your gear. Located just down the road from lake access and a boat launch, you™ll have easy access to one of Alberta™s premier lakes – renowned for its exceptional water quality and year-round recreation. Spend your days fishing, boating, kayaking, or exploring the endless ATV and snowmobile trails nearby. Whether you™re looking for a weekend retreat or a place to build lasting memories, this quiet, secluded property is ready for you.



## Essential Information

MLS® #	A2249663
Price	\$169,000
Bathrooms	0.00
Acres	0.24
Type	Land
Sub-Type	Recreational
Status	Active

## Community Information

Address                    248 Lakeshore Drive North

Subdivision	NONE
City	Island Lake
County	Athabasca County
Province	Alberta
Postal Code	T9S1S2

### **Additional Information**

Date Listed	August 19th, 2025
Days on Market	2
Zoning	Residential

### **Listing Details**

Listing Office	ROYAL LEPAGE COUNTY REALTY
----------------	----------------------------

Data is supplied by Pillar 9â„¢ MLS® System. Pillar 9â„¢ is the owner of the copyright in its MLS® System. Data is deemed reliable but is not guaranteed accurate by Pillar 9â„¢. The trademarks MLS®, Multiple Listing Service® and the associated logos are owned by The Canadian Real Estate Association (CREA) and identify the quality of services provided by real estate professionals who are members of CREA. Used under license.