

# \$320,500 - 9101 128 Avenue, Peace River

MLS® #A2249459

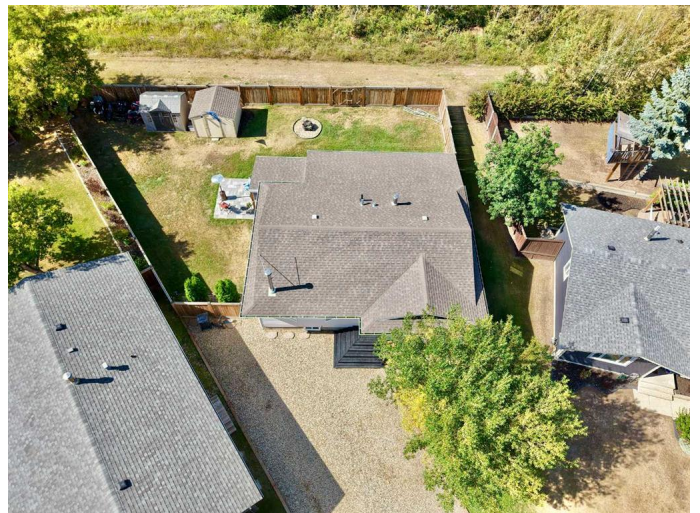
## \$320,500

4 Bedroom, 2.00 Bathroom, 1,128 sqft

Residential on 0.17 Acres

Shaftesbury Estates, Peace River, Alberta

The perfect family home awaits you in Shaftesbury Estates! Tucked away in a quiet cul-de-sac, this beautifully updated property is move-in ready and designed for comfortable living. From the fully fenced yard with its covered deck, to the thoughtful renovations already completed, all that's left to do is move in, unpack, and enjoy. Step inside and you'll immediately notice the brand-new flooring that flows throughout the home, setting the stage for a fresh, modern feel. The heart of the home is the open-concept kitchen and living room, anchored by a gorgeous wood stove that adds warmth and charm year-round. The kitchen is as functional as it is spacious, offering ample cabinet space, a central island for meal prep and gathering, and generous counter space for all your cooking needs. Upstairs, you'll find three comfortable bedrooms and a full bathroom—perfect for a growing family. Downstairs expands your living options with an additional bedroom, a 3/4 bath, a cozy finished rec room, a den for hobbies or a home office, and even a workshop area for projects or extra storage. The backyard is private and peaceful with no neighbors behind, giving you plenty of room to relax or entertain. Whether you're sipping coffee on the covered deck, hosting summer BBQs on the brick patio, or letting kids and pets run free in the fully fenced yard, you'll love the outdoor living this property provides. This home truly checks all the boxes—space, style, updates, and location.



Donâ€™t wait on this oneâ€™call today to schedule your viewing and see why this is such a fantastic opportunity!

Built in 1973

**Essential Information**

MLS® #	A2249459
Price	\$320,500
Bedrooms	4
Bathrooms	2.00
Full Baths	2
Square Footage	1,128
Acres	0.17
Year Built	1973
Type	Residential
Sub-Type	Detached
Style	Bungalow
Status	Active

**Community Information**

Address	9101 128 Avenue
Subdivision	Shaftesbury Estates
City	Peace River
County	Peace No. 135, M.D. of
Province	Alberta
Postal Code	T8S 1W8

**Amenities**

Parking Spaces	5
Parking	Off Street, Parking Pad

**Interior**

Interior Features	Breakfast Bar, Kitchen Island, Laminate Counters, Open Floorplan, Pantry, Storage, Vinyl Windows
Appliances	Dishwasher, Dryer, Electric Stove, Microwave, Refrigerator, Washer, Window Coverings
Heating	Forced Air, Natural Gas
Cooling	None

Fireplace	Yes
# of Fireplaces	1
Fireplaces	Living Room, Wood Burning Stove
Has Basement	Yes
Basement	Finished, Full

## Exterior

Exterior Features	BBQ gas line, Private Entrance, Private Yard, Storage
Lot Description	Back Yard, Few Trees, Front Yard, Landscaped, Lawn, No Neighbours Behind, Pie Shaped Lot, Private
Roof	Asphalt Shingle
Construction	Vinyl Siding, Wood Frame
Foundation	Poured Concrete

## Additional Information

Date Listed	August 18th, 2025
Zoning	R1-A

## Listing Details

Listing Office	RE/MAX Northern Realty
----------------	------------------------

Data is supplied by Pillar 9â„¢ MLS® System. Pillar 9â„¢ is the owner of the copyright in its MLS® System. Data is deemed reliable but is not guaranteed accurate by Pillar 9â„¢. The trademarks MLS®, Multiple Listing Service® and the associated logos are owned by The Canadian Real Estate Association (CREA) and identify the quality of services provided by real estate professionals who are members of CREA. Used under license.