

# \$339,900 - 162 Hampton Close, Penhold

MLS® #A2248764

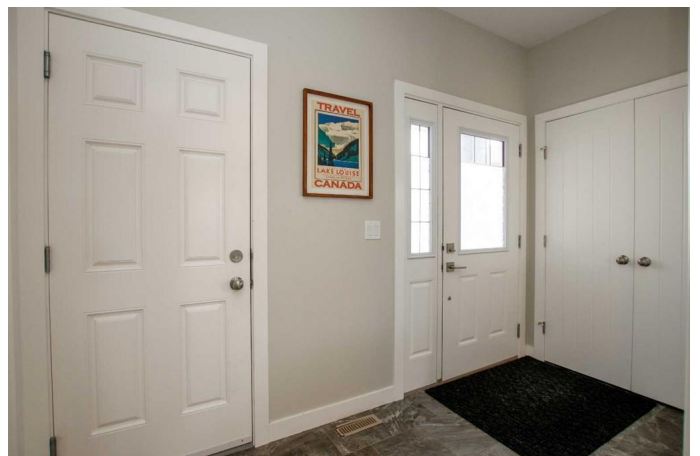
**\$339,900**

3 Bedroom, 3.00 Bathroom, 1,260 sqft

Residential on 0.09 Acres

HawkrIDGE Estates, Penhold, Alberta

IMMEDIATE POSSESSION AVAILABLE ~ 3 BEDROOM 3 BATH 2-STOREY END UNIT TOWNHOME ~ PIE SHAPED LOT W/NO NEIGHBOURS BEHIND ~ CENTRAL AIR CONDITIONING ~ ATTACHED GARAGE ~ Covered front entry welcomes you and leads to a welcoming foyer with a generous size coat closet, with convenient access to the attached garage and 2 piece main floor bathroom ~ The living room has high ceilings, vinyl plank flooring and transom windows for natural light ~ The kitchen offers a functional layout with ample cabinet and counter space, full tile backsplash, window above the sink overlooking the deck and a wall pantry ~ The dining room offers garden door access to the deck with a BBQ gas line, and the backyard ~ The primary bedroom can easily accommodate a king size bed plus multiple pieces of furniture, has a bright 3 piece ensuite with a walk in shower and a walk in closet with built in organizers ~ 2 additional bedrooms are both a generous size with ample closet space ~ 4 piece upper level bathroom ~ The basement has laundry, bathroom plumbing roughed in, in floor heating roughed in and plenty of space for future development ~ 22' L x 11.5' W attached garage is insulated, finished with paint ready drywall and has high ceilings ~ The pie shaped backyard is fully fenced (vinyl) with no neighbours behind, includes a garden shed, fire pit area, still leaving plenty of grassy yard space ~ Steps to the multiplex, high school and soon to open



middle school, walking distance to a shopping plaza with any amenities ~ Easy access to highways and just minutes to Red Deer and Innisfail ~ Immediate possession and move in ready!

Built in 2015

### **Essential Information**

MLS® #	A2248764
Price	\$339,900
Bedrooms	3
Bathrooms	3.00
Full Baths	2
Half Baths	1
Square Footage	1,260
Acres	0.09
Year Built	2015
Type	Residential
Sub-Type	Row/Townhouse
Style	2 Storey
Status	Active

### **Community Information**

Address	162 Hampton Close
Subdivision	HawkrIDGE Estates
City	Penhold
County	Red Deer County
Province	Alberta
Postal Code	T0M 1R0

### **Amenities**

Utilities	Electricity Connected, Natural Gas Connected
Parking Spaces	2
Parking	Front Drive, Garage Door Opener, Garage Faces Front, Insulated, Off Street, Single Garage Attached
# of Garages	1

### **Interior**

Interior Features	Bathroom Rough-in, Closet Organizers, High Ceilings, Laminate Counters, Open Floorplan, Pantry, See Remarks, Storage, Vinyl Windows, Walk-In Closet(s), Chandelier, Recessed Lighting
Appliances	Central Air Conditioner, Dishwasher, Microwave, Refrigerator, See Remarks, Stove(s), Washer/Dryer, Window Coverings
Heating	Forced Air, Natural Gas, In Floor Roughed-In
Cooling	Central Air
Has Basement	Yes
Basement	Full, Unfinished

## Exterior

Exterior Features	BBQ gas line, Other, Private Yard, Storage, Private Entrance
Lot Description	Back Yard, Cul-De-Sac, Front Yard, Landscaped, No Neighbours Behind, Pie Shaped Lot
Roof	Asphalt Shingle
Construction	Vinyl Siding, Wood Frame
Foundation	Poured Concrete

## Additional Information

Date Listed	August 15th, 2025
Days on Market	2
Zoning	R3

## Listing Details

Listing Office	Lime Green Realty Central
----------------	---------------------------

Data is supplied by Pillar 9â„¢ MLS® System. Pillar 9â„¢ is the owner of the copyright in its MLS® System. Data is deemed reliable but is not guaranteed accurate by Pillar 9â„¢. The trademarks MLS®, Multiple Listing Service® and the associated logos are owned by The Canadian Real Estate Association (CREA) and identify the quality of services provided by real estate professionals who are members of CREA. Used under license.