

\$750,000 - Rge Rd 101 Twp Rd 722, Beaverlodge

MLS® #A2248416

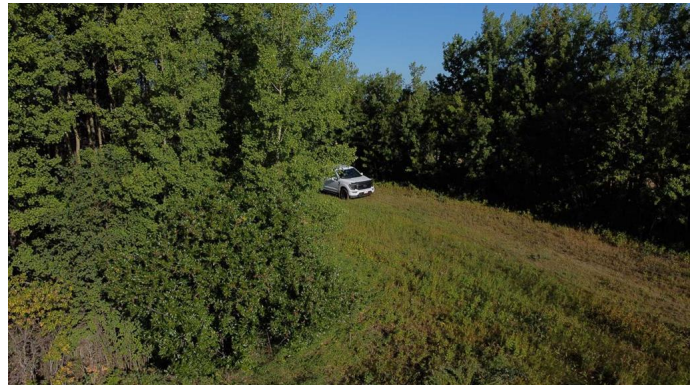
\$750,000

0 Bedroom, 0.00 Bathroom,
Land on 126.08 Acres

NONE, Beaverlodge, Alberta

126 Acres â€“ Stunning Views, Prime Location near Beaverlodge.

Just minutes from the Town of Beaverlodge, this exceptional 126-acre property offers 113 acres of highly productive farmland along with some of the most breathtaking views in the area. From nearly every point on the property, youâ€™ll find yourself surrounded by beauty â€” the west side overlooks the charming town and the Beaverlodge River Valley, stretching all the way to the majestic Rocky Mountains, while the east side opens to picturesque farmland leading toward Saskatoon Mountain. With its ideal location and gently rolling terrain, this property offers endless potential. Whether you envision building your dream home in a setting that feels like a private retreat, or developing a rural subdivision that takes advantage of the panoramic vistas, the possibilities are remarkable. Power and natural gas are close by, adding convenience to your vision. Call your favourite Realtor for a private tour, it must be seen to be appreciated, pictures can't begin to do it justice.



Essential Information

MLS® #	A2248416
Price	\$750,000
Bathrooms	0.00
Acres	126.08
Type	Land

Sub-Type	Commercial Land
Status	Active

Community Information

Address	Rge Rd 101 Twp Rd 722
Subdivision	NONE
City	Beaverlodge
County	Grande Prairie No. 1, County of
Province	Alberta
Postal Code	T0H 0C0

Additional Information

Date Listed	August 14th, 2025
Days on Market	1
Zoning	Ag

Listing Details

Listing Office	RE/MAX Grande Prairie
----------------	-----------------------

Data is supplied by Pillar 9â„¢ MLS® System. Pillar 9â„¢ is the owner of the copyright in its MLS® System. Data is deemed reliable but is not guaranteed accurate by Pillar 9â„¢. The trademarks MLS®, Multiple Listing Service® and the associated logos are owned by The Canadian Real Estate Association (CREA) and identify the quality of services provided by real estate professionals who are members of CREA. Used under license.