

# \$568,700 - 2823 Dover Ridge Drive Se, Calgary

MLS® #A2248258

**\$568,700**

4 Bedroom, 3.00 Bathroom, 1,052 sqft

Residential on 0.12 Acres

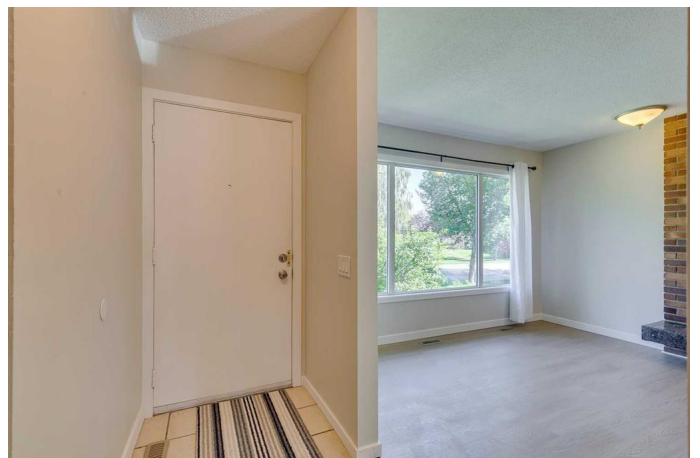
Dover, Calgary, Alberta

Beautifully Updated 4-Bedroom Bungalow – Oversized Heated Garage, South-Facing Yard, and Gated RV Parking

Located just 7 minutes from downtown Calgary, this immaculate bungalow offers a perfect blend of comfort, space, and convenience. Nestled on a wide, quiet street lined with well-maintained homes and ample parking, this property sits on an oversized 52' x 100' lot with a paved back alley. Step inside to a freshly painted main floor with new vinyl plank flooring throughout. The bright and spacious layout features three bedrooms up, including a primary bedroom with a newly updated 2-piece ensuite. The living room sets up nicely as a social gathering area and the dining room will accommodate those large family get togethers. A fourth bedroom is located in the fully developed basement, ideal for guests or additional living space, basement bedroom window does not meet egress.

The basement is an open palette with a clean, painted concrete floor, one big open recreation room + the 4th bedroom and 3 piece bath. There is a cedar wood closet with leads to hidden cold room. The basement is fully finished.

The sunny, south-facing backyard is perfect for gardening enthusiasts, complete with a massive wooden deck and plenty of room to personalize. Enjoy the convenience of a 26' x 24' oversized heated garage, plus gated RV parking for your toys or trailer.



Recent updates include:

New asphalt shingles on house and garage

Renovated 2-piece ensuite

New fixtures and barn door on the main floor

New back storm door and 12' wide RV gate

Updated washer, dryer, and microwave hood fan

Rebuilt section of the back fence.

This is a solid, clean, move-in-ready home  
â€”ideal for families, hobbyists, or investors alike.

Note: One of the owners is a licensed  
REALTOR® with Maxwell Polaris Edmonton.

Built in 1975

**Essential Information**

MLS® #	A2248258
Price	\$568,700
Bedrooms	4
Bathrooms	3.00
Full Baths	2
Half Baths	1
Square Footage	1,052
Acres	0.12
Year Built	1975
Type	Residential
Sub-Type	Detached
Style	Bungalow
Status	Active

**Community Information**

Address                    2823 Dover Ridge Drive Se

Subdivision	Dover
City	Calgary
County	Calgary
Province	Alberta
Postal Code	T2B 2L2

### Amenities

Parking Spaces	3
Parking	Double Garage Detached, Gated, Heated Garage, Insulated, Oversized, RV Access/Parking, RV Gated
# of Garages	2

### Interior

Interior Features	Kitchen Island, Separate Entrance
Appliances	Dishwasher, Dryer, Humidifier, Microwave Hood Fan, Range, Refrigerator, Washer, Window Coverings
Heating	Fireplace(s), Forced Air, Natural Gas, Humidity Control, Mid Efficiency
Cooling	None
Fireplace	Yes
# of Fireplaces	2
Fireplaces	Basement, Living Room, Mantle, Wood Burning
Has Basement	Yes
Basement	Finished, Full

### Exterior

Exterior Features	Private Entrance, Private Yard
Lot Description	Back Lane, Front Yard, Landscaped
Roof	Asphalt Shingle
Construction	Vinyl Siding
Foundation	Poured Concrete

### Additional Information

Date Listed	August 13th, 2025
Days on Market	2
Zoning	R-CG

### Listing Details

Listing Office	CIR Realty
----------------	------------

Data is supplied by Pillar 9â„¢ MLS® System. Pillar 9â„¢ is the owner of the copyright in its MLS® System. Data is deemed reliable but is not guaranteed accurate by Pillar 9â„¢. The trademarks MLS®, Multiple Listing Service® and

the associated logos are owned by The Canadian Real Estate Association (CREA) and identify the quality of services provided by real estate professionals who are members of CREA. Used under license.