

\$687,645 - 7 Heritage Link, Cochrane

MLS® #A2248165

\$687,645

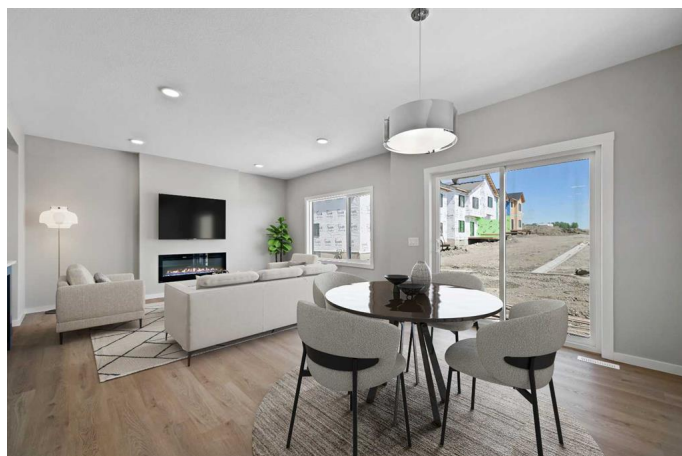
3 Bedroom, 3.00 Bathroom, 2,306 sqft

Residential on 0.08 Acres

NONE, Cochrane, Alberta

The Hadley by Bedrock Homes offers a thoughtfully crafted open-concept layout designed for modern living with west-facing mountain views from the upper floor, perfect for enjoying Alberta's natural beauty. From the moment you step inside, the open-to-above foyer sets an impressive tone, leading to a functional walk-through mudroom and pantry. At the heart of the home, the central kitchen showcases a large island that overlooks a bright great room and dining area, ideally situated at the rear for seamless entertaining and everyday comfort. Upstairs, you'll find a spacious bonus room, two additional bedrooms, and a full bathroom. A striking bridge hallway over the foyer leads to the private primary suite, featuring a luxurious ensuite and a walk-through closet with direct access to the laundry—combining style with smart design. This home also includes a separate entrance to the basement, offering excellent potential for future development.

****Please note: Photos and measurements are of 15 Heritage Link, Cochrane. While the floor plan is identical, finishes, selections, and colours are different.**



Built in 2025

Essential Information

MLS® # A2248165

Price \$687,645

Bedrooms	3
Bathrooms	3.00
Full Baths	2
Half Baths	1
Square Footage	2,306
Acres	0.08
Year Built	2025
Type	Residential
Sub-Type	Detached
Style	2 Storey
Status	Active

Community Information

Address	7 Heritage Link
Subdivision	NONE
City	Cochrane
County	Rocky View County
Province	Alberta
Postal Code	T4C 2J8

Amenities

Parking Spaces	4
Parking	Double Garage Attached, Front Drive
# of Garages	2

Interior

Interior Features	Bathroom Rough-in, Built-in Features, Closet Organizers, Double Vanity, Granite Counters, Kitchen Island, Open Floorplan, Pantry, Separate Entrance, Walk-In Closet(s)
Appliances	Garage Control(s), Range Hood
Heating	Forced Air, Natural Gas
Cooling	None
Fireplace	Yes
# of Fireplaces	1
Fireplaces	Electric, Insert
Has Basement	Yes
Basement	Exterior Entry, Full, Unfinished

Exterior

Exterior Features	Private Entrance
Lot Description	Level
Roof	Asphalt Shingle
Construction	Brick, Vinyl Siding, Wood Frame, Cement Fiber Board
Foundation	Poured Concrete

Additional Information

Date Listed	August 15th, 2025
Days on Market	2
Zoning	R-MX

Listing Details

Listing Office	eXp Realty
----------------	------------

Data is supplied by Pillar 9â„¢ MLS® System. Pillar 9â„¢ is the owner of the copyright in its MLS® System. Data is deemed reliable but is not guaranteed accurate by Pillar 9â„¢. The trademarks MLS®, Multiple Listing Service® and the associated logos are owned by The Canadian Real Estate Association (CREA) and identify the quality of services provided by real estate professionals who are members of CREA. Used under license.