

\$89,000 - #4 On 31b Township, Rural Cardston County

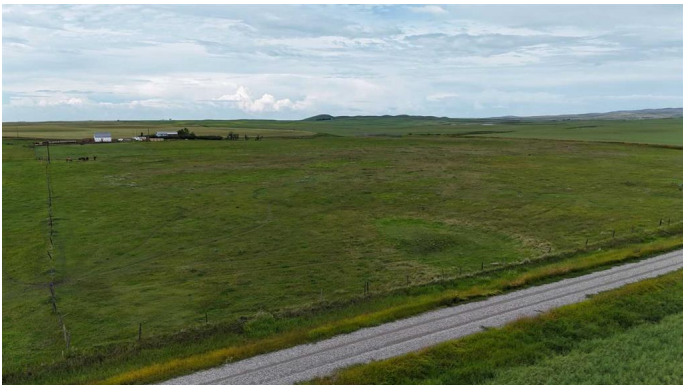
MLS® #A2247911

\$89,000

0 Bedroom, 0.00 Bathroom,
Land on 4.63 Acres

NONE, Rural Cardston County, Alberta

Discover the perfect blend of rural charm and outdoor adventure on this partially fenced 4.63-acre property. Whether you’re dreaming of a horse property, starting a hobby farm, or simply creating a private getaway, this parcel is ready for your vision. Set up your dream home or bring the camper and enjoy peaceful weekends under wide-open skies. Located just minutes from Woolford Park with easy access to the St. Mary’s River, to cool off on a hot summer day or enjoy some great fishing. With plenty of room for animals, gardens, and outdoor living, this property offers the space and freedom you’ve been looking for—all within a short drive from Cardston. Call your favorite realtor today!!



Essential Information

MLS® #	A2247911
Price	\$89,000
Bathrooms	0.00
Acres	4.63
Type	Land
Sub-Type	Residential Land
Status	Active

Community Information

Address	#4 On 31b Township
Subdivision	NONE
City	Rural Cardston County

County	Cardston County
Province	Alberta
Postal Code	T0K 0K0

Additional Information

Date Listed	August 11th, 2025
Days on Market	1
Zoning	Country Residential

Listing Details

Listing Office	SUTTON GROUP - LETHBRIDGE
----------------	---------------------------

Data is supplied by Pillar 9â„¢ MLS® System. Pillar 9â„¢ is the owner of the copyright in its MLS® System. Data is deemed reliable but is not guaranteed accurate by Pillar 9â„¢. The trademarks MLS®, Multiple Listing Service® and the associated logos are owned by The Canadian Real Estate Association (CREA) and identify the quality of services provided by real estate professionals who are members of CREA. Used under license.