

# \$539,900 - 106 Hollman Close, Penhold

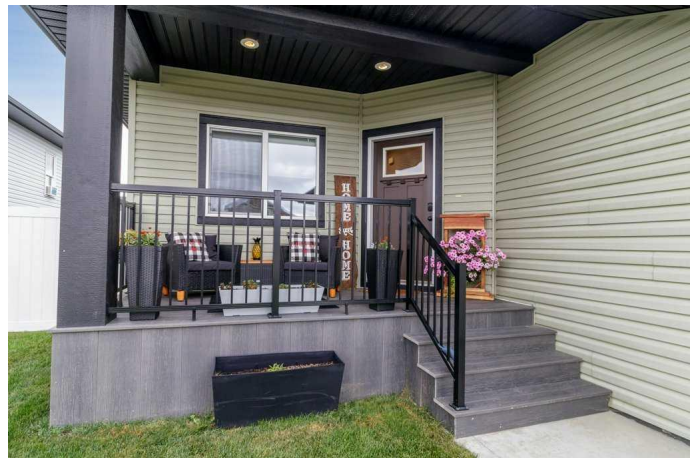
MLS® #A2247615

## \$539,900

5 Bedroom, 3.00 Bathroom, 1,356 sqft  
Residential on 0.15 Acres

Hawkridge Estates, Penhold, Alberta

This 1,363 sq. ft. bungalow offers 2 bedrooms on the main floor, including the primary suite, plus 3 additional bedrooms in the finished basement—all set on a quiet close backing directly onto the walking path. You™ll love the convenience of having the multiplex, high school, grocery store, Tim Hortons, liquor store, medical and dental offices, and more just a short walk away—all while enjoying the charm of small-town living only minutes from Red Deer. The main floor features 10-foot ceilings and two bedrooms, including a spacious primary suite with a walk-in closet and a luxurious 5-piece ensuite complete with dual sinks, a stand-up shower, and a relaxing soaker tub. The second bedroom—perfect as a guest room, office, or flex space—sits at the front of the home with easy access to a full 4-piece bathroom. The open-concept kitchen, dining, and living area is designed for everyday comfort and entertaining, featuring a large island, quartz countertops, a gas stove, stainless steel appliances, a pantry, and a water filtration system. The generous dining space opens to a west-facing 12x20 deck with a privacy fence and gas line for your BBQ, perfect for catching evening sunsets. The living room centers around a Napoleon linear gas fireplace, adding warmth and style. Practical touches include an amazing mudroom with lockers, 2 coat closets and extra storage space off the heated 24x24 garage—complete with 220 power and hot and cold running water. There is main floor



laundry room with washer, dryer, and a convenient wash sink. The east-facing front porch with composite decking and aluminum railing is ideal for enjoying your morning coffee. The fully developed basement adds exceptional living space with laminate flooring throughout, a wet bar with sink and fridge, a cozy family room, one small bedroom plus two generous bedrooms, a 3-piece bathroom, and plenty of storage. The property is fully landscaped and fenced, complete with a dog run and an 8x12 shed for extra storage. Additional upgrades include air conditioning for summer comfort. This home truly combines style, function, and an unbeatable locationâ€”ready for you to move in and enjoy.

Built in 2021

**Essential Information**

MLS® #	A2247615
Price	\$539,900
Bedrooms	5
Bathrooms	3.00
Full Baths	3
Square Footage	1,356
Acres	0.15
Year Built	2021
Type	Residential
Sub-Type	Detached
Style	Bungalow
Status	Active

**Community Information**

Address	106 Hollman Close
Subdivision	Hawkridge Estates
City	Penhold
County	Red Deer County
Province	Alberta
Postal Code	T0M 1R0

## Amenities

Parking Spaces	3
Parking	Concrete Driveway, Double Garage Attached
# of Garages	2

## Interior

Interior Features	Bathroom Rough-in, Closet Organizers, Double Vanity, Kitchen Island, Quartz Counters, Walk-In Closet(s), Wet Bar
Appliances	Central Air Conditioner, Dishwasher, Dryer, Garage Control(s), Microwave, Refrigerator, Stove(s), Washer, Window Coverings
Heating	Forced Air, Natural Gas
Cooling	Central Air
Fireplace	Yes
# of Fireplaces	1
Fireplaces	Gas, Living Room
Has Basement	Yes
Basement	Finished, Full

## Exterior

Exterior Features	Private Yard
Lot Description	Backs on to Park/Green Space, Cul-De-Sac, Interior Lot
Roof	Asphalt Shingle
Construction	Concrete, Vinyl Siding, Wood Frame
Foundation	Poured Concrete

## Additional Information

Date Listed	August 15th, 2025
Zoning	R1

## Listing Details

Listing Office	Royal LePage Network Realty Corp.
----------------	-----------------------------------

Data is supplied by Pillar 9â„¢ MLSÂ® System. Pillar 9â„¢ is the owner of the copyright in its MLSÂ® System. Data is deemed reliable but is not guaranteed accurate by Pillar 9â„¢. The trademarks MLSÂ®, Multiple Listing ServiceÂ® and the associated logos are owned by The Canadian Real Estate Association (CREA) and identify the quality of services provided by real estate professionals who are members of CREA. Used under license.