

# \$137,500 - 25 Riverside Drive E, Drumheller

MLS® #A2247263

**\$137,500**

2 Bedroom, 1.00 Bathroom, 774 sqft

Residential on 0.07 Acres

Downtown Drumheller, Drumheller, Alberta

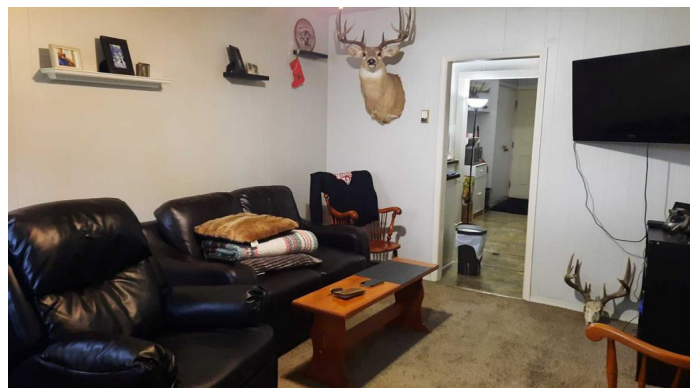
Location, Location, Location ! Just steps from the Badlands Community Facility , library, Splash park, Hockey Arena, Worlds Largest Dinosaur and the valleys walking/Bike Trails, Theatre, Restaurants and Downtown Drumheller. With off street parking and fenced landscaped yard. and front porch. Inside the Home 2 nice sized bedrooms, 4pc bathroom, main floor laundry and Kitchen with dining area. While this home is very fit for habitation It is priced well to allow your personal touches.

With the Downtown Transitional Zoning To support an active, thriving, mixed-use downtown with high quality public spaces, successful businesses, pedestrian connectivity, and street-level activity. Development is characterized by a larger scale of mixed-use buildings than is possible elsewhere in the Valley. 24hrs Notice to view and subject to tenancy for possession (3Months)

Built in 1920

## Essential Information

MLS® #	A2247263
Price	\$137,500
Bedrooms	2
Bathrooms	1.00
Full Baths	1
Square Footage	774
Acres	0.07



Year Built	1920
Type	Residential
Sub-Type	Detached
Style	Bungalow
Status	Active

### Community Information

Address	25 Riverside Drive E
Subdivision	Downtown Drumheller
City	Drumheller
County	Drumheller
Province	Alberta
Postal Code	T0J0Y4

### Amenities

Parking Spaces	1
Parking	Off Street

### Interior

Interior Features	No Animal Home, No Smoking Home
Appliances	Electric Stove, Refrigerator, Washer/Dryer
Heating	Forced Air, Natural Gas
Cooling	None
Has Basement	Yes
Basement	Crawl Space, Partial

### Exterior

Exterior Features	Other
Lot Description	Back Lane, Back Yard, Landscaped
Roof	Asphalt Shingle
Construction	Mixed
Foundation	Other

### Additional Information

Date Listed	August 8th, 2025
Days on Market	1
Zoning	DT

### Listing Details

Data is supplied by Pillar 9â„¢ MLSÂ® System. Pillar 9â„¢ is the owner of the copyright in its MLSÂ® System. Data is deemed reliable but is not guaranteed accurate by Pillar 9â„¢. The trademarks MLSÂ®, Multiple Listing ServiceÂ® and the associated logos are owned by The Canadian Real Estate Association (CREA) and identify the quality of services provided by real estate professionals who are members of CREA. Used under license.