

\$589,000 - 421016 Range Road 271, Rural Ponoka County

MLS® #A2247187

\$589,000

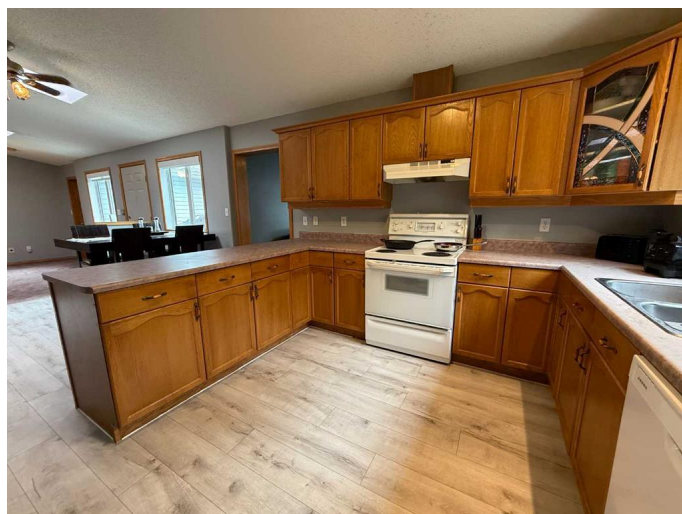
5 Bedroom, 4.00 Bathroom, 1,684 sqft
Residential on 4.00 Acres

NONE, Rural Ponoka County, Alberta

Nestled on a beautifully treed and landscaped parcel, this private acreage offers a serene country opportunity outside of any subdivision, just 15 minutes to Ponoka, Lacombe, and Rimbey, and only minutes to Gull Lake and Crestomere. Set well back from the road and surrounded by mature trees, the property is situated in natural surroundings, complete with groomed trails, raspberry bushes, and exceptional privacy.

Inside, the spacious and versatile floor plan features 5 bedrooms and 3.5 bathrooms—perfect for larger families or those who appreciate room to spread out. The main level offers a bright kitchen with a brand-new dishwasher, an adjoining dining area, and two inviting living rooms. From the dining room, step out onto the front deck—an ideal spot for morning coffee or a relaxing evening wind-down. Two bedrooms are located on this level, including the primary bedroom with its own ensuite. Recent updates include new flooring, fresh paint in select areas, and all plumbing lines replaced. The partially finished lower level provides a generous open space currently used as a home gym and games room, two additional bedrooms, a 4-piece bathroom, and the added convenience of a second laundry area. Ample storage can be found in both the laundry and furnace rooms.

Outdoor living is a highlight, with two decks



perfect for entertaining or simply soaking in the peaceful surroundings. The grounds are thoughtfully maintained, featuring a large garden plot for the avid gardener, two outdoor water outlets for garden watering or animals, a 24â€™ x 25â€™ shop for storage or projects, and even a chicken coop.

This is a rare opportunity to enjoy both space and seclusion in a truly beautiful acreage setting.

Built in 1997

Essential Information

MLS® #	A2247187
Price	\$589,000
Bedrooms	5
Bathrooms	4.00
Full Baths	3
Half Baths	1
Square Footage	1,684
Acres	4.00
Year Built	1997
Type	Residential
Sub-Type	Detached
Style	Acreage with Residence, Bungalow
Status	Active

Community Information

Address	421016 Range Road 271
Subdivision	NONE
City	Rural Ponoka County
County	Ponoka County
Province	Alberta
Postal Code	T4L 2N1

Amenities

Parking	None
---------	------

Interior

Interior Features	See Remarks
Appliances	Dishwasher, Dryer, Microwave, Refrigerator, Stove(s), Washer
Heating	Forced Air
Cooling	None
Has Basement	Yes
Basement	Full, Partially Finished

Exterior

Exterior Features	Garden, Private Yard
Lot Description	See Remarks
Roof	Asphalt Shingle
Construction	Wood Frame
Foundation	Poured Concrete

Additional Information

Date Listed	August 13th, 2025
Days on Market	2
Zoning	CR

Listing Details

Listing Office	RE/MAX real estate central alberta
----------------	------------------------------------

Data is supplied by Pillar 9â„¢ MLS® System. Pillar 9â„¢ is the owner of the copyright in its MLS® System. Data is deemed reliable but is not guaranteed accurate by Pillar 9â„¢. The trademarks MLS®, Multiple Listing Service® and the associated logos are owned by The Canadian Real Estate Association (CREA) and identify the quality of services provided by real estate professionals who are members of CREA. Used under license.