

# \$314,900 - 110 Savanna Walk Ne, Calgary

MLS® #A2247157

**\$314,900**

2 Bedroom, 1.00 Bathroom, 631 sqft

Residential on 0.00 Acres

Saddle Ridge, Calgary, Alberta

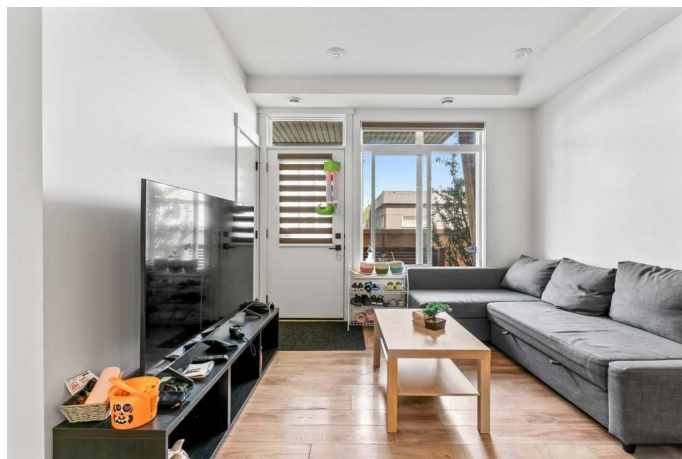
This bright, contemporary 2-bedroom townhome combines style, comfort, and functionality in a smart open-concept design. Upscale finishes, and oversized windows with 9-foot ceilings create a light-filled, inviting space. The kitchen is a chef's delight, featuring quartz countertops, soft-close cabinetry, stainless steel appliances, and a generous pantry. Charm and practicality to the home's design. Nestled in the vibrant and growing Saddle Ridge neighborhood, this home offers unmatched convenience. You'll be just minutes from parks, playgrounds, schools, and the popular Genesis Centre, which boasts fitness facilities, sports fields, a library, and year-round community events. Shopping is close at hand, with plazas offering grocery stores, restaurants, and essential services. Excellent transit options, including an LRT station, along with quick access to Stoney Trail and Metis Trail, make commuting a breeze. Located in a well-maintained complex with low condo fees and a healthy reserve fund, this property is ideal for first-time buyers and savvy investors alike. With its prime location and quality features, it offers both comfort and peace of mind.

Built in 2018

## Essential Information

MLS® #

A2247157



Price	\$314,900
Bedrooms	2
Bathrooms	1.00
Full Baths	1
Square Footage	631
Acres	0.00
Year Built	2018
Type	Residential
Sub-Type	Row/Townhouse
Style	2 Storey
Status	Active

### Community Information

Address	110 Savanna Walk Ne
Subdivision	Saddle Ridge
City	Calgary
County	Calgary
Province	Alberta
Postal Code	T3J 0Y2

### Amenities

Amenities	Parking, Playground
Parking Spaces	1
Parking	Single Garage Attached
# of Garages	1

### Interior

Interior Features	Open Floorplan, Quartz Counters
Appliances	Dishwasher, Electric Range, Range Hood, Refrigerator, Washer/Dryer
Heating	Forced Air
Cooling	None
Basement	None

### Exterior

Exterior Features	Courtyard, Playground
Lot Description	City Lot, Corner Lot, Few Trees, Landscaped
Roof	Shingle
Construction	Vinyl Siding, Wood Frame
Foundation	Poured Concrete

## Additional Information

Date Listed	August 8th, 2025
Days on Market	3
Zoning	M-1 d100

## Listing Details

Listing Office	Royal LePage Mission Real Estate
----------------	----------------------------------

Data is supplied by Pillar 9â„¢ MLS® System. Pillar 9â„¢ is the owner of the copyright in its MLS® System. Data is deemed reliable but is not guaranteed accurate by Pillar 9â„¢. The trademarks MLS®, Multiple Listing Service® and the associated logos are owned by The Canadian Real Estate Association (CREA) and identify the quality of services provided by real estate professionals who are members of CREA. Used under license.