

# \$1,474,900 - 249 Eaton Terrace, Rural Rocky View County

---

MLS® #A2247156

**\$1,474,900**

5 Bedroom, 5.00 Bathroom, 3,643 sqft  
Residential on 0.19 Acres

Cambridge Park, Rural Rocky View County,  
Alberta

Welcome to the brand new development of Knightsbridge in Cambridge Park. Minutes away from access to Stoney Trail and East Hills shopping centre. The EVERLY is a stunning estate home designed to blend luxury and practicality. Set on a generous 8208 sq ft lot, this home provides an expansive backyard and a side-drive FOUR car garage. These are not your typical cookie cutter homes. With 3,643 sq ft. of living space, this custom-built masterpiece features 5 spacious bedrooms and 4.5 beautifully designed bathrooms, offering ample room for family and guests. This home is loaded with upgrades including: Main floor full ensuite bath as well as an added powder room, ensuite bathrooms upstairs for added convenience, high ceilings & a Spice kitchen to enhance your culinary experiences. Inside, the main floor exudes elegance with rich hardwood flooring and 9 ft ceilings with 8 ft doors, and striking black-framed windows that invite natural light. The gourmet kitchen is a chef's dream, complete with an oversized island, a secondary spice kitchen, sleek stainless steel appliances. An open concept formal dining and living area set the stage for gatherings. The main floor also includes a separate flex room that can be perfect for a home office or a prayer room. The main floor also feature a spacious bedroom along with a 4 pc ensuite



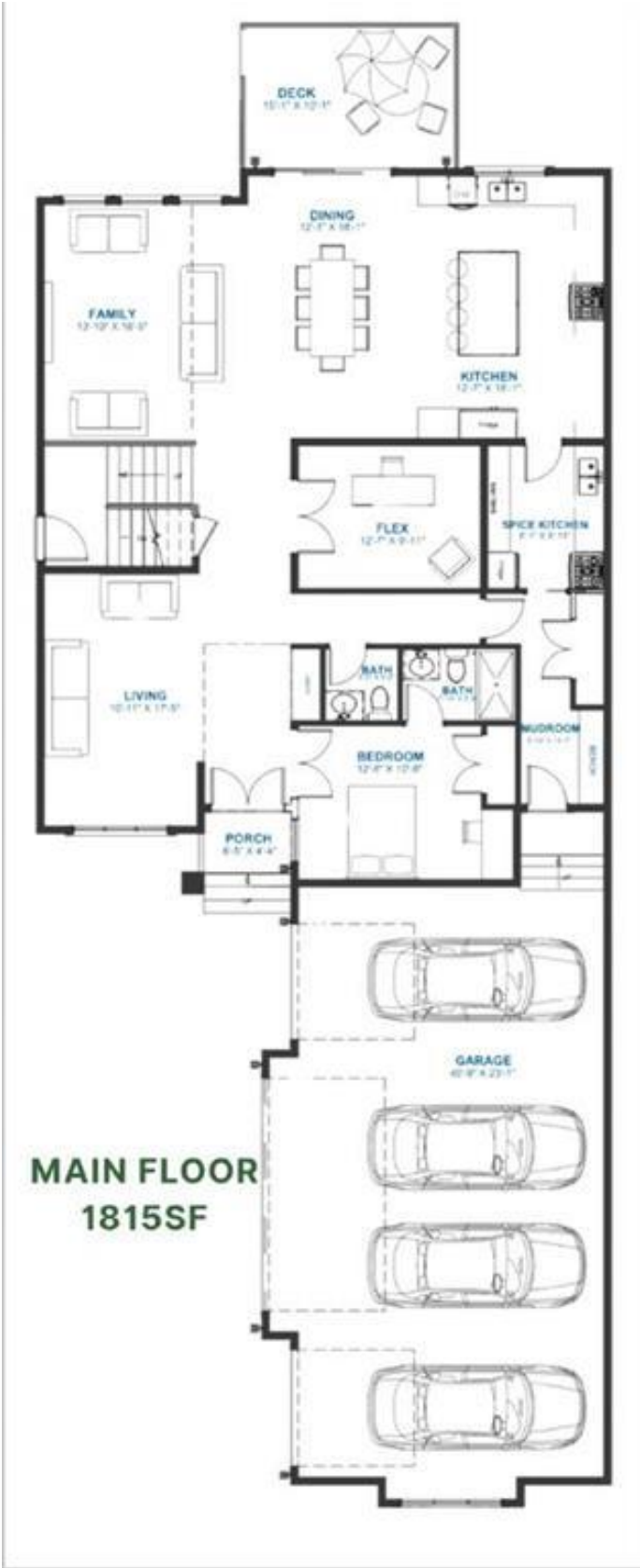
bathroom, perfect for multigenerational living. The primary suite on the upper floor is a true sanctuary with a freestanding tub and a custom-built closet. The home's thoughtful design continues with 3 more generous sized bedrooms on the second floor, a bonus room for entertaining, ensuite bathrooms for convenience, as well as a second floor laundry room. Step outside to enjoy a completed rear deck with steps leading to a private outdoor oasis. This home also offers a 4 car attached garage allowing plenty of space for extra parking. This community is within minutes to Calgary, Chestermere, and East Hills, 18 minutes to Downtown Calgary, and provides quick access to Stoney Trail, Highway 1, and McKnight Blvd making it easy to get anywhere in and around the city. Located near shopping centres, public and private schools, Khalsa school's, parks, and many other amenities, while still offering quiet country-living with wide open green spaces, walking paths and playgrounds.

Built in 2026

**Essential Information**

MLS® #	A2247156
Price	\$1,474,900
Bedrooms	5
Bathrooms	5.00
Full Baths	4
Half Baths	1
Square Footage	3,643
Acres	0.19
Year Built	2026
Type	Residential
Sub-Type	Detached
Style	2 Storey
Status	Active

**Community Information**



Address 249 Eaton Terrace  
Subdivision Cambridge Park  
City Rural Rocky View County  
County Rocky View County  
Province Alberta  
Postal Code T1Z 0A1

**Amenities**

Amenities Other  
Parking Spaces 8  
Parking Driveway, Oversized, Quad c  
# of Garages 4

**Interior**

Interior Features Built-in Features, Open Floor  
Appliances Dishwasher, Gas Range, Mic  
Heating Forced Air, Natural Gas  
Cooling None  
Fireplace Yes  
# of Fireplaces 1  
Fireplaces Gas  
Has Basement Yes  
Basement Full, Unfinished

**Exterior**

Exterior Features Other  
Lot Description Level, Rectangular Lot, Stree  
Roof Asphalt Shingle  
Construction Cement Fiber Board, Concre  
Foundation Poured Concrete

**Additional Information**

Date Listed August 8th, 2025  
Zoning R-1  
HOA Fees 100  
HOA Fees Freq. MON

**Listing Details**

Listing Office CIR Realty



**UPPER FLOOR**  
**1828SF**

Data is supplied by Pillar 9â„¢ MLS® System. Pillar 9â„¢ is the owner of the copyright in its MLS® System. Data is deemed reliable but is not guaranteed accurate by Pillar 9â„¢. The trademarks MLS®, Multiple Listing Service® and the associated logos are owned by The Canadian Real Estate Association (CREA) and identify the quality of services provided by real estate professionals who are members of CREA. Used under license.