

# \$559,000 - 40 Storrs Crescent Se, Medicine Hat

MLS® #A2246608

**\$559,000**

5 Bedroom, 3.00 Bathroom, 1,232 sqft  
Residential on 0.18 Acres

SE Southridge, Medicine Hat, Alberta

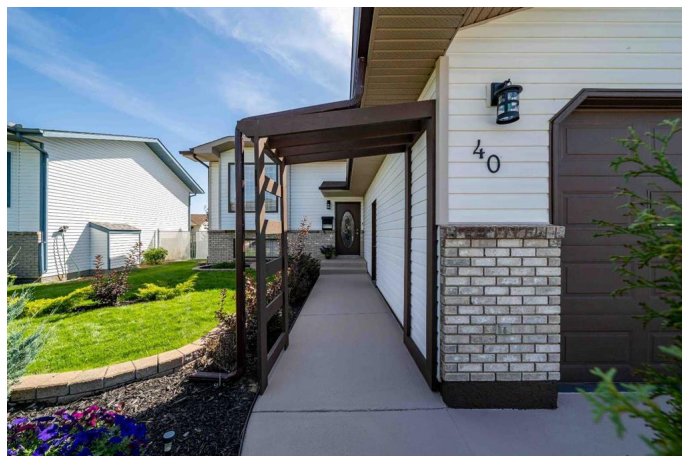
Welcome to this. IMMACULATE home. This 5 bedroom, 3 bath home has been totally renovated (approx \$60,000 with) With a total of 2,300 sq. ft. of living space, this home is move in ready. Upgrades include the following.

New granite counter tops with glass tile backsplash, newer stainless steel appliances, all newer fixtures and lights, new Lux flooring, new front door and lights, painted oak cabinets, family room with a gas fireplace and wet bar (referred to as other room in room measurements). Outside improvements include a 45 ft. paved RV parking pad, fully landscaped yard with numerous trees and shrubs, a large deck with privacy louvers, as well as a spacious 22" x 24" garage wired for electric heat. The home has been recently totally repainted. This home is a pleasure to view. Contact your realtor today and come and see for yourself.

Built in 1998

## Essential Information

MLS® #	A2246608
Price	\$559,000
Bedrooms	5
Bathrooms	3.00
Full Baths	3
Square Footage	1,232
Acres	0.18



Year Built	1998
Type	Residential
Sub-Type	Detached
Style	Bungalow
Status	Active

### Community Information

Address	40 Storrs Crescent Se
Subdivision	SE Southridge
City	Medicine Hat
County	Medicine Hat
Province	Alberta
Postal Code	T1B4J3

### Amenities

Parking Spaces	4
Parking	Double Garage Attached, Off Street, RV Access/Parking
# of Garages	2

### Interior

Interior Features	Bar, Central Vacuum
Appliances	Central Air Conditioner, Dishwasher, Electric Range, Garage Control(s), Gas Water Heater, Microwave, Washer/Dryer, Wine Refrigerator
Heating	Forced Air, Natural Gas
Cooling	Central Air
Fireplace	Yes
# of Fireplaces	1
Fireplaces	Basement, Gas
Has Basement	Yes
Basement	Finished, Full

### Exterior

Exterior Features	Fire Pit
Lot Description	Back Lane, Back Yard, Front Yard, Fruit Trees/Shrub(s), Landscaped, Underground Sprinklers
Roof	Asphalt Shingle
Construction	Brick, Vinyl Siding
Foundation	Poured Concrete

### Additional Information

Date Listed	August 7th, 2025
Zoning	R-LD

## **Listing Details**

Listing Office	ROYAL LEPAGE COMMUNITY REALTY
----------------	-------------------------------

Data is supplied by Pillar 9â„¢ MLS® System. Pillar 9â„¢ is the owner of the copyright in its MLS® System. Data is deemed reliable but is not guaranteed accurate by Pillar 9â„¢. The trademarks MLS®, Multiple Listing Service® and the associated logos are owned by The Canadian Real Estate Association (CREA) and identify the quality of services provided by real estate professionals who are members of CREA. Used under license.