

\$379,900 - 262 Lettice Perry Road N, Lethbridge

MLS® #A2246341

\$379,900

2 Bedroom, 2.00 Bathroom, 1,003 sqft

Residential on 0.11 Acres

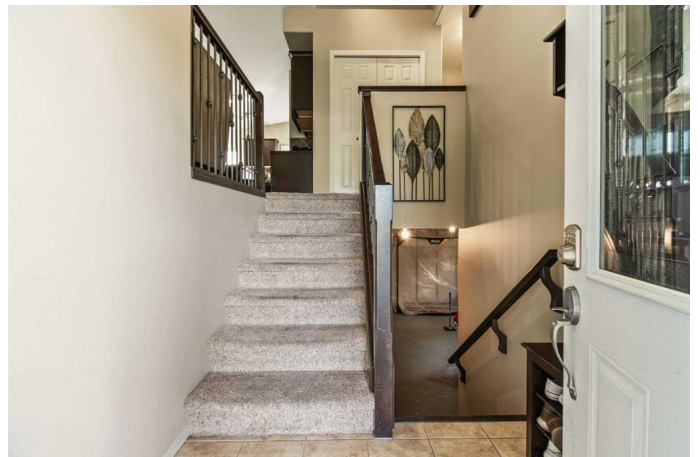
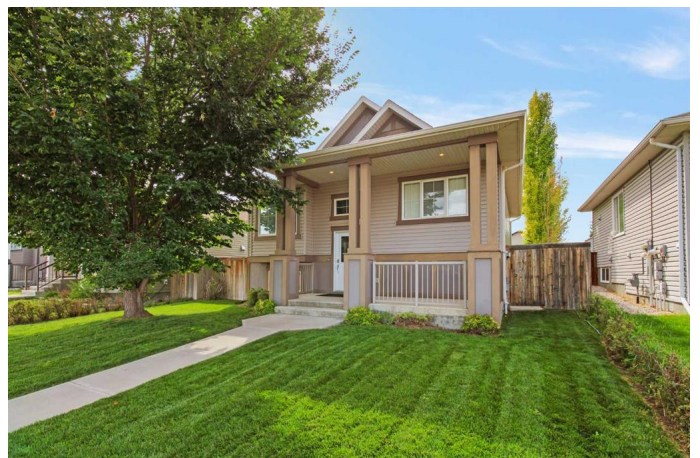
Legacy Ridge / Hardieville, Lethbridge, Alberta

Welcome to 262 Lettice Perry Road N! A Charming Bi-level located in the desirable community of Legacy Ridge! This well-maintained property features two spacious bedrooms, including a primary suite complete with 3-piece ensuite and walk-in closet. The bright and open main floor offers great flow and functionality, while the unfinished basement provides endless potential to create the space of your dreams. Outside, you'll find a fully fenced backyard, perfect for pets, kids, or entertaining. Ideally situated just steps from beautiful parks, walking paths, and an elementary school, this home offers both comfort and convenience. Don't miss this fantastic opportunity, Contact your favourite REALTOR® today!

Built in 2010

Essential Information

MLS® #	A2246341
Price	\$379,900
Bedrooms	2
Bathrooms	2.00
Full Baths	2
Square Footage	1,003
Acres	0.11
Year Built	2010
Type	Residential
Sub-Type	Detached



Style	Bi-Level
Status	Active

Community Information

Address	262 Lettice Perry Road N
Subdivision	Legacy Ridge / Hardieville
City	Lethbridge
County	Lethbridge
Province	Alberta
Postal Code	T1H 5T1

Amenities

Parking Spaces	2
Parking	On Street, Parking Pad

Interior

Interior Features	Breakfast Bar, Open Floorplan, Storage, Walk-In Closet(s)
Appliances	Dishwasher, Dryer, Microwave, Refrigerator, Stove(s), Washer, Window Coverings
Heating	Forced Air
Cooling	Central Air
Has Basement	Yes
Basement	Full, Partially Finished

Exterior

Exterior Features	Private Yard, Storage
Lot Description	Back Lane, Back Yard, Front Yard, Interior Lot, Landscaped, Lawn, Street Lighting
Roof	Asphalt Shingle
Construction	Wood Frame
Foundation	Poured Concrete

Additional Information

Date Listed	August 8th, 2025
Zoning	R-SL

Listing Details

Listing Office	Onyx Realty Ltd.
----------------	------------------

Data is supplied by Pillar 9â„¢ MLSÂ® System. Pillar 9â„¢ is the owner of the copyright in its MLSÂ® System. Data is deemed reliable but is not guaranteed accurate by Pillar 9â„¢. The trademarks MLSÂ®, Multiple Listing ServiceÂ® and

the associated logos are owned by The Canadian Real Estate Association (CREA) and identify the quality of services provided by real estate professionals who are members of CREA. Used under license.