

\$369,999 - 601 Kennedy Place, Hanna

MLS® #A2244831

\$369,999

5 Bedroom, 3.00 Bathroom, 4,063 sqft

Residential on 0.22 Acres

NONE, Hanna, Alberta

Large 6-bedroom home with open floor plan, located right next to a school. Features include formal dining, main floor laundry, wet bar, 2 fireplaces plus a wood-burning stove, and RV parking.

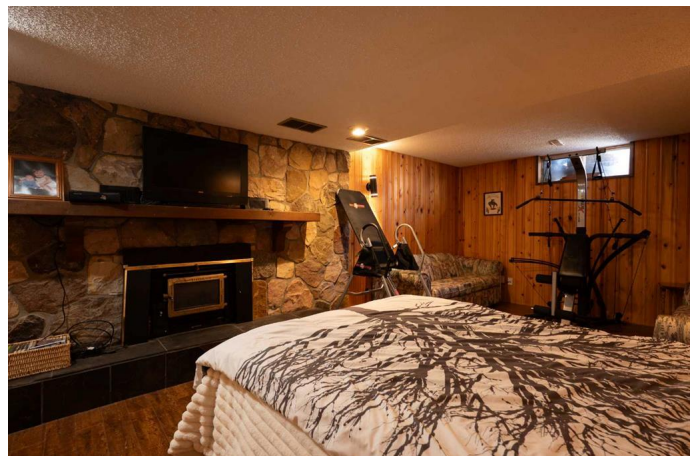
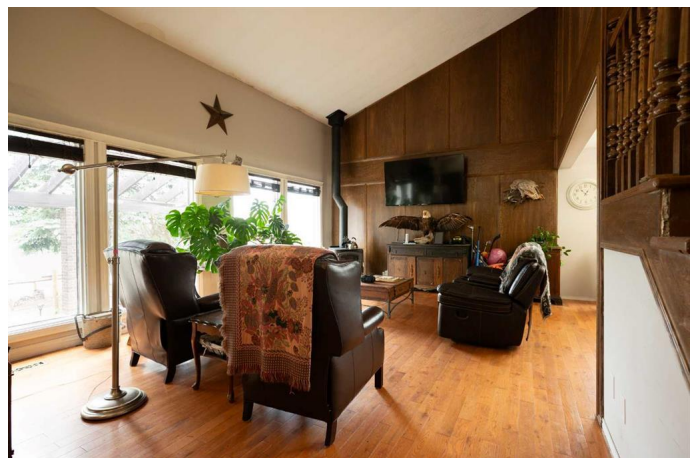
Built in 1978

Essential Information

MLS® #	A2244831
Price	\$369,999
Bedrooms	5
Bathrooms	3.00
Full Baths	2
Half Baths	1
Square Footage	4,063
Acres	0.22
Year Built	1978
Type	Residential
Sub-Type	Detached
Style	2 Storey
Status	Active

Community Information

Address	601 Kennedy Place
Subdivision	NONE
City	Hanna
County	Special Area 2
Province	Alberta
Postal Code	t0j 1p0



Amenities

Parking Spaces	2
Parking	Double Garage Attached
# of Garages	2

Interior

Interior Features	See Remarks
Appliances	Microwave, Refrigerator, Stove(s), Washer/Dryer, Window Coverings
Heating	Forced Air
Cooling	None
Has Basement	Yes
Basement	Finished, Full

Exterior

Exterior Features	Other
Lot Description	Back Yard, Few Trees
Roof	Shake
Construction	Stucco
Foundation	Poured Concrete

Additional Information

Date Listed	August 25th, 2025
Days on Market	5
Zoning	R1

Listing Details

Listing Office	eXp Realty
----------------	------------

Data is supplied by Pillar 9â„¢ MLS® System. Pillar 9â„¢ is the owner of the copyright in its MLS® System. Data is deemed reliable but is not guaranteed accurate by Pillar 9â„¢. The trademarks MLS®, Multiple Listing Service® and the associated logos are owned by The Canadian Real Estate Association (CREA) and identify the quality of services provided by real estate professionals who are members of CREA. Used under license.