

# \$379,900 - 117 Maple Drive, Hinton

MLS® #A2244600

**\$379,900**

4 Bedroom, 2.00 Bathroom, 1,000 sqft  
Residential on 0.15 Acres

Mountain View, Hinton, Alberta

117 Maple Drive is located in Hinton's Lower Hill area and is an ideal investment property or option for multi-family living. With separate kitchens and living spaces on both levels, it offers excellent potential for a rental setup or extended family use.

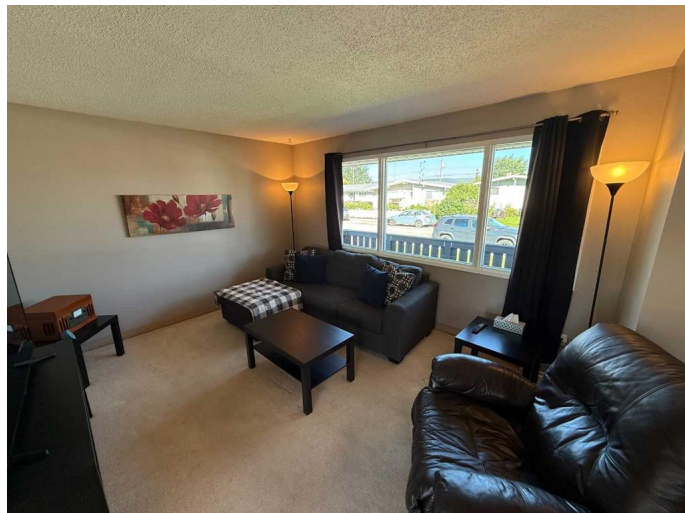
The home features a shared laundry area on the lower level and has been very well maintained throughout. The main floor includes 3 bedrooms and a full 4-piece bathroom, while the basement adds 1-bedroom with its own 3-piece bathroom.

Outside, the backyard offers plenty of space, complete with a deck and a large 24' x 24' detached garage – perfect for storage or parking.

Built in 1965

## Essential Information

MLS® #	A2244600
Price	\$379,900
Bedrooms	4
Bathrooms	2.00
Full Baths	2
Square Footage	1,000
Acres	0.15
Year Built	1965
Type	Residential



Sub-Type	Detached
Style	Bungalow
Status	Active

### Community Information

Address	117 Maple Drive
Subdivision	Mountain View
City	Hinton
County	Yellowhead County
Province	Alberta
Postal Code	t7v1n4

### Amenities

Parking Spaces	6
Parking	Double Garage Detached
# of Garages	2

### Interior

Interior Features	Pantry
Appliances	Dishwasher, Dryer, Range, Refrigerator, Washer
Heating	Forced Air, Natural Gas
Cooling	None
Has Basement	Yes
Basement	Full, Suite

### Exterior

Exterior Features	None
Lot Description	Back Lane, Back Yard, Front Yard, Lawn, Level
Roof	Asphalt Shingle
Construction	Wood Frame
Foundation	Poured Concrete

### Additional Information

Date Listed	July 30th, 2025
Days on Market	2
Zoning	R-S2

### Listing Details

Listing Office	RE/MAX 2000 REALTY
----------------	--------------------

Data is supplied by Pillar 9â„¢ MLS® System. Pillar 9â„¢ is the owner of the copyright in its MLS® System. Data is deemed reliable but is not guaranteed accurate by Pillar 9â„¢. The trademarks MLS®, Multiple Listing Service® and the associated logos are owned by The Canadian Real Estate Association (CREA) and identify the quality of services provided by real estate professionals who are members of CREA. Used under license.