

\$1,095,000 - 230 Simcoe View Sw, Calgary

MLS® #A2244504

\$1,095,000

6 Bedroom, 4.00 Bathroom, 2,829 sqft

Residential on 0.13 Acres

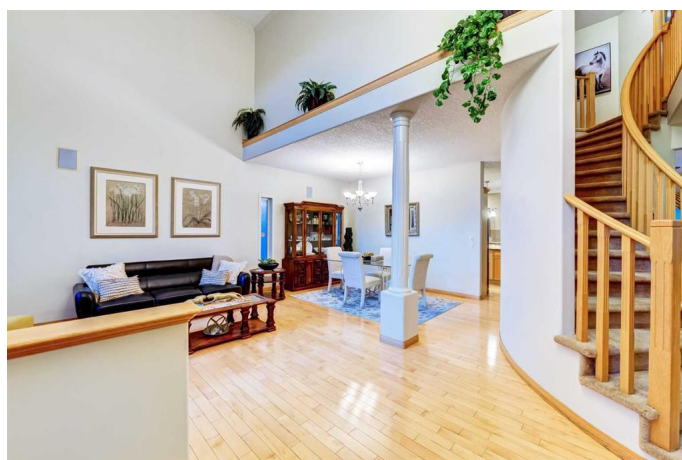
Signal Hill, Calgary, Alberta

Discover the perfect blend of elegance, space, and location in this impressive 6-bedroom home (4-up, 2-down) offering almost 4,000 sq. ft. of beautifully appointed living space. Tucked away in a prime spot backing directly onto lush green space, this home provides both privacy and a peaceful, picturesque setting. Enjoy the convenience of being within walking distance to excellent schools—including Ernest Manning High School—as well as the LRT, Westside Recreation Centre, parks, shopping, and more. Commuters will love that downtown Calgary is just 15 minutes away. Inside, you'll find quality craftsmanship throughout: soaring 9-foot knockdown ceilings, rich granite counters, stainless steel appliances, gleaming hardwood floors, stylish built-ins, rounded drywall corners, and elegant curved staircases. The thoughtful floor plan offers extra-large rooms throughout, giving you and your family all the space you need to live and entertain in comfort. Incredible value for a home of this size and calibre.

Built in 2001

Essential Information

MLS® #	A2244504
Price	\$1,095,000
Bedrooms	6
Bathrooms	4.00
Full Baths	3



Half Baths	1
Square Footage	2,829
Acres	0.13
Year Built	2001
Type	Residential
Sub-Type	Detached
Style	2 Storey
Status	Active

Community Information

Address	230 Simcoe View Sw
Subdivision	Signal Hill
City	Calgary
County	Calgary
Province	Alberta
Postal Code	T3H 4N4

Amenities

Parking Spaces	4
Parking	Double Garage Attached
# of Garages	2

Interior

Interior Features	Granite Counters, High Ceilings, Kitchen Island, Pantry, See Remarks, Soaking Tub, Walk-In Closet(s)
Appliances	Dishwasher, Dryer, Electric Stove, Refrigerator, Washer, Window Coverings
Heating	Forced Air
Cooling	Central Air
Fireplace	Yes
# of Fireplaces	1
Fireplaces	Gas
Has Basement	Yes
Basement	Finished, Full

Exterior

Exterior Features	Private Yard
Lot Description	Back Lane, Garden, See Remarks
Roof	Asphalt Shingle

Construction	Stone, Stucco, Wood Frame
Foundation	Poured Concrete

Additional Information

Date Listed	August 8th, 2025
Zoning	R-CG

Listing Details

Listing Office	RE/MAX Realty Professionals
----------------	-----------------------------

Data is supplied by Pillar 9â„¢ MLS® System. Pillar 9â„¢ is the owner of the copyright in its MLS® System. Data is deemed reliable but is not guaranteed accurate by Pillar 9â„¢. The trademarks MLS®, Multiple Listing Service® and the associated logos are owned by The Canadian Real Estate Association (CREA) and identify the quality of services provided by real estate professionals who are members of CREA. Used under license.