

\$709,900 - 135 Legacy Reach Manor Se, Calgary

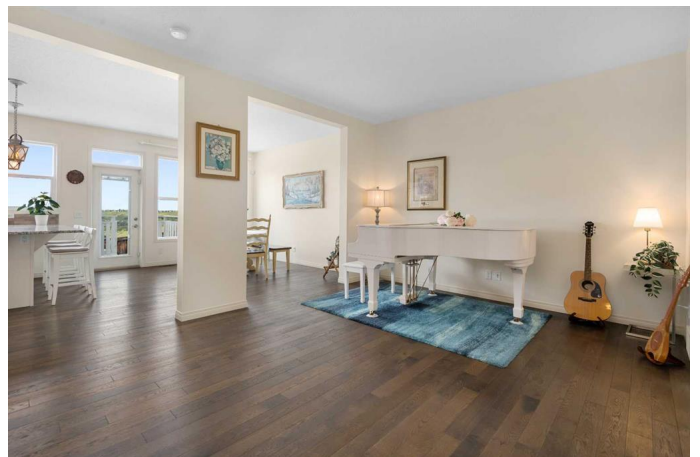
MLS® #A2243030

\$709,900

3 Bedroom, 3.00 Bathroom, 1,977 sqft
Residential on 0.09 Acres

Legacy, Calgary, Alberta

This exceptional 2-storey detached home, featuring nearly 3000 SF living space in the desirable community of Legacy is calling you. This home offers an one of kind ridge view on 2 levels. Upon entering, you are greeted by an inviting and bright design, showcasing one of the highlights of this home: a spacious hub of family gathering & entertainment, the upgraded kitchen, indoor & Out door dinning area and the living room blended in effortless. Upstairs feature Spacious Master bedroom with 5 piece ensuite and a deep walk-in closet, Huge bonus room, 2 more bright & airy bedrooms , 4 piece bathroom and laundry room. The view from Master Bedroom will keep entertain all year round. The basement is perfect place for home gym and with 3 piece rough-in plumbing, it is very convenient, if any further development is needed. Another highlight of this home is a spacious driveway for multiple vehicles. With a fenced yard, a trampoline and a rear deck, it is perfect for private down time. Located on a quiet street and just steps from the ridge and community walking paths, this home evokes a calming and tranquil atmosphere. Legacy is known for its array of amenities, including scenic walking paths, ponds, schools, shopping centers, restaurants, and playgrounds. Its prime location provides an easy access to Macleod Trail, Deerfoot Trail, and Stoney Trail, make your daily commute a breeze. Legacy also features recreational amenities, parks, soccer fields, and over 300 acres of protected



environmental reserve. Call your favorite realtor and make this home yours today!

Built in 2015

Essential Information

MLS® #	A2243030
Price	\$709,900
Bedrooms	3
Bathrooms	3.00
Full Baths	2
Half Baths	1
Square Footage	1,977
Acres	0.09
Year Built	2015
Type	Residential
Sub-Type	Detached
Style	2 Storey
Status	Active

Community Information

Address	135 Legacy Reach Manor Se
Subdivision	Legacy
City	Calgary
County	Calgary
Province	Alberta
Postal Code	T2X 2C5

Amenities

Amenities	None
Parking Spaces	5
Parking	Double Garage Attached
# of Garages	2

Interior

Interior Features	No Animal Home, No Smoking Home, See Remarks
Appliances	Dishwasher, Electric Stove, Garage Control(s), Microwave Hood Fan, Refrigerator, Washer/Dryer
Heating	Forced Air

Cooling	Other
Has Basement	Yes
Basement	Full, Unfinished

Exterior

Exterior Features	Balcony
Lot Description	Backs on to Park/Green Space, No Neighbours Behind, Pie Shaped Lot
Roof	Asphalt Shingle
Construction	Mixed
Foundation	Poured Concrete

Additional Information

Date Listed	July 25th, 2025
Days on Market	46
Zoning	R-G
HOA Fees	65
HOA Fees Freq.	ANN

Listing Details

Listing Office	CIR Realty
----------------	------------

Data is supplied by Pillar 9â„¢ MLS® System. Pillar 9â„¢ is the owner of the copyright in its MLS® System. Data is deemed reliable but is not guaranteed accurate by Pillar 9â„¢. The trademarks MLS®, Multiple Listing Service® and the associated logos are owned by The Canadian Real Estate Association (CREA) and identify the quality of services provided by real estate professionals who are members of CREA. Used under license.