

# \$699,900 - Twp Rd 342, Rural Mountain View County

MLS® #A2242812

**\$699,900**

0 Bedroom, 0.00 Bathroom,  
Land on 80.00 Acres

NONE, Rural Mountain View County, Alberta

Land like this only comes along once in a lifetime and NOW is the time! This incredible 80 acre piece of paradise has everything the discerning buyer could ever want from beautiful meadows to awesome tall stands of timber and the best part....you have 1/8 of a mile of James River frontage for your fishing pleasure. So...bring the kids, the dogs, the horses, or whatever critters you may have and c'mon down before it's too late. Oh, and don't forget the fishing pole!

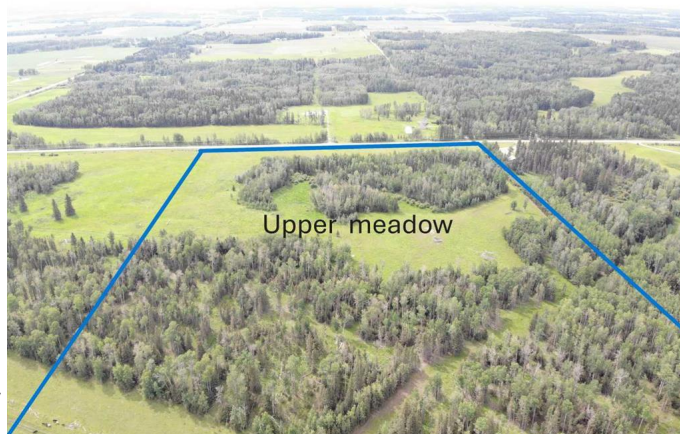
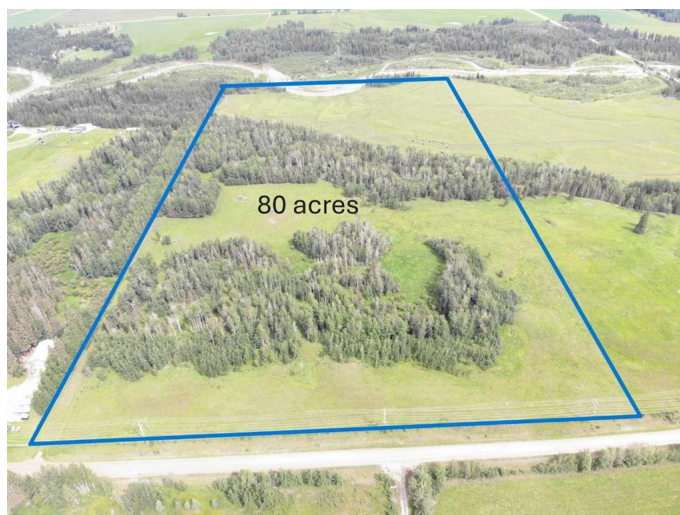
## Essential Information

MLS® #	A2242812
Price	\$699,900
Bathrooms	0.00
Acres	80.00
Type	Land
Sub-Type	Residential Land
Status	Active

## Community Information

Address	Twp Rd 342
Subdivision	NONE
City	Rural Mountain View County
County	Mountain View County
Province	Alberta
Postal Code	T0M1X0

## Additional Information



Date Listed July 24th, 2025

Days on Market 100

Zoning AG 1

### **Listing Details**

Listing Office CIR Realty

Data is supplied by Pillar 9â,,ç MLSÂ® System. Pillar 9â,,ç is the owner of the copyright in its MLSÂ® System. Data is deemed reliable but is not guaranteed accurate by Pillar 9â,,ç. The trademarks MLSÂ®, Multiple Listing ServiceÂ® and the associated logos are owned by The Canadian Real Estate Association (CREA) and identify the quality of services provided by real estate professionals who are members of CREA. Used under license.