

\$819,000 - 239 18 Avenue Ne, Calgary

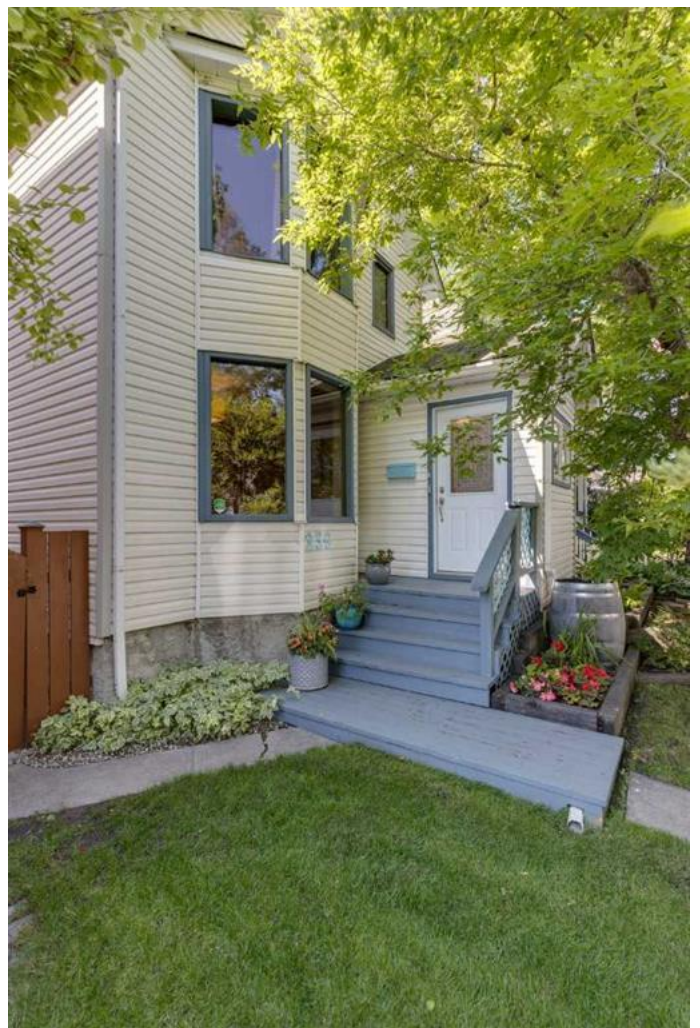
MLS® #A2242425

\$819,000

3 Bedroom, 2.00 Bathroom, 1,243 sqft
Residential on 0.07 Acres

Tuxedo Park, Calgary, Alberta

OPEN HOUSE SATURDAY, AUGUST 9TH FROM 1PM TO 4PM. Welcome to this charming 2 story home in Tuxedo Park. Experience timeless charm seamlessly blended with modern updates in this beautiful family home, nestled in one of Calgary's sought after neighborhoods. This beautifully updated home is situated in a very desirable, walk friendly community close to schools, parks, shopping (Safeway and Co-Op) restaurants and play grounds, making it a very attractive place to call home. This thoughtfully updated home will appeal to buyers looking for urban convenience with classic charm. Features include updated kitchen and baths, spacious living area with wood burning fire place, this home offers the perfect combination of character, comfort, and convenience. This inviting home is full of charm- from the crown moldings and vintage style faucets and wood burning fireplace in the living room to enjoy cozy evenings in winter. The bright renovated kitchen overlooks the sunny south facing backyard which boasts a great size deck for entertaining. The eating area, with a door that opens to a cozy outdoor patio where you can enjoy your morning coffee. Retire upstairs where you will find a spacious primary bedroom with a large bay window. Two additional bedrooms and 4-pc bathroom round out the upper level. The basement is developed with a spacious recreational or movie area, laundry room, 3-pc bathroom and cold storage area. Enjoy the convenience of a



spacious double detached heated garage -perfect for a workshop, extra storage and keeping your vehicle warm during winter. This beautiful family home offers unbeatable value and style. Features include clawfoot tub, vintage style hardware, and hardwood flooring throughout both the main and upper levels. Outside, enjoy a private backyard with large deck. Recent upgrades include: Kitchen breakfast nook reno (2023), hot water tank (2019), new roof (2020), AC installation (2023), basement flooring (2021), attic insulation (2018) and basement bathroom renovations(2018). This home is move-in ready and waiting for the next family to enjoy everything that this inner-city neighborhood has to offer. This is your chance to own a truly special inner-city treasure offering total of 1821.60 SQFT living space with basement. Book a showing with your favorite realtor today. The listing agent is related to the seller.

Built in 1913

Essential Information

MLS® #	A2242425
Price	\$819,000
Bedrooms	3
Bathrooms	2.00
Full Baths	2
Square Footage	1,243
Acres	0.07
Year Built	1913
Type	Residential
Sub-Type	Detached
Style	2 Storey
Status	Active

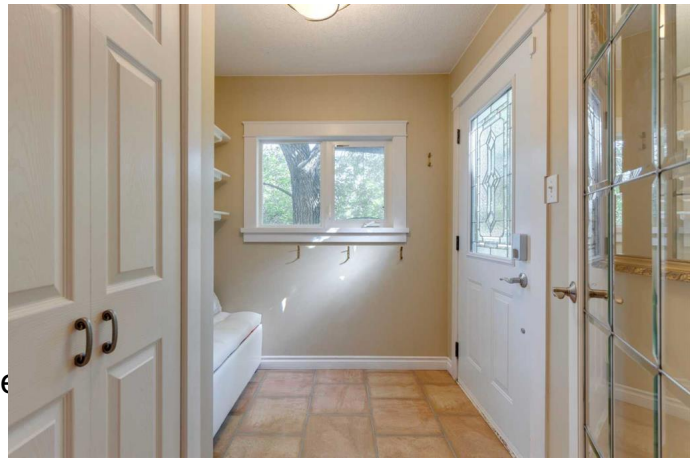
Community Information

Address	239 18 Avenue Ne
Subdivision	Tuxedo Park

City Calgary
County Calgary
Province Alberta
Postal Code T2E1N3

Amenities

Parking Spaces 2
Parking Double Garage Detached, Heated
of Garages 2



Interior

Interior Features No Animal Home, No Smoking Home, See Remarks
Appliances Central Air Conditioner, Dishwasher, Dryer, Oven, Range Hood, Refrigerator, Washer/Dryer, Window Coverings, Induction Cooktop
Heating Fireplace(s), Forced Air
Cooling Central Air
Fireplace Yes
of Fireplaces 1
Fireplaces Living Room, Mantle, Wood Burning
Has Basement Yes
Basement Finished, Full

Exterior

Exterior Features Private Yard
Lot Description Back Lane, Other
Roof Asphalt Shingle
Construction Vinyl Siding, Wood Frame
Foundation Poured Concrete

Additional Information

Date Listed August 7th, 2025
Days on Market 1
Zoning R-CG

Listing Details

Listing Office Real Estate Professionals Inc.

Data is supplied by Pillar 9â„¢ MLSÂ® System. Pillar 9â„¢ is the owner of the copyright in its MLSÂ® System. Data is deemed reliable but is not guaranteed accurate by Pillar 9â„¢. The trademarks MLSÂ®, Multiple Listing ServiceÂ® and the associated logos are owned by The Canadian Real Estate Association (CREA) and identify the quality of services provided by real estate professionals who are members of CREA. Used under license.