

\$439,900 - 23 Mountview Place, Granum

MLS® #A2241243

\$439,900

5 Bedroom, 3.00 Bathroom, 1,613 sqft

Residential on 0.37 Acres

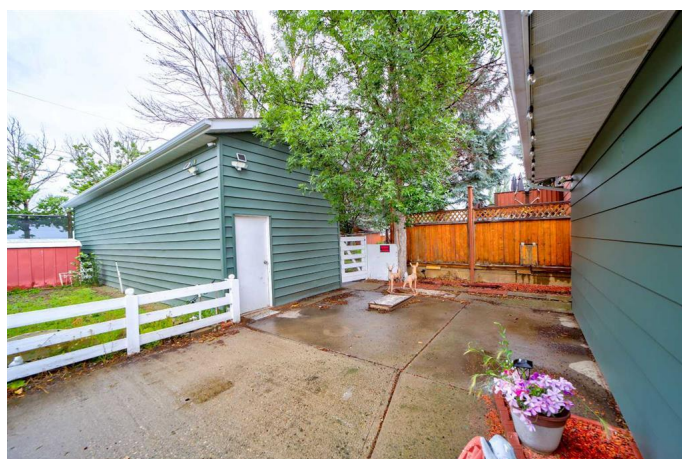
NONE, Granum, Alberta

Spacious Home in Prime Location – Perfect for Families & Entertaining! Located directly across from a beautiful park with mature trees and a serene pond, this home offers a peaceful setting with incredible convenience. Just minutes from a K-9 school and a Par 3 golf course, it's ideal for families and outdoor enthusiasts alike. This generously sized property features: Ample Parking & Storage: 3-car garage in the front and an additional 2-car garage in the backyard. Entertainer's Dream: Full kitchens on both the main level and basement – perfect for hosting guests or accommodating extended family. Open & Versatile Layout: Plenty of space throughout the home to fit your lifestyle.

Built in 1988

Essential Information

MLS® #	A2241243
Price	\$439,900
Bedrooms	5
Bathrooms	3.00
Full Baths	2
Half Baths	1
Square Footage	1,613
Acres	0.37
Year Built	1988
Type	Residential
Sub-Type	Detached



Style	Bi-Level
Status	Active

Community Information

Address	23 Mountview Place
Subdivision	NONE
City	Granum
County	Willow Creek No. 26, M.D. of
Province	Alberta
Postal Code	T0L 1A0

Amenities

Parking Spaces	10
Parking	Concrete Driveway, Double Garage Detached, Triple Garage Attached
# of Garages	5

Interior

Interior Features	Pantry, Walk-In Closet(s)
Appliances	Central Air Conditioner, Dishwasher, Dryer, Electric Cooktop, Electric Stove, Freezer, Garage Control(s), Microwave, Range Hood, Refrigerator, Washer, Window Coverings, Built-In Refrigerator, Oven-Built-In
Heating	Boiler, Natural Gas
Cooling	Central Air
Fireplace	Yes
# of Fireplaces	2
Fireplaces	Wood Burning
Has Basement	Yes
Basement	Exterior Entry, Finished, Full, Suite, Walk-Up To Grade

Exterior

Exterior Features	Balcony, Courtyard, Private Yard, Storage
Lot Description	Back Lane, Back Yard, Backs on to Park/Green Space, Corner Lot, Cul-De-Sac, Front Yard, Landscaped, Level, Private, Close to Clubhouse, Creek/River/Stream/Pond
Roof	Asphalt Shingle
Construction	Wood Frame, Composite Siding
Foundation	Poured Concrete

Additional Information

Date Listed	July 18th, 2025
Days on Market	53
Zoning	res

Listing Details

Listing Office	eXp Realty of Canada
----------------	----------------------

Data is supplied by Pillar 9â„¢ MLSÂ® System. Pillar 9â„¢ is the owner of the copyright in its MLSÂ® System. Data is deemed reliable but is not guaranteed accurate by Pillar 9â„¢. The trademarks MLSÂ®, Multiple Listing ServiceÂ® and the associated logos are owned by The Canadian Real Estate Association (CREA) and identify the quality of services provided by real estate professionals who are members of CREA. Used under license.