

# \$79,000 - 6 Susquehanna Avenue, Rural Cardston County

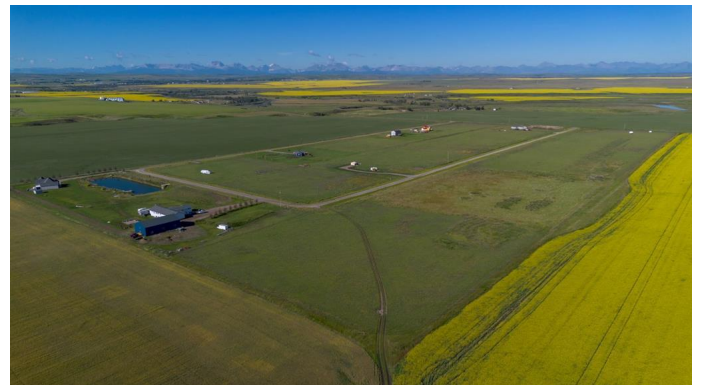
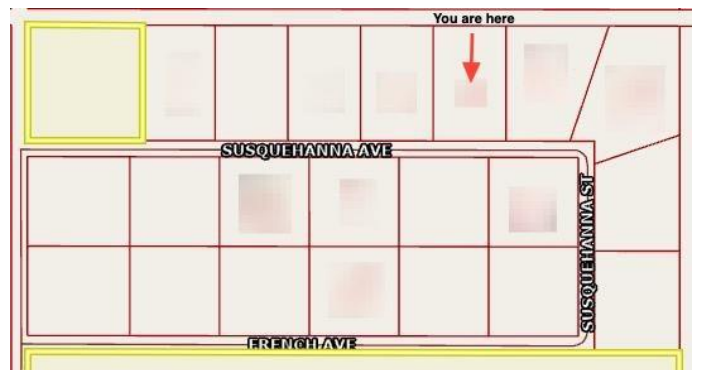
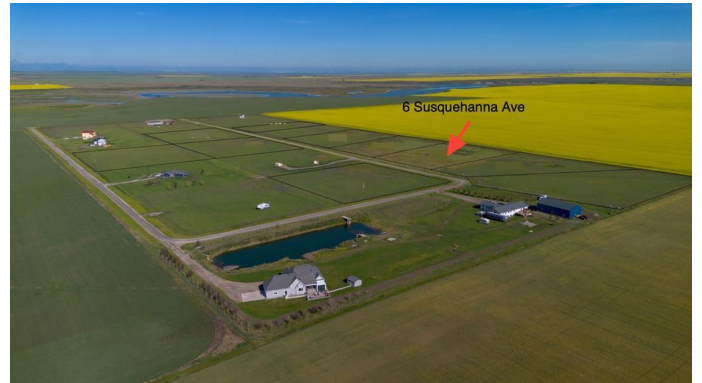
MLS® #A2240217

**\$79,000**

0 Bedroom, 0.00 Bathroom,  
Land on 3.24 Acres

NONE, Rural Cardston County, Alberta

Smaller Footprint, Big Alberta Feel! This charming 3.17 acre lot proves that you don't need a huge piece of land to have big potential. Slightly narrower than neighbouring parcels, this lot is still perfectly suited for a cozy homestead, retirement bungalow, or even a charming short-term rental that offers a slice of paradise. Set in a growing rural subdivision just 5 minutes from Cardston, this property enjoys the same breathtaking mountain views, star-filled skies, and country calm. Power and gas are nearby, and water access is flexible. With outdoor attractions like Waterton Lakes National Park and St. Mary's Reservoir nearby, guests and residents alike will love the natural beauty and simple pleasures this area offers. Call your favourite REALTOR® for more info today!



## Essential Information

MLS® #	A2240217
Price	\$79,000
Bathrooms	0.00
Acres	3.24
Type	Land
Sub-Type	Residential Land
Status	Active

## Community Information

Address	6 Susquehanna Avenue
Subdivision	NONE
City	Rural Cardston County
County	Cardston County
Province	Alberta
Postal Code	T0K 0K0

### **Additional Information**

Date Listed	July 14th, 2025
Days on Market	61
Zoning	GCR

### **Listing Details**

Listing Office	Grassroots Realty Group
----------------	-------------------------

Data is supplied by Pillar 9â„¸ MLSÂ® System. Pillar 9â„¸ is the owner of the copyright in its MLSÂ® System. Data is deemed reliable but is not guaranteed accurate by Pillar 9â„¸. The trademarks MLSÂ®, Multiple Listing ServiceÂ® and the associated logos are owned by The Canadian Real Estate Association (CREA) and identify the quality of services provided by real estate professionals who are members of CREA. Used under license.