

\$1,325,000 - 700 West Chestermere Drive, Chestermere

MLS® #A2240151

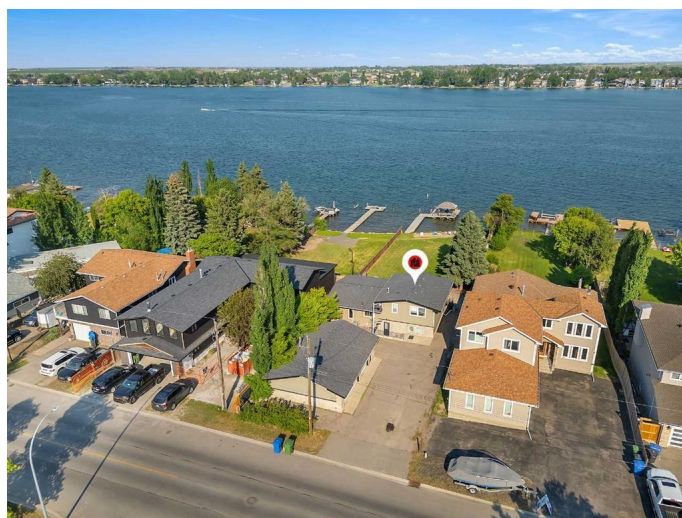
\$1,325,000

4 Bedroom, 3.00 Bathroom, 1,892 sqft

Residential on 0.41 Acres

The Beaches, Chestermere, Alberta

LAKEFRONT LUXURIOUS PROPERTY!! OVER 18,000 SQ FT LOT (60 FT X 301 FT) WITH PRIVATE DOCK!! 4 BEDROOMS & 3 BATHROOMS!! DOUBLE-TIER DECK WITH HOT TUB, FIREPIT, AND OUTDOOR LOUNGE!! 2450+ SQ FT OF LIVING SPACE ON A UNIQUE 4-LEVEL SPLIT DESIGN!! This stunning lakefront home is more than just a property â€” itâ€™s a lifestyle. Perfectly positioned on a sprawling 0.41 ACRE LOT, this residence offers the rare combination of architectural charm and resort-style outdoor living. Step inside to a BRIGHT, SPACIOUS MAIN LEVEL with a cozy living room, fireplace, wet bar and walk-out access to the backyard â€” perfect for hosting and relaxing. Upstairs, the beautifully finished kitchen flows into an ELEGANT DINING AREA and stylish family room with direct access to the upper deck. The next level features three bedrooms including a PRIMARY RETREAT WITH 5PC ENSUITE, while a full 4pc bathroom serves the additional bedrooms. And just when you think you've seen it all â€” it keeps getting better. The FINISHED BASEMENT adds even more space with a fourth bedroom, WALK-IN CLOSET, large rec area, and laundry room. And the BACKYARD? ITâ€™S ON A WHOLE DIFFERENT LEVEL. Designed to impress with a DOUBLE-TIER DECK, BUILT-IN LIGHTING, a SPA-STYLE HOT TUB, FIREPIT, oversized CHESSBOARD PATIO, MINI GOLF, and your own PRIVATE DOCK WITH GAZEBO â€” this space truly turns heads. This isnâ€™t just a



backyard – it’s where summer parties turn legendary, and lazy Sundays feel like you booked a private resort. Walk to the NEARBY SCHOOL, PARKS, OR GOLF COURSE, or simply stay home and live like you're on vacation every day. ALL FURNITURE IS INCLUDED – just move in and enjoy!! THIS ISN’T JUST A HOME – THIS IS A MOMENT, A FEELING, A DESTINATION. COME SEE IT TO BELIEVE IT.

Built in 1987

Essential Information

| | |
|----------------|---------------|
| MLS® # | A2240151 |
| Price | \$1,325,000 |
| Bedrooms | 4 |
| Bathrooms | 3.00 |
| Full Baths | 3 |
| Square Footage | 1,892 |
| Acres | 0.41 |
| Year Built | 1987 |
| Type | Residential |
| Sub-Type | Detached |
| Style | 4 Level Split |
| Status | Active |

Community Information

| | |
|-------------|----------------------------|
| Address | 700 West Chestermere Drive |
| Subdivision | The Beaches |
| City | Chestermere |
| County | Chestermere |
| Province | Alberta |
| Postal Code | T1X 1B5 |

Amenities

| | |
|----------------|--|
| Parking Spaces | 7 |
| Parking | Oversized, Triple Garage Detached, Heated Driveway |
| # of Garages | 3 |

| | |
|---------------|---|
| Is Waterfront | Yes |
| Waterfront | Lake Front, Waterfront, Lake, See Remarks |

Interior

| | |
|-------------------|---|
| Interior Features | Bar, Double Vanity |
| Appliances | Bar Fridge, Dishwasher, Dryer, Electric Range, Microwave Hood Fan, Refrigerator, Washer |
| Heating | Forced Air, Natural Gas |
| Cooling | None |
| Fireplace | Yes |
| # of Fireplaces | 1 |
| Fireplaces | Gas |
| Has Basement | Yes |
| Basement | Finished, Full |

Exterior

| | |
|-------------------|-----------------------------------|
| Exterior Features | Dock, Private Entrance, Boat Slip |
| Lot Description | Back Yard, Lake, Waterfront |
| Roof | Asphalt Shingle |
| Construction | Brick, Vinyl Siding, Wood Frame |
| Foundation | Poured Concrete |

Additional Information

| | |
|----------------|-----------------|
| Date Listed | July 15th, 2025 |
| Days on Market | 61 |
| Zoning | RL |

Listing Details

| | |
|----------------|-------------|
| Listing Office | Real Broker |
|----------------|-------------|

Data is supplied by Pillar 9â„¢ MLSÂ® System. Pillar 9â„¢ is the owner of the copyright in its MLSÂ® System. Data is deemed reliable but is not guaranteed accurate by Pillar 9â„¢. The trademarks MLSÂ®, Multiple Listing ServiceÂ® and the associated logos are owned by The Canadian Real Estate Association (CREA) and identify the quality of services provided by real estate professionals who are members of CREA. Used under license.